



Sold

UNIQUE TERRACE HOUSE – SIMPLY STUNNING

3 BED | 2 BATH | 1 CAR

18 Riley Street, Nirimba, QLD, 4551

Presented as brand new and imbued with an inviting ambience, this dual level townhouse opposite parkland, makes an impressive statement in subtle luxury and unique style. Its design brilliance lies in the home's very human composition.

Its considered layout is ideal for live-in extended family members, teenagers, out-of-town house guests or adult children reluctant to leave home. The lower level offers the versatility of fully self-contained living, with its own kitchenette, bathroom, separate toilet, two built-in bedrooms and a living area.

Meanwhile, the upper elevation boasts an air-conditioned, open-plan living/dining and kitchen area opening onto a huge, tiled entertaining terrace perfect for alfresco dining, lounging or barbecues with family and friends.

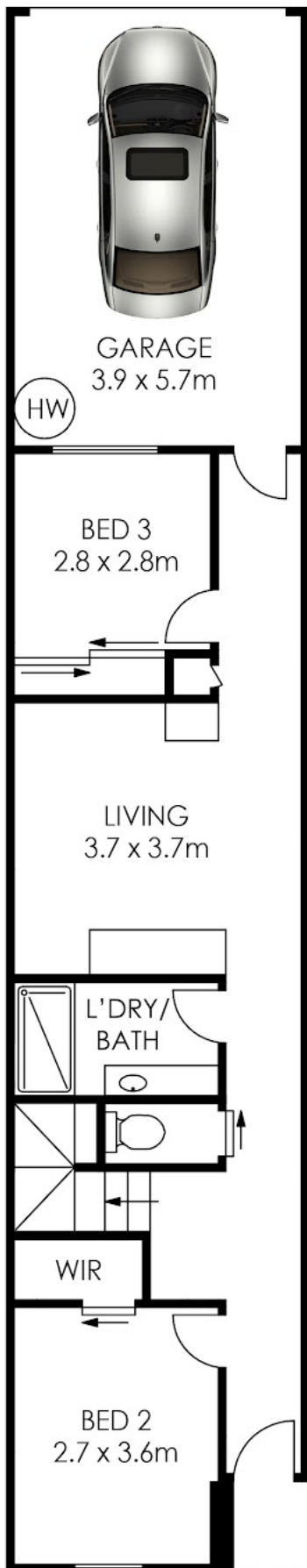
The stylish gourmet kitchen is accentuated by a dramatic black tiled backsplash that adds a layer of sophistication. Other features include stone bench tops, Euromaid stove, generous pantry and a centre

PRICE:
\$641,500

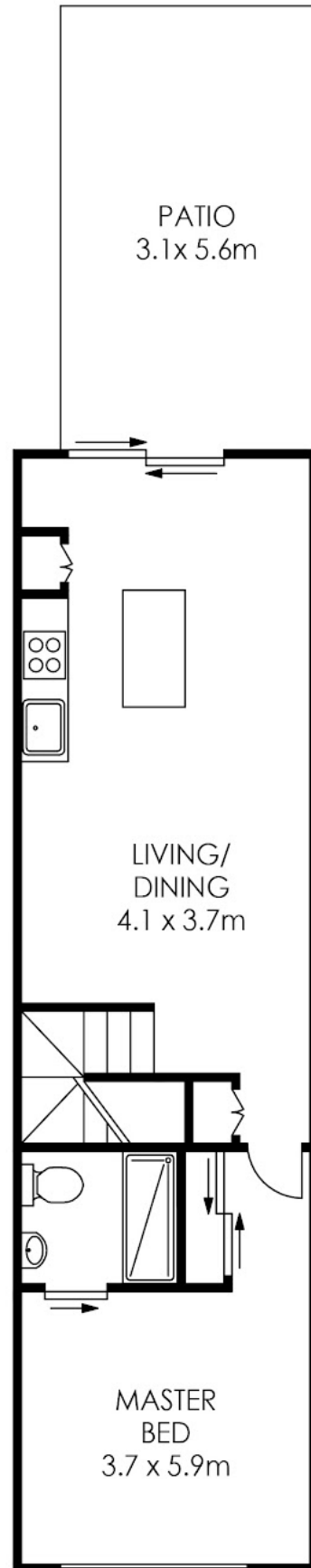
OPEN FOR INSPECTION:
N/A



Greg Pratt
0413 624 308
greg@coastaledgerealestate.com.au



LOWER LEVEL



UPPER LEVEL

