

55 AMSTERDAM CRESCENT, SALISBURY DOWNS, SA, 5108



SOLD

REFURBISHED FAMILY HOME ON CORNER BLOCK

Comprising

This home has been recently refurbished and boasts new carpet to bedrooms, new flooring to living areas, new soft furnishings, light fittings and freshly painted throughout.

The home comprises

3 bedrooms, main with built in robes, bedroom 3 with BIR

Spacious living area

Good size kitchen

Bathroom with toilet plus a 2nd separate WC

Ducted cooling and gas heating

Undercover entertaining area

tool shed

Huge carport with side access

Fully fenced rear yard

Land size 637sqm approx

Conveniently located close to local schools, public transport and handy to all amenities

RLA 269823

3 BED | 1 BATH | 4 CAR

PRICE:

\$410,000

OPEN FOR INSPECTION:

N/A



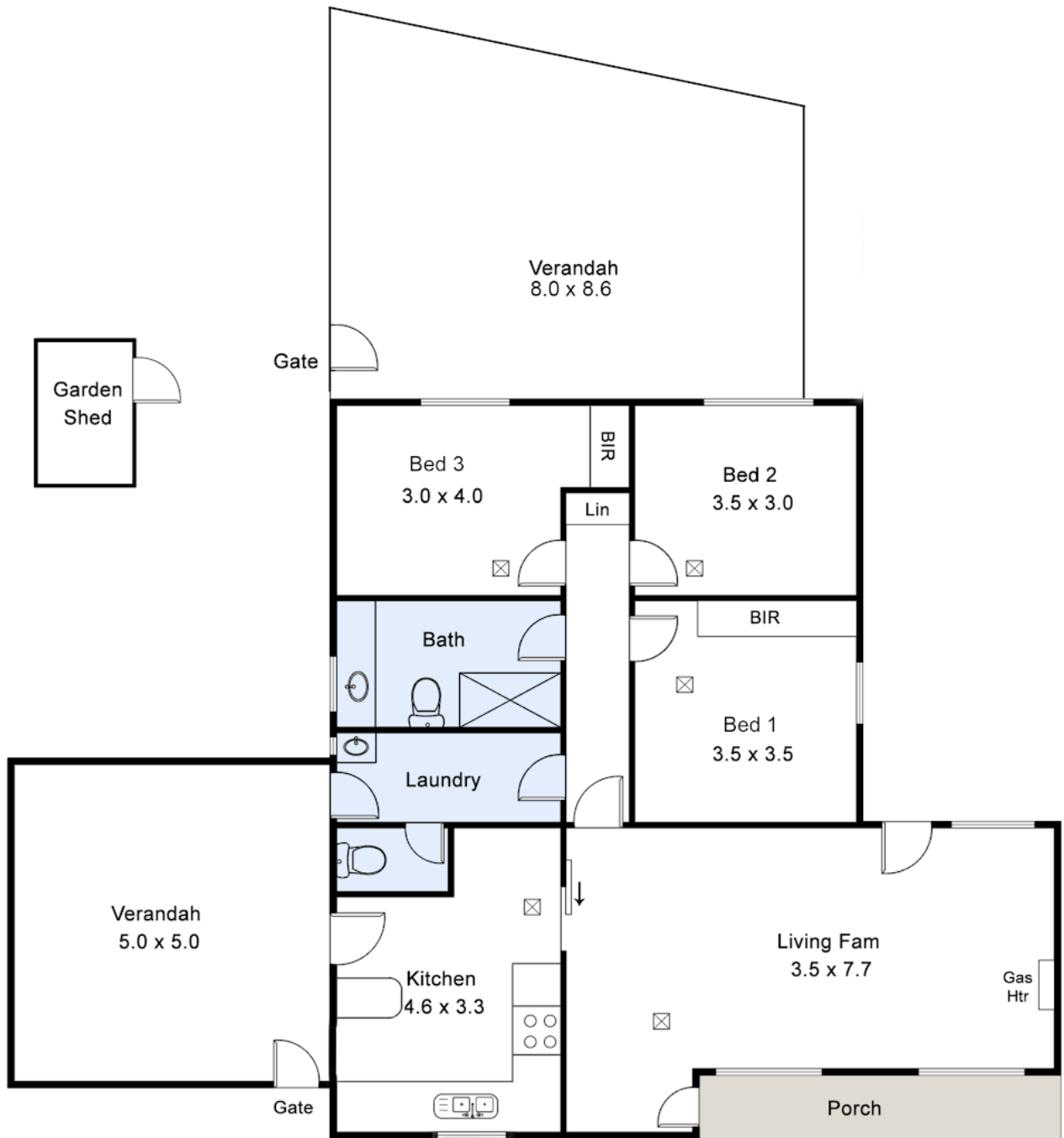
Andrew Giles

0414696936

gilesproperty@atrealty.com.au

www.atrealty.com.au

RLA: 269823



Disclaimer: Please note this floor plan is for marketing purposes and is to be used as a guide only. All dimensions are estimates only and may not be exact measurements.

This drawing is for illustration purposes only.
 All measurements are approximate and details intended to be relied upon should be independently verified.
 Measured & drawn by Leading Lines Photography