



**SOLD**

## SPECTACULAR VIEWS - SPACIOUS LIVING!

This quality designed modern home, located in the highly desirable suburb of Tranmere, is perfectly positioned to capture stunning panoramic views of the River Derwent and Mount Wellington/Kunanyi.

Set over two levels and constructed in 2013, this quality home offers open plan kitchen/living/dining, 5 bedrooms, 3 bathrooms, home office, workshop/studio and double garage - one of the bedrooms is of such good proportions it could also be utilised as a 2nd living room - such is the flexibility of the floor plan, making it the perfect layout for family living or for those just requiring extra space.

Cleverly designed, ensuring the amazing views are enjoyed from the majority of rooms.....this home is definitely sure to impress!

### ENTRY LEVEL:

- Internal access from double garage.
- Spacious open plan kitchen, dining and living room.
- Access from dining area to the balcony.
- Large kitchen complete with a huge walk-in-pantry, Fisher & Paykel 2 drawer dishwasher, quality AEG oven, cooktop and rangehood.
- Master bedroom has a good sized walk-in-robe and spacious Ensuite with walk-in-shower and spa bath.
- 2 Bedrooms, with built-in-ropes.
- Good sized family bathroom, with shower and bath.
- Large linen closet.
- Daikin Reverse Cycle Heat pump.

### LOWER LEVEL:

- 2 Bedrooms both with built-in-ropes.
- The larger of the 2 bedrooms complete with Daikin reverse cycle heat pump could be utilised as second living area.
- Bathroom with walk-in - shower.
- Spacious Home Office.
- Large workshop or studio space with external access.

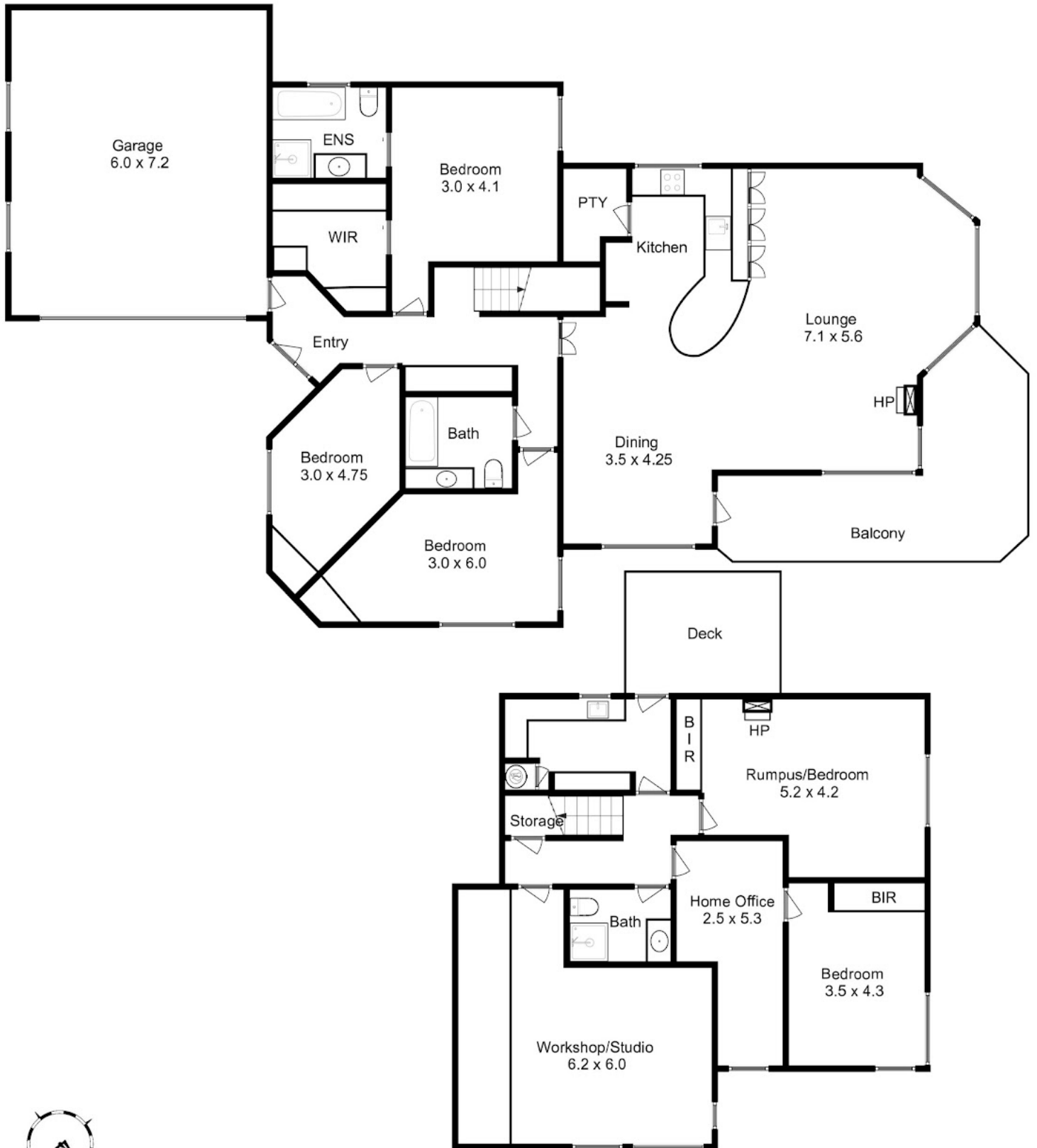
**5 BED | 3 BATH | 2 CAR**

**PRICE:**  
\$1,367,770

**OPEN FOR INSPECTION:**  
N/A



**Steve Fulton**  
**0419724009**  
stevef@atrealty.com.au  
[www.atrealty.com.au](http://www.atrealty.com.au)



Approximate Living Area: 244 Sqm  
 Approximate Sundeck Area: 13 Sqm

Disclaimer: Please note this floor plan is for marketing purposes and is to be used as a guide only. All dimensions are estimates only and may not be exact measurements.

purposes and is to be used as a guide.  
 Produced by Promote Property Marketing

Steve Fulton  
 0419724009  
 stevef@atrealty.com.au  
 www.atrealty.com.au

