

**SOLD**

**FOUR BEDROOM, 2.5 BATHROOMS X 2 LOCK UP GARAGE AS NEW TOWNHOUSE - BE QUICK OR MISS OUT!**

Property Description: Modern Two Storey Townhouse, for easy living lifestyle.

- \* Completed in July 2019 by the Heron Group with Builder Warranty in place.
- \* Rhodes Park complex is Pet Friendly with Moderate Fees \$55 p.w.
- \* Minutes walk to bus hub and Capalaba Park and Central
- \* Living space of 185.3 m2 over two levels on 179m2 of land.
- \* Resort Style Pool and Barbeque Facilities \* Visitor Parking
- \* Air Con. Open plan living areas with Ceiling Fans, downlights
- \* Galley Kitchen Stone Benchtops, dishwasher, Induction Cooktop
- \* Four Bedrooms, master with ensuite and walk in robe.
- \* Ceiling Fans and R/C air con. in three bedrooms. Mirrored Robes
- \* One bedroom has a north facing balcony with wide views to the north, east and west.
- \* Family Bathroom has luxe deep bath, separate Shower and toilet.
- \* Double remote lock up garage \* Laundry & Downstairs toilet \* Ceiling Fans
- \* Private North facing courtyard & Patio \* Contact Agent to arrange an inspection

**4 BED | 3 BATH | 2 CAR**

**PRICE:**  
\$660,000

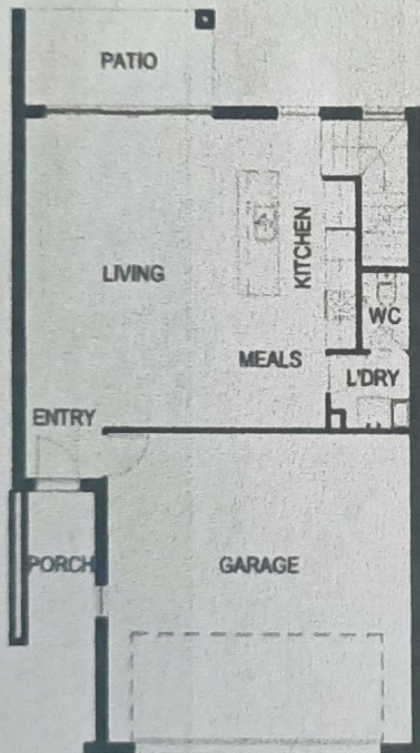
**OPEN FOR INSPECTION:**  
N/A



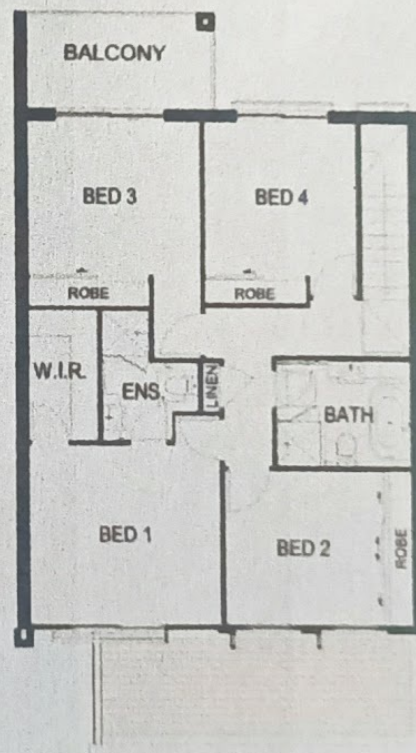
**Jen Smith**  
**0468470875**  
jen@atrealty.com.au  
[www.atrealty.com.au](http://www.atrealty.com.au)



<b>LIVING AREAS:</b>	
GROUND FLOOR:	50.5m <sup>2</sup>
FIRST FLOOR:	77.6m <sup>2</sup>
GARAGE:	38.4m <sup>2</sup>
PORCH:	4.4m <sup>2</sup>
PATIO:	7.2m <sup>2</sup>
BALCONY:	7.2m <sup>2</sup>
TOTAL LIVING:	185.3m <sup>2</sup>



**GROUND FLOOR PLAN**



**FIRST FLOOR PLAN**

*This is an indicative representation. actual colours, facade and floor plans may differ or be the reverse from shown. End units may have additional windows.*

Disclaimer: Please note this floor plan is for marketing purposes and is to be used as a guide only. All dimensions are estimates only and may not be exact measurements.