



SOLD

HAMPTON INSPIRED

Nestled in a quiet corner of popular Tamborine, you will find this three and a half useable acres on which sits a large Hampton inspired steel frame home. Totally renovated throughout featuring a huge kitchen and spacious modern Bathrooms- surely to please the lady, and man, of the house. A 12 x 9 Titan Shed, with a storage mezzanine- great for the boys toys or tradie that works from home. The rear 2 acres is horse fenced, making it ideal for 1 or 2 horses, and an in ground pool for the kids. So live the country life in style; sit in the rear alfresco and watch the kids in the pool and the horses graze....but you will need to be quick

5 Large Beds plus office or 6th Bedroom
Very Roomy Master with large fitted our walk in robe and
stunning Ensuite with twin sinks, stone benchtop and Barn door
Steel Frame with 3 Phase power
Hampton inspired Gourmet kitchen-Gas 900mm Stove-Stone Benches-Integrated twin fridges
and dishwasher.
Installed Microwave
Titan 12 x 9 powered Shed with mezzanine
Modern renovated bathroom with bath and Barn Door
Vanities are separate to bathroom with twin sinks and stone benchtops
Ducted 3 Phase Air Conditioning and fans through out
Plantation Blinds in the living areas.
98,000 Liter in ground concrete water tank
2 separate Hot Water systems, 1 Electric and 1 Gas
13.2 Kw of Solar power wit a 10 Kw converter
2 Rear AL fresco's.
Low Maintenance gardens
Pool with spa.
Get in before the open homes, call Trevor Parker on 0421361608

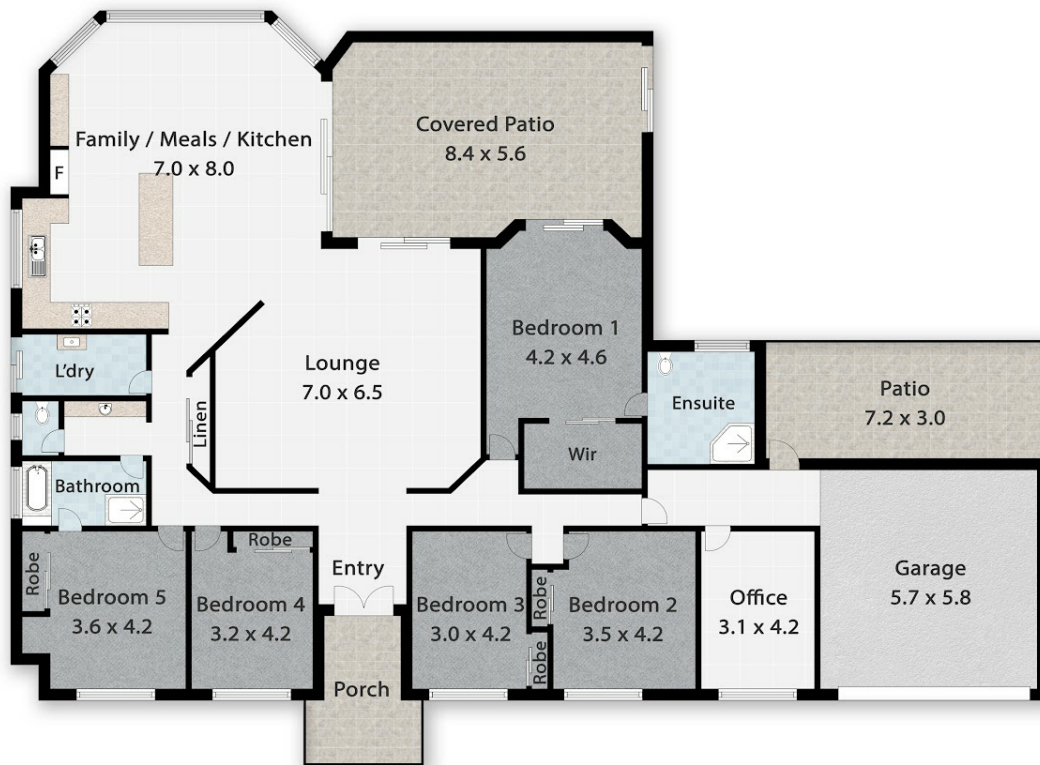
6 BED | 2 BATH | 6 CAR

PRICE:
\$1,300,000

OPEN FOR INSPECTION:
N/A



Trevor Parker
0421361608
trevorparker@atrealty.com.au
www.atrealty.com.au



321 LEACH ROAD, TAMBOURINE

Bed 5
 Bath 2
 Car 2

INTERNAL 315m² | EXTERNAL 73m² | TOTAL 388m²

@realty

Trevor Parker 0421 361 608

Measurements are approximate only and no responsibility is taken for any error, omission, or mis-statement. This is for illustrative purposes only and should be used as such by any prospective purchaser. www.picsandmortar.com.au

Disclaimer: Please note this floor plan is for marketing purposes and is to be used as a guide only. All dimensions are estimates only and may not be exact measurements.

Trevor Parker
0421361608
 trevorparker@atrealty.com.au
www.atrealty.com.au

@realty