



**SOLD**

## LOW MAINTENANCE INVESTMENT | ELEVATED VIEWS AS FAR AS THE EYE CAN SEE

The ideal set-and-forget investment in sought after Edens Landing, a family suburb located approximately halfway between Brisbane and the Gold Coast, within the catchment of numerous schools and just moments from parks, shops and public transport.

This low maintenance solid brick and tiled build is refreshing good value with WOW factor, set on an elevated 700m<sup>2</sup>, with the large backyard and covered outdoor balcony overlooking gorgeous views of the reserve.

Long term tenant looking to stay on. Tenant has requested to not have photos of her personal belongings online.

Features of your new investment home include;

- \* Spacious air-conditioned dining and family area adjacent to the kitchen, flowing onto the undercover patio with stunning mountain and nature views.
- \* Additional air-conditioned lounge provides room for everybody.
- \* Smart storage throughout, the three bedrooms enjoy built-ins.
- \* Three bedrooms with built-ins
- \* Main bedroom with direct access to main bathroom
- \* Renovated bathroom with separate bath & shower
- \* Large open-plan kitchen with breakfast bar
- \* Low-maintenance tiled floors throughout
- \* Security & Insect Screened
- \* Large Laundry with storage
- \* Ceiling fans in living & main bedroom
- \* Covered outdoor entertaining balcony
- \* Tandem garage
- \* Fully fenced Rear Yard
- \* Stunning views over reserve
- \* Elevated block captures breezes
- \* Walk to Train & Shops

**3 BED | 1 BATH | 1 CAR**

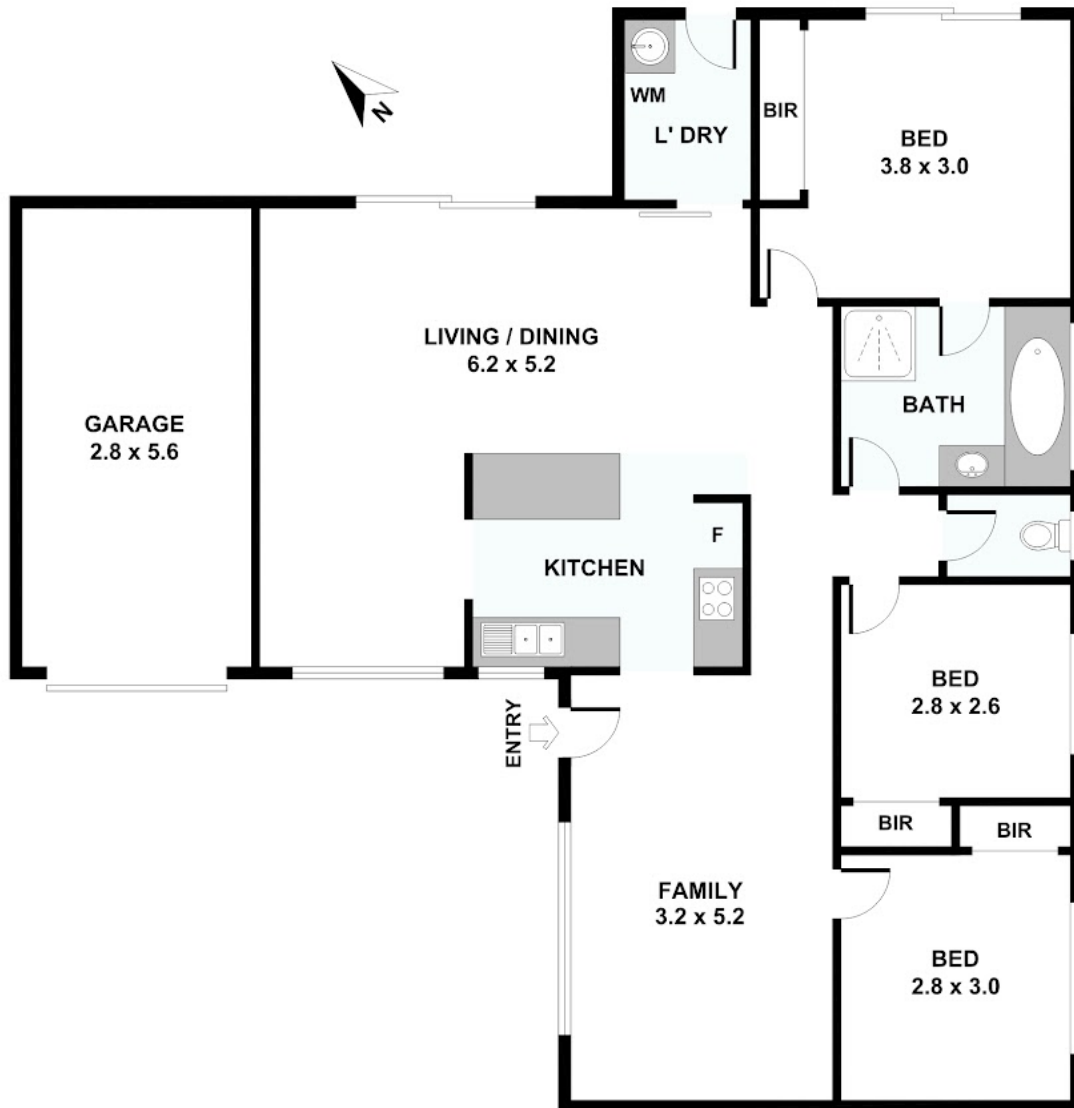
**PRICE:**  
\$495,000

**OPEN FOR INSPECTION:**  
N/A



**Mitchell Wakeham**  
**0400297141**  
newvoguerealty@atrealty.com.au  
[www.atrealty.com.au](http://www.atrealty.com.au)

# 46 Wantana Crescent, Edens Landing



Disclaimer: Please note this floor plan is for marketing purposes and is to be used as a guide only. All dimensions are estimates only and may not be exact measurements.