



SOLD

AFFORDABLE RETIREMENT LIVING

Contact your local Agent for an inspection Tricia 0457 314 206

A new way of life could be yours. A lovely cabin located in leafy Woodcroft Tourist Park. This open plan 2 bedroom home offers peaceful & low-maintenance living for over 50s. With the bonus of being so close to public transport, Woodcroft Town Centre, the Woodcroft Hotel and 15mins to Flinders Medical Centre.

This lovely home offers:-

Two spacious bedrooms, master with 2 BIRs, able to accommodate double & queen size beds.

Neat and sweet kitchen with and gas cooker and plenty of cupboard space all in neutral tones.

A spacious lounge and dining area adjacent to the kitchen.

Reverse cycle split system heating & cooling for year round comfort

Centrally located bathroom with laundry

Single carport and solar panels.

The park backs onto Thaxted Park Golf Course and is in a lovely bushland and creek setting.

Kangaroos and ponies roam within a separate fenced area, there for everyone to enjoy.

Home loans are not possible when buying in the park

No cats or dogs

RLA 271071 RLA 269823

2 BED | 1 BATH | 1 CAR

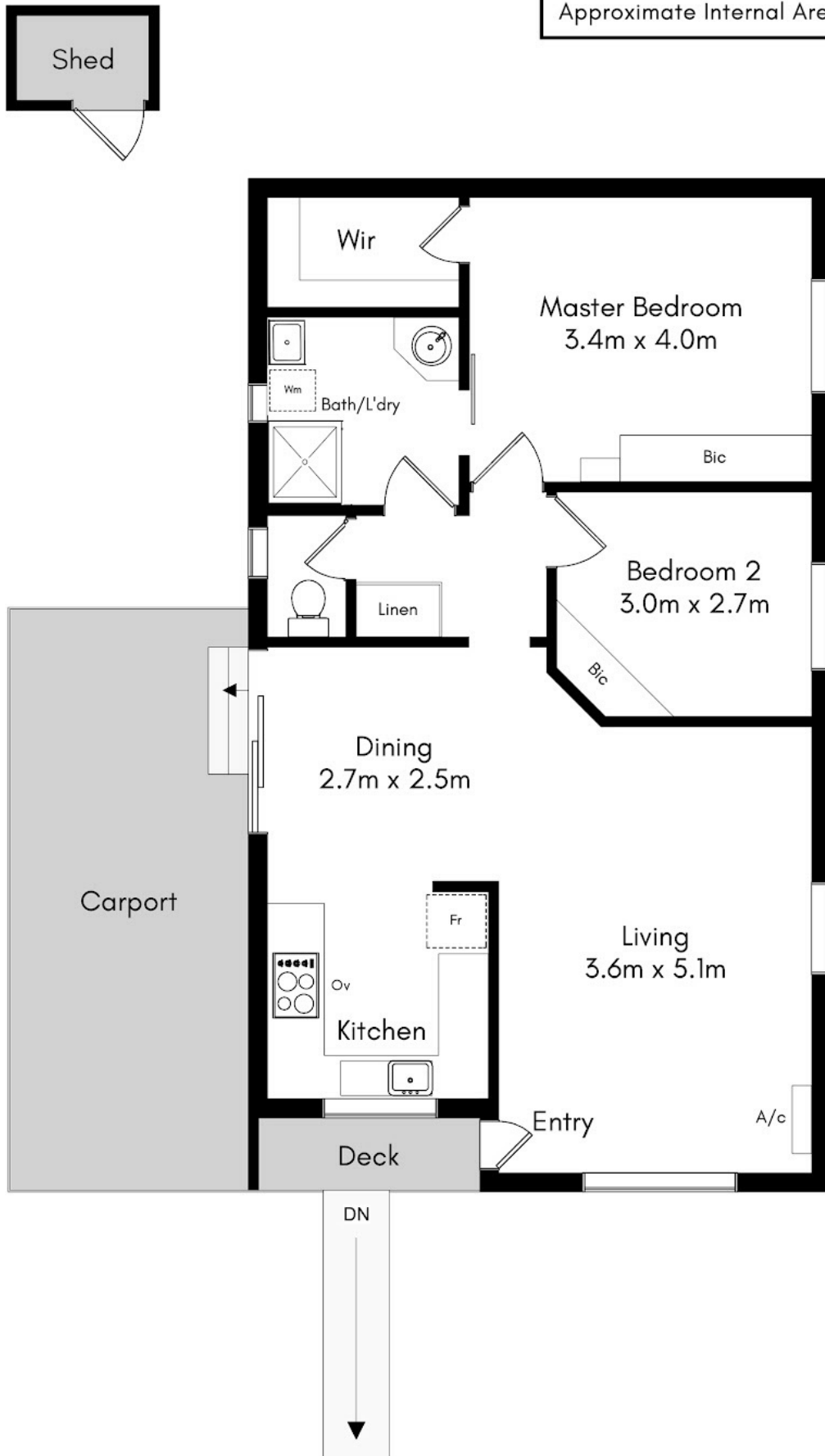
PRICE:
\$127,000

OPEN FOR INSPECTION:
N/A



Tricia Kernahan
0457314206
tricia@atrealty.com.au
fkrealestate.com.au
RLA: 269823

Approximate Internal Area - 76 SQM



Disclaimer: Please note this floor plan is for marketing purposes and is to be used as a guide only. All dimensions are estimates only and may not be exact measurements.

DISCLAIMER

This drawing is for illustration purposes only. The information contained is NOT intended to be part of any contract. All measurements are approximate and should be independently verified. While every effort has been made to verify the correct details in this drawing, the agent, vendor or illustrator accept responsibility for any errors, omissions, or wrongful inclusions.

Tricia Kernahan
0457314206
tricia@atrealty.com.au
tfkrealestate.com.au

