

**SOLD**

## COUNTRY CHARM

Charming family home that exudes warmth and offers a unique home in a whisper quiet location. This home offers lots of extras including air conditioning, solar panels and a huge bonus is the added storage room / workshop area in the garage ideal for the home handyman. The rear garden is low maintenance and is an ideal area to store a small boat or trailer and the third bay out the front is perfect for an additional vehicle.

Some of the many features include:

- Built by Redink Homes in 2013
- Set on a 489 sqm corner block
- Sweeping ranch style home with verandah
- 179 sqm of living area and 258 sqm in total area (approx.)
- Double door entry
- 31 course high ceilings to main living area
- Large separate media / theatre room
- 12 solar panels to help reduce running costs (3kw inverter)
- Solar hot water with gas booster back up

**4 BED | 2 BATH | 2 CAR**

**PRICE:**  
**\$473,000**

**OPEN FOR INSPECTION:**  
N/A



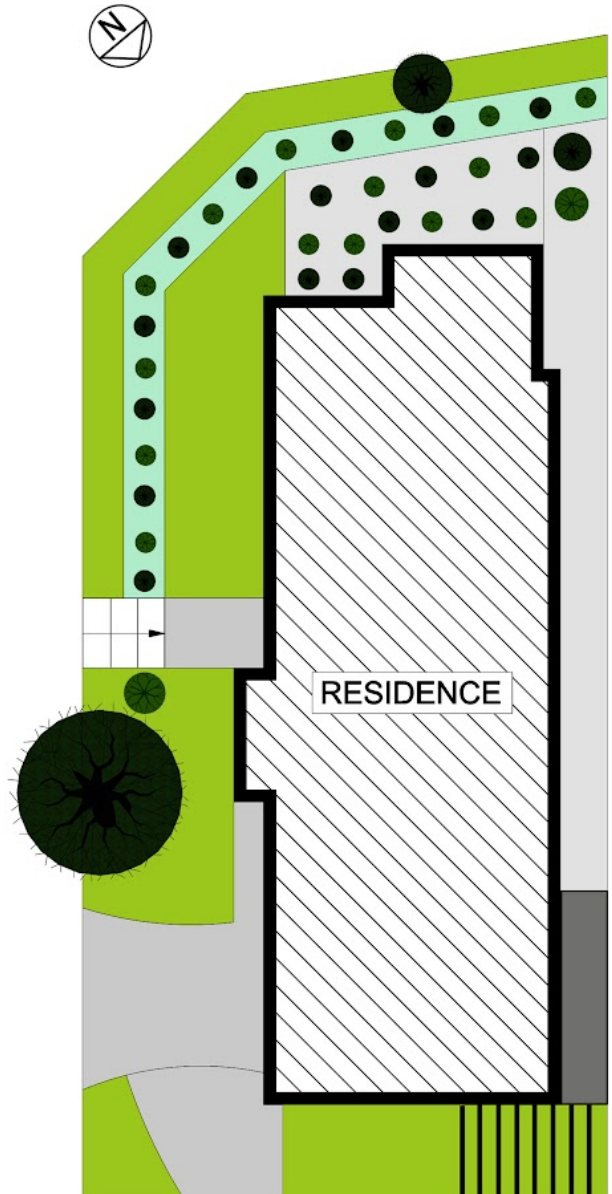
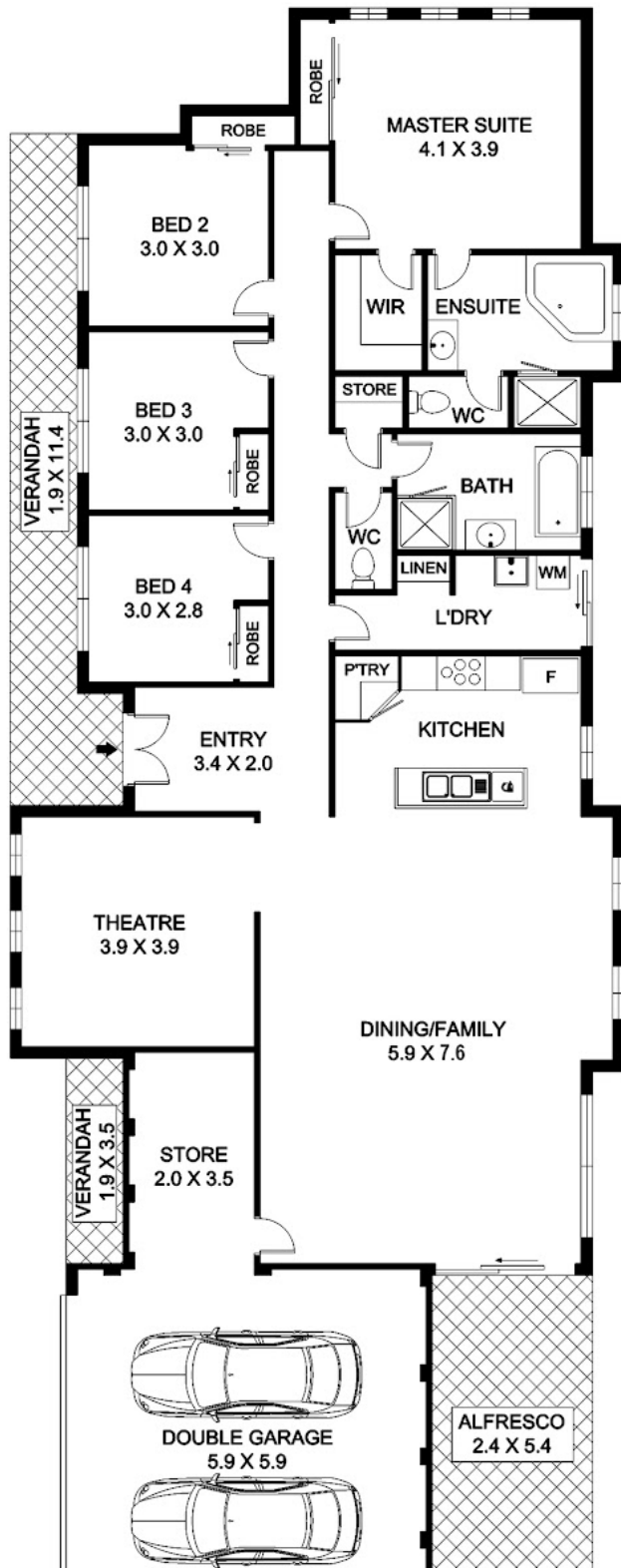
**Clarissa Alsop**  
**0421827669**  
clarissa@atrealty.com.au  
[www.atrealty.com.au](http://www.atrealty.com.au)

# 3 Highland Crescent MEADOW SPRINGS



Block Size 489m<sup>2</sup> | 4 Bedrooms | 2 Bathrooms | 2 Car  
Internal 179m<sup>2</sup> | External 79m<sup>2</sup> | Total 258m<sup>2</sup>

Clarissa Alsop | 0421 827 669



Disclaimer: Please note this floor plan is for marketing purposes and is to be used as a guide only. All dimensions are estimates only and may not be exact measurements.



REAL ESTATE FLOOR PLANS | [houseguru.com.au](http://houseguru.com.au) | © House Guru Real Estate Photography™

Whilst every attempt has been made to ensure the accuracy of the floor plan contained here, measurements of doors, windows, rooms and any other items are approximate and no responsibility is taken for error, omission or mis-statement. This plan is for illustrative purposes only and should only be used as such by any prospective purchaser. The services systems and appliances shown have not been tested and no guarantee as to their operability or efficiency can be given.

Clarissa Alsop  
0421827669  
[clarissa@atrealty.com.au](mailto:clarissa@atrealty.com.au)  
[www.atrealty.com.au](http://www.atrealty.com.au)

