



**SOLD**

## ANOTHER SOLD BY ADRIAN THOMPSON

Massive Family Home with Endless Options for Entertaining  
You'll be hard pressed to find a residence that is as immaculate as this fabulous home.

Situated on a large 700m<sup>2</sup> in a superb location close to local transport, shops, parks and schools. Offering enormous amounts of space whether it be entertaining family and friends indoors or outdoors, this home is truly a rare offering in this fabulous location.

Upon entering the home a formal lounge/living area is the first thing you'll notice is a wonderfully ambient place to relax in front of the TV after hard days' work.

The large kitchen features enough room to accommodate for a double door fridge and includes a dishwasher, allows for seamless indoor and outdoor flow from the dining room to the outdoor entertaining area.

- Open plan living/dining flows seamlessly to large alfresco entertaining
- Fabulous floor plan separate living areas, air-con throughout
- Sparkling swimming pool surrounded by landscaped gardens
- Modern kitchen equipped with high-end European appliances
- Four generous sized bedrooms with walk-in robes, stylish bathrooms
- Stunning master with large ensuite
- Double lock-up garage, ample off-street parking
- Side Access
- Solar 6KW
- 700m<sup>2</sup>

**4 BED | 2 BATH | 2 CAR**

**PRICE:**  
\$1,100,000

**OPEN FOR INSPECTION:**  
N/A

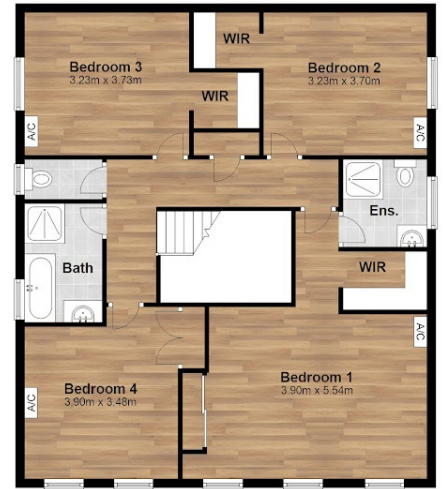


**Adrian Thompson**  
0419702002  
adrian@atrealty.com.au  
[www.atrealty.com.au](http://www.atrealty.com.au)

**Ground Floor**  
Approx. 170.9 sq. metres



**First Floor**  
Approx. 96.5 sq. metres



**63 Inverness Street, Upper Kedron**

Total Area: Approx. 299.8 m<sup>2</sup>

Every attempt has been made to ensure the accuracy of these plans, however they should be used as a guide only. Prospective purchasers should make their own enquiries



Disclaimer: Please note this floor plan is for marketing purposes and is to be used as a guide only. All dimensions are estimates only and may not be exact measurements.

