



**SOLD**

## 5 BEDROOM, HUGE HOME WITH POOL!

Located in a sought after quiet cul-de-sac, adjacent to parklands this massive ground level home features 5 bedrooms, a large living room and an extra rumpus room!!

The large Master bedroom, positioned at the front of the house is complete with its own walk in robe and separate ensuite.

The kids will have plenty of room to run around with the large land size of 812m2.

Features include :

- Huge, functional kitchen with a tonne of storage space
- Rear verandah for entertaining
- Double Carport
- Solar electricity panels on roof
- Fully tiled internally
- Fully air-conditioned with split systems throughout
- Fully fenced
- Side gate access to secure a boat or trailer
- Garden Shed
- Easy care, low maintenance gardens
- Large in-ground swimming pool

This property is a must see!

Year built : 2005

Palmerston Council Rates : Approx \$1350 per year

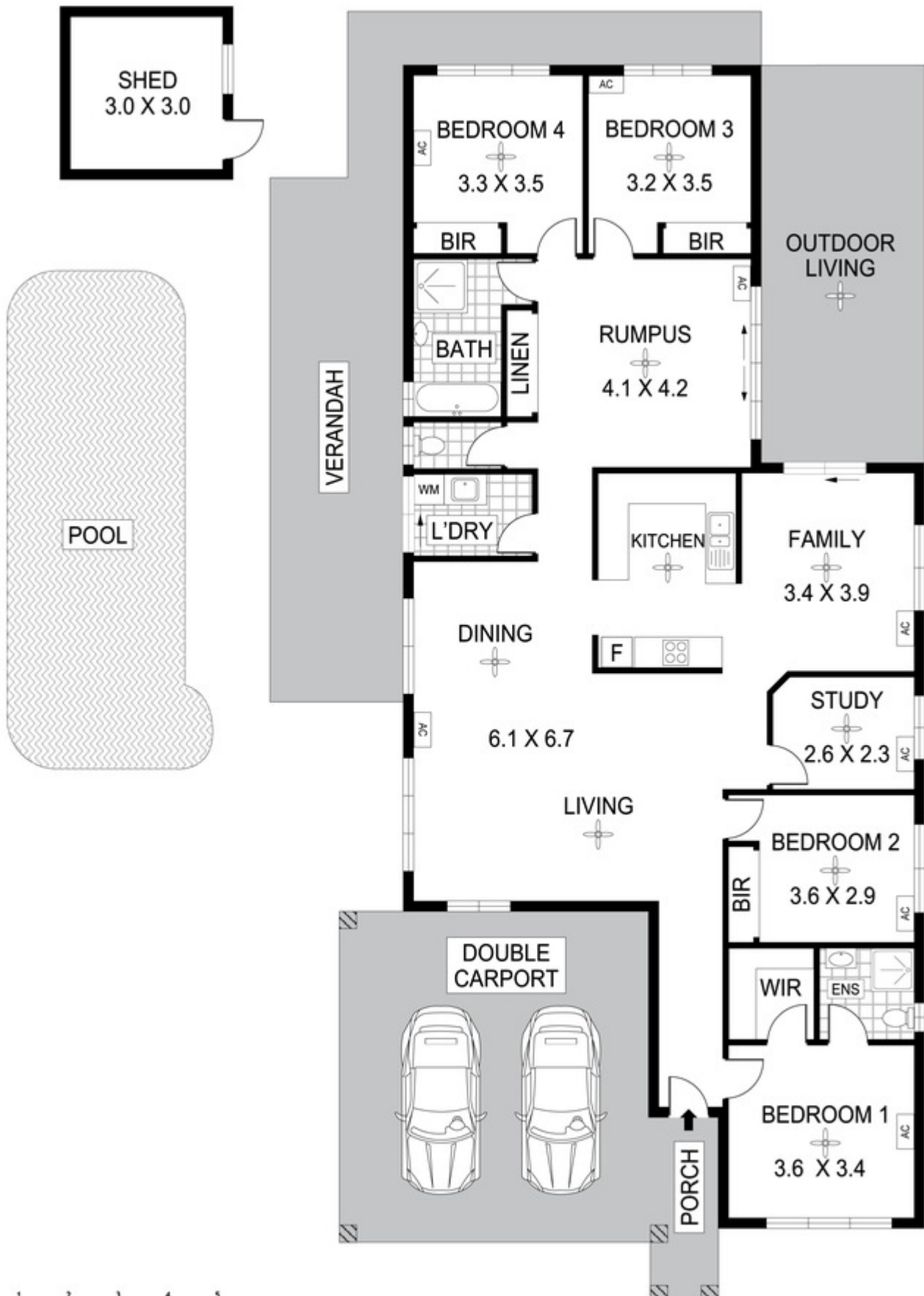
5 BED | 2 BATH | 2 CAR

PRICE:  
\$635,000

OPEN FOR INSPECTION:  
N/A



**Nicole Wheeler**  
**0417508800**  
nicolewheeler@atrealty.com.au  
[www.atrealty.com.au](http://www.atrealty.com.au)



Disclaimer: Please note this floor plan is for marketing purposes and is to be used as a guide only. All dimensions are estimates only and may not be exact measurements.

## 8 Juma Place, Rosebery

Nicole Wheeler  
0417508800  
nicolewheeler@atrealty.com.au  
[www.atrealty.com.au](http://www.atrealty.com.au)

