

FOR LEASE

MODERN TWO BEDROOM APARTMENT WITH VIEW TO SURFERS PARADISE

****CALL OR EMAIL FOR AN INSPECTION BY APPOINTMENT, THE FIRST INSPECTIONS ARE 13/04/2022 ****

Looking for a two bedroom apartment with a generous size balcony and situated on the 3rd Floor facing east with views to Surfers Paradise, we have one available.

Features include:

- * Open plan living and dining
- * Modern style kitchen with stainless steel appliances and dishwasher
- * Main bedroom with a walk-in robe
- * Second bedroom with built-in robe
- * Air Conditioning open plan living area and main bedroom
- * Secure foyer entry and lift or stairs access to all levels
- * Gated underground basement parking with lift access
- * Single car allocated space next to lift to floor
- * Less than 7km to Pacific Fair Shopping Centre, Capri on Via Roma or Surfers Paradise
- * Balcony off living area

Complex has:

- * Three Tree Frogs Café & Restaurant on site. Open 7 days a week 6:30am to 2:30pm and Thursday to Saturday nights 6pm to 8:30pm. Waterford room service is available 7 days a week at no extra cost (no more Uber)
- * Resort style swimming pool with sunchairs
- * Gymnasium
- * BBQ entertaining
- * Picnic nooks

Lifestyle benefits:

Walk to corporate centre, HOTA, Turf Club, and Chevron Island bars and restaurants.

Small pets considered on application with approval from Body Corporate.

Note: Tenants to pay water consumption charges, Electricity through LPE (embedded network)

2 BED | 1 BATH | 1 CAR

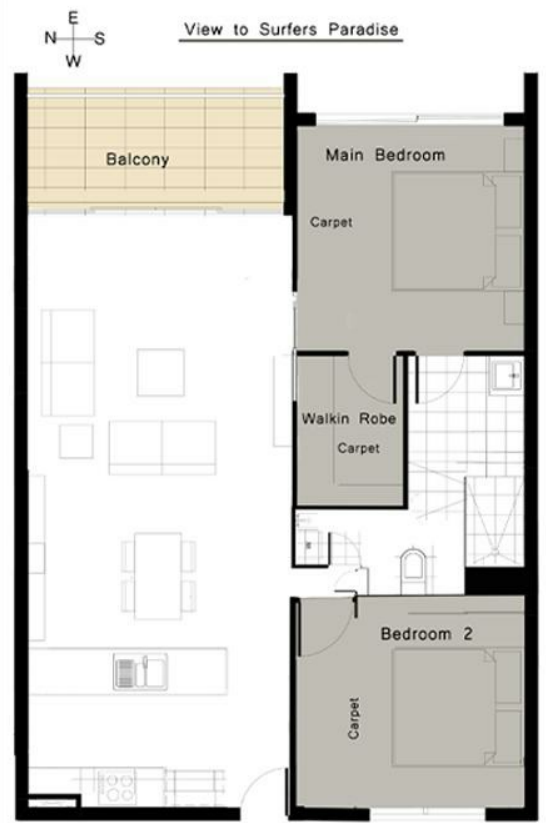
PRICE:
\$530 per week

OPEN FOR INSPECTION:
N/A



Lynne Wenban
0409008272
lynnewenban@atrealty.com.au
www.atrealty.com.au

WATERFORD APARTMENTS BUNDALL



Disclaimer: Please note this floor plan is for marketing purposes and is to be used as a guide only. All dimensions are estimates only and may not be exact measurements.

Lynne Wenban
0409008272
lynnewenban@atrealty.com.au
www.atrealty.com.au

