

SOLD

BE QUICK FOR THIS ONE....

What a great opportunity for the first home buyer, the retiree or investor! A neat and tidy home on a level, corner block that has been well maintained and will suit many.

This 3-bedroom brick and tile home includes a spacious lounge room, kitchen/dining area with lovely, high raked ceilings. The bedrooms are all a good size with built in robes. Large main bathroom also in very good condition and there is a second separate toilet.

There are many extras to this property including air con in the lounge room and loads of storage. Single remote garage with internal access to the home plus a concrete bay with secure gates at the side for the boat/van.

The fenced yard includes garden sheds and has plenty of space for the family, pets and veggie gardens.

Don't delay, as this property ticks a lot of boxes and is priced to sell – we expect it won't last long!
Call Narelle 0435 0546 25 for Craig 0412 080 287 for your private inspection.

We make no representation or warranty as to the accuracy, reliability or completeness of the information relating to the property. Some information has been obtained from third parties and has not been independently verified. Accordingly, no warranty, representation or undertaking, whether express or implied, is made and no responsibility is accepted by us as to the accuracy of any part of this, or any further information supplied by or on behalf of our behalf, whether orally or in writing.

NOTE: we are a local Nambucca Valley Real Estate that has its Head Office in Sydney.

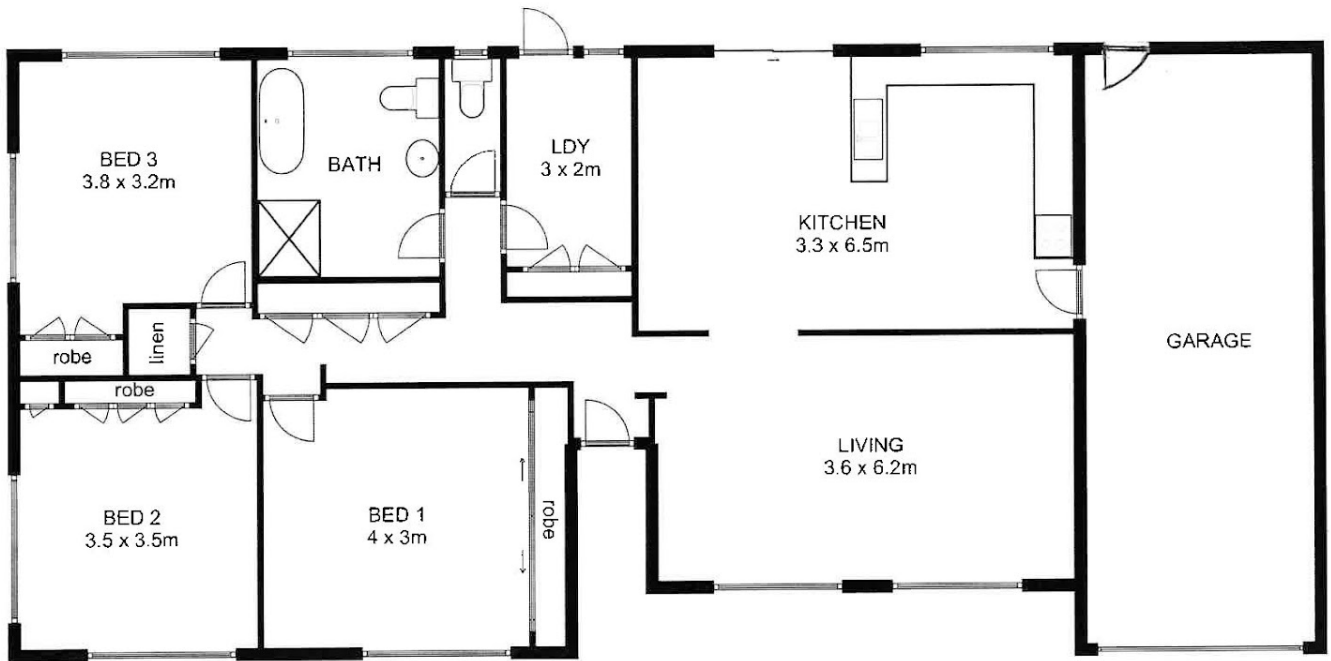
3 BED | 1 BATH | 1 CAR

PRICE:
\$615,000

OPEN FOR INSPECTION:
N/A



Narelle Harper
0435054625
narelleharper@atrealty.com.au
www.atrealty.com.au



TOTAL: 137 sqm

58 MARSHALL WAY

This floor plan is not to scale. Areas and dimensions are approximate and therefore plan should only be used for illustrative purposes.

Disclaimer: Please note this floor plan is for marketing purposes and is to be used as a guide only. All dimensions are estimates only and may not be exact measurements.