

SOLD

DUAL LIVING WITH VIEWS OUT TO THE BASS STRAIT

This beautifully presented and tastefully updated brick veneer home in Miandetta, sits on approximately 736m² of land, was built in 1978 and has dual living arrangements in place. This makes it perfect for a large or blended family, the in laws or the teens, or earn an income from one and live in the other. The downstairs would also make a terrific parents retreat or rumpus room for the kids. So many options. Just depends what you're looking for.

The upstairs consists of 3 good size bedrooms, the master with ensuite and walk in wardrobe and each of the others with built ins. Separate shower and bathtub making it ideal for bathing the kids or just winding down at the end of a busy week. The toilet is also separate and close by.

The main living area is at the centre of the home featuring beautiful lighting and access to downstairs through the internal staircase, which can be locked off if required and there is a terrific study area at the front of the home, which doubles as a lovely sitting area, soaking up the all day northern aspect. From here in the afternoons, you can also enjoy the most spectacular sunsets on the north west coast. Every aspect is covered in this lovely family home.

The kitchen dining area also faces north and the sun rising in the morning comes right into the dining area, creating a lovely place to sit and enjoy your morning cuppa or family breakfast. From these northern rooms, you can also enjoy views across Devonport and out to the Bass Strait making this home a truly lovely place to live.

There is a reverse cycle heat pump on the upper level, creating comfort all year round and the downstairs features a large heater, which creates a very cosy environment in those cooler winter months.

Plenty of storage to keep everything in its place and the underneath features a huge storage area complete with shelving and power.

Some of the many features of this property include:
Tinted windows on most of the windows.

Blinds and curtains on most of the windows. (All upstairs bedrooms feature sunshade and block out blinds).

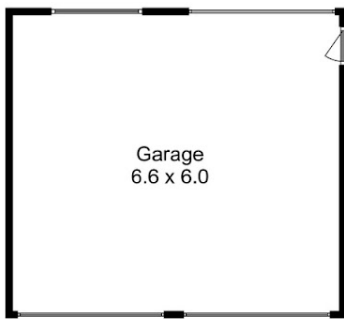
4 BED | 3 BATH | 2 CAR

PRICE:
\$660,000

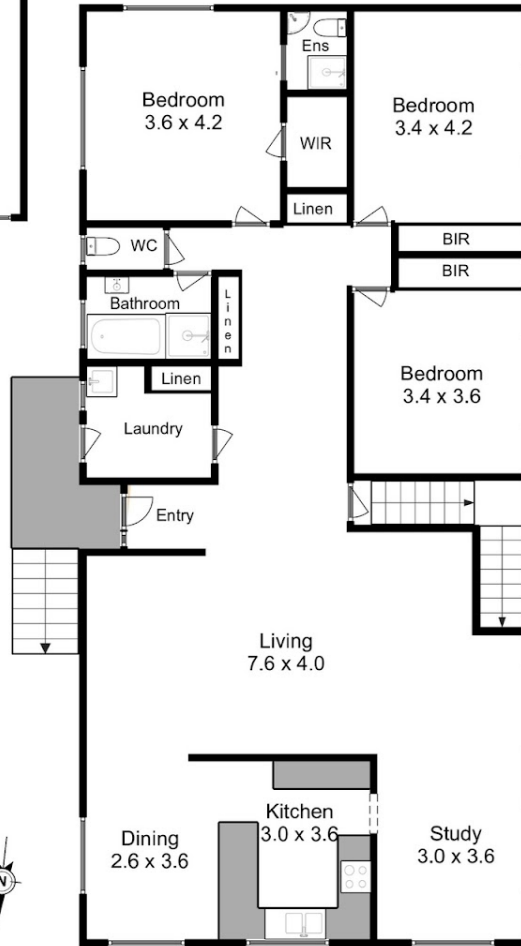
OPEN FOR INSPECTION:
N/A



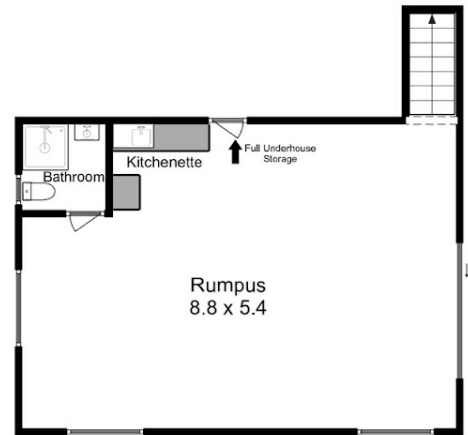
Hayley Martin
0417780220
hayleymartin@atrealty.com.au
www.atrealty.com.au



Lower Level



Upper Level
158 sq m



Lower Level

Produced by Open2view.com for @realty
Not to scale. This floorplan is a sketch,
and all dimensions stated are approximate.
All room measurements are in metres.



Disclaimer: Please note this floor plan is for marketing purposes and is to be used as a guide only. All dimensions are estimates only and may not be exact measurements.