



**SOLD**

## ULTRA-LUXE RESORT-STYLE LIVING BY THE BAY

A masterpiece in contemporary design and resort-style tranquillity, this spectacular lifestyle residence offers unforgettable dimensions showcasing a combination of magnificent proportions, sensational indoor-outdoor spaces and state-of-the-art luxury over two beautifully zoned levels.

Timeless modern elegance seamlessly merges with the beautifully curated outdoor spaces, where alfresco dining is enjoyed by the magnesium pool and fully landscaped garden, complete with ambience lighting for lavish evening entertaining.

High ceilings and walls of glass accentuate the luxurious feeling of space throughout, flowing from the expansive reception hall into the palatial open-plan living domain and out to the brilliantly landscaped private gardens with a borrowed green wall aspect of established palms. Further enhanced by the premium stone-bench kitchen, catering to all occasions with high-end appliances (including a 900mm stove), an island bench and a large walk-in butlers' pantry.

This is a wonderfully zoned property offering creature comforts including, reverse cycle ducted air-conditioning throughout, fully-tiled bathrooms serve four robed bedrooms, including the indulgent main suite with spa bath, walk-in robes and a twin vanity ensuite. There is a first-floor lounge for the kids plus a sumptuous media room/5th bedroom downstairs providing further flexibility, large 5.2Kw solar power system, double remote garage with internal access, for security the property includes a remote controlled alarm system, for ease landscape maintenance the gardens are serviced by a automated irrigation system.

Prestigiously located within walking distance to the sparkling shores of Bramble Bay and the vibrant hub of Sandgate, where excellent schools, shops, cafes and restaurants are all at your fingertips.

This home in summary features:

### GROUND FLOOR...

- Open plan living complete with 2.7m meter ceilings and tile flooring throughout with an abundance of natural light.
- Generous main living area.

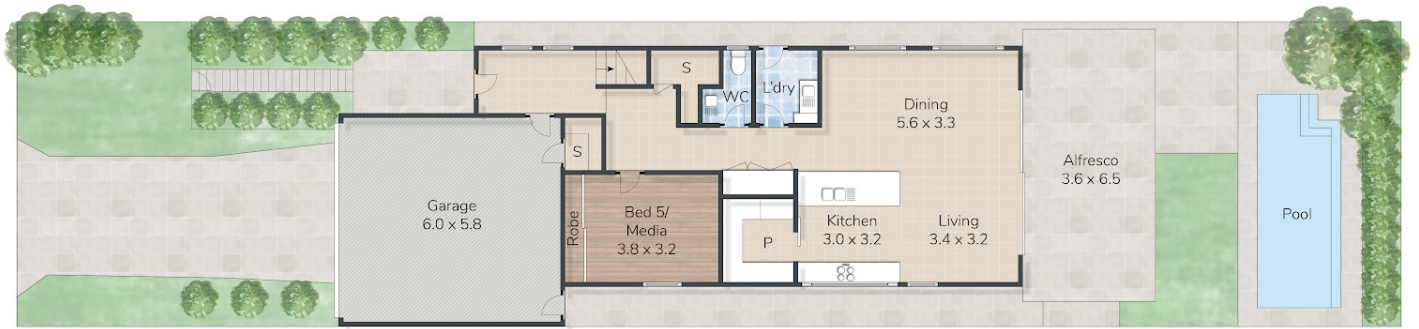
**5 BED | 2 BATH | 2 CAR**

**PRICE:**  
**\$1,370,000**

**OPEN FOR INSPECTION:**  
**N/A**



**Andrew Botwright**  
**0402784250**  
andrewbotwright@atrealty.com.au  
[www.atrealty.com.au](http://www.atrealty.com.au)



Ground Level

## 42 VICTORIA STREET, BRIGHTON

This floor plan is for marketing purposes only. Dimensions and layout are approximate. Mountfort Media gives no guarantee or warranty over the accuracy of this plan.

INT: 240 sqm  
 EXT: 46 sqm  
**TOTAL: 286 sqm**

Disclaimer: Please note this floor plan is for marketing purposes and is to be used as a guide only. All dimensions are estimates only and may not be exact measurements.