

18 FITZROY STREET, WILTON, NSW, 2571



SOLD

SEMI RURAL LIVING ON A 1,018SQM BLOCK OF LAND

This home's superb setting is impressive to say the least. The location encompasses a semi rural lifestyle that is accompanied with a growth plan that will excite any astute buyer looking to settle down & raise a family. The home's easy flow floor plan has been designed with comfort & practicality in mind with its use of space being cleverly maximised to ensure a high standard of quality living is achieved. If you love to spend quality time outdoors, you are spoilt for choice, the alfresco overlooking the backyard is a delight, the covered spa offers a relaxing setting or you may prefer to sunbake atop the timber decking while reading a book, the expansive backyard offers plenty of options for the whole family.

Features Include:

- Three generously proportioned bedrooms with built in robes
- Expansive living room
- Dining room includes a combustion fireplace
- Well appointed kitchen with ample cupboard & bench space
- Stainless steel appliances including a dishwasher
- Pantry
- Breakfast bar
- Bright & airy three way bathroom is equipped with a bathtub
- Spacious laundry
- Linen cupboard
- Entertaining alfresco overlooking the backyard
- Covered spa
- Timber decking
- Spacious studio / workshop separate from house with roller door access
- Children's playhouse
- Garden Shed
- Single garage with internal access & built in storage
- Established & manicured gardens
- 1,018sqm block

This ideal home is located away from the hustle and bustle of city life but still within close proximity should you wish to venture out. Local schools, shops, parks & sporting facilities are all

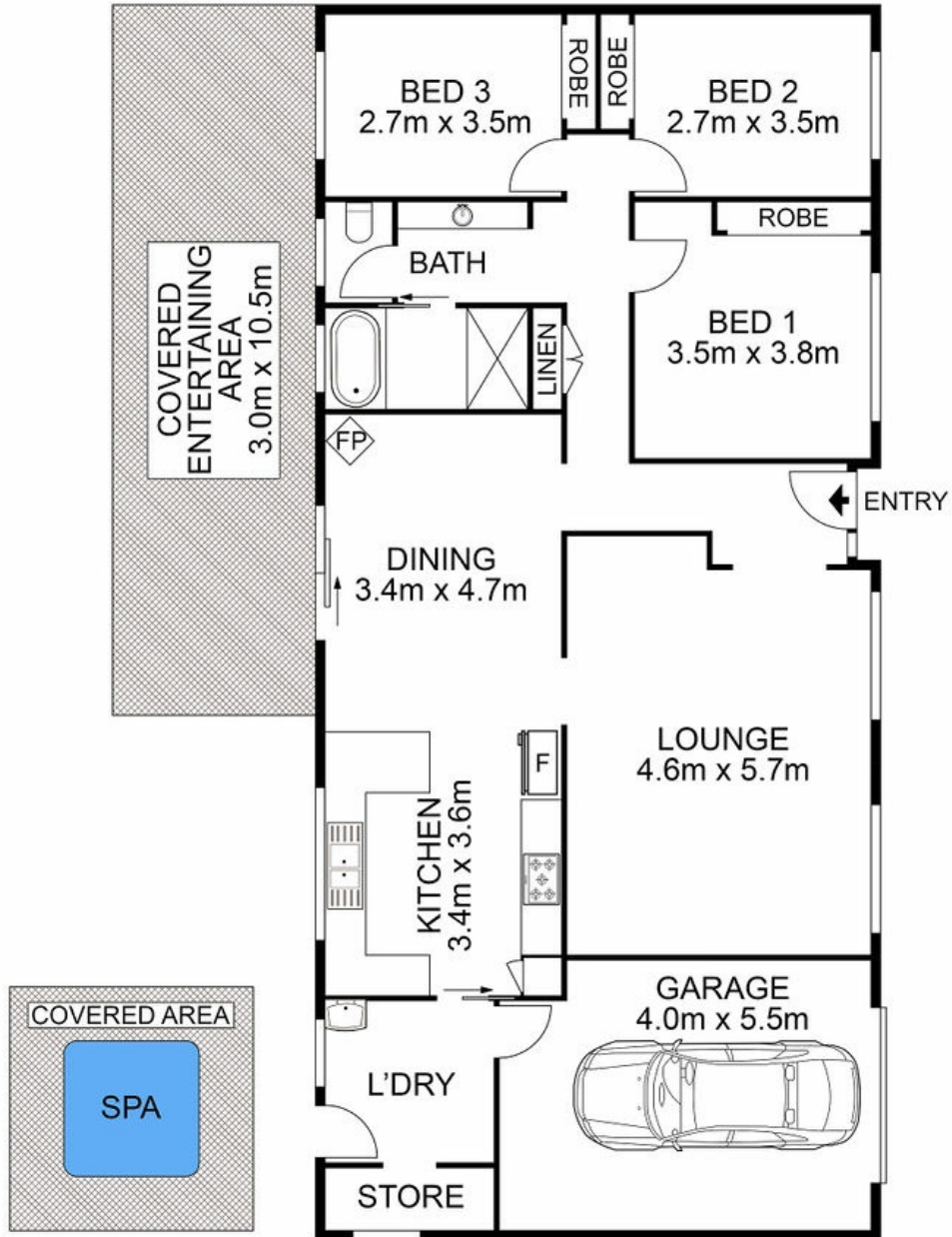
3 BED | 1 BATH | 1 CAR

PRICE:
\$1,000,000

OPEN FOR INSPECTION:
N/A



Adam Bryant
0455672323
adam@atrealty.com.au
www.atrealty.com.au



 AGENCY

Disclaimer: Please note this floor plan is for marketing purposes and is to be used as a guide only. All dimensions are estimates only and may not be exact measurements.

18 Fitzroy Street, Wilton

Adam Bryant • All measurements are approximate • Drawn for marketing purposes only
 0455672323
 adam@atrealty.com.au
 www.atrealty.com.au

