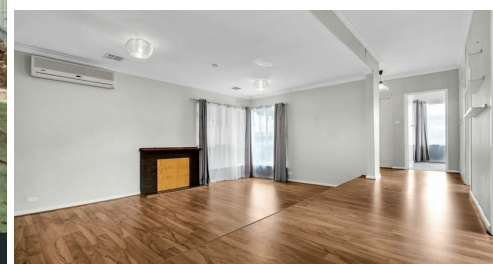
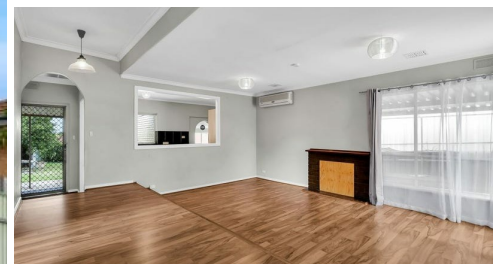
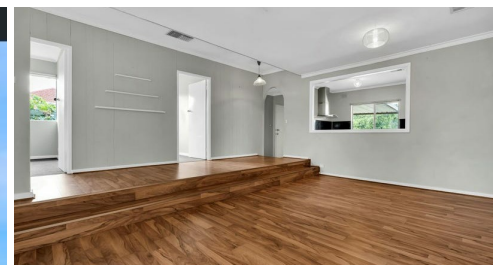


10 BOOTH AVENUE, MORPHETT VALE, SA, 5162



## FOR LEASE

### (APPLICATION ACCEPTED) SPACIOUS FAMILY HOME

Comprising  
4 bedrooms or 3 plus a study (built in robes to bedrooms 1 and 2)  
Sunken formal lounge  
Well equipped kitchen with dishwasher  
Family room with combustion stove  
Bathroom plus separate toilet  
Ducted heating and cooling  
Fully fenced yard  
Solar panels  
Under cover entertaining area  
Huge rear yard with garden shed  
Single garage with auto roller door plus plenty of off street parking  
Convenient location close to schools, shopping and public transport  
RLA 269823

4 BED | 1 BATH | 1 CAR

PRICE:  
\$490 per week

OPEN FOR INSPECTION:  
N/A



**Andrew Giles**  
**0414696936**  
gilesproperty@atrealty.com.au  
[www.atrealty.com.au](http://www.atrealty.com.au)  
RLA: 269823