

SOLD

LOCATION LOCATION LOCATION IN CAPE PATERSON

For Over 50 High Res photos, videos, Virtual Tours visit the dedicated property website at 59coral.com

Be quick to inspect this totally unique and custom designed home in a highly sought after pocket of Cape Paterson. Enjoy over 300 sqm of internal space with an amazingly flexible floor plan, perfect for an extended family, Air BnB income or just to enjoy the picture perfect position overlooking the spectacular Cape community gardens and out to the coastline beyond.

Set on an increasingly rare oversized block of over 900 sqm you will love the privacy of the fully landscaped grounds, complete with side access for a boat or caravan, and an oversize double carport with lockable a lockable workshop.

Access to the Cape's beautiful walking and cycling tracks is via a pathway at the side of the property, delivering you to Cape Paterson's stunning beaches in moments.

This quality built residence also offers great work from home options with a stunning office / studio space on the ground floor with great light and access to the gardens. Currently used as an art studio the potential options here are endless.

Other stand out features are double glazed windows throughout, solar panels, solid wood floors an amazing sun deck on the first floor and kitchens on both levels.

Early inspection is highly recommended to appreciate all that is on offer at this stunning Cape Paterson residence.

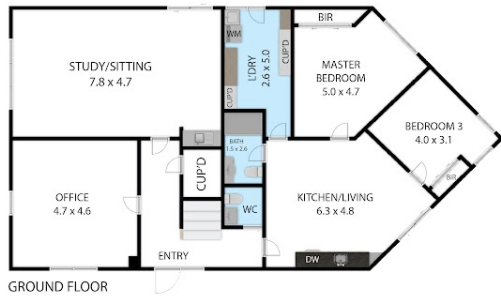
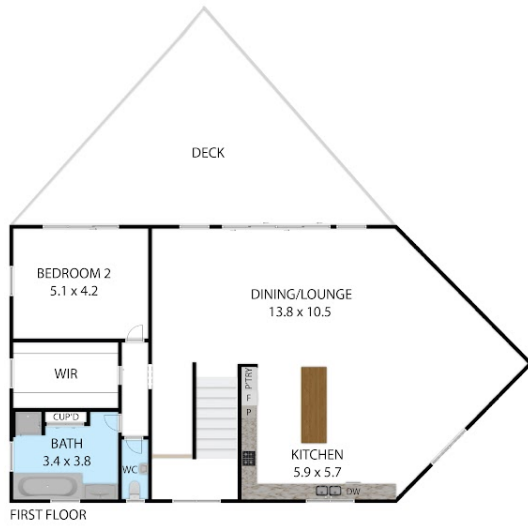
4 BED | 2 BATH | 2 CAR

PRICE:
\$1,220,000

OPEN FOR INSPECTION:
N/A



Leo Edwards
0472523445
leo@atrealty.com.au
www.atrealty.com.au



59 Coral Street, Cape Paterson 3995

TOTAL APPROX. FLOOR AREA 320 SQ.M

Whilst every attempt has been made to ensure the accuracy of the floor plan contained here, measurements of doors, windows, rooms and any other items are approximate and no responsibility is taken for any error, omission, or misstatement. This plan is for illustrative purposes only and should be used as such by any prospective purchaser.



Disclaimer: Please note this floor plan is for marketing purposes and is to be used as a guide only. All dimensions are estimates only and may not be exact measurements.