



SOLD

IMMACULATE 6 YEAR OLD, THERMAL EFFICIENT HOME IN HIGHLY SOUGHT AFTER AREA.

2 bedrooms plus study, Master with ensuite and second bedroom with walk through bathroom. Both with spacious built-in wardrobes, Spacious modern kitchen with plenty of drawers, Built in glass display cabinets, Miele dishwasher, 4 burner gas cooker, Stone benchtops, Plenty of storage cupboards, Linen cupboard with internal power point, Window seating in dining, Louvre windows in living, Timber louvre blinds, Secure a mesh security screens on most windows, Tiled flooring throughout, Carpeted bedrooms/ study and living areas, Reverse cycle air con in living, Quantum trend windows, Walk through laundry, Clothesline under roof facing western sun, Spacious under roof outdoor entertaining area, Gas hot water, Thermal efficient home, NBN cable to street with conduit to house for connection, DLUG, Landscaped gardens, Termi mesh, 2 x 22,500L underground water tanks, Standard septic tank, Stone block retaining walls, Garden shed, Water fountain out front, Fenced yard, Various Citrus trees throughout.

This property is an absolute gem with so many sought after attributes. The location couldn't be any better for those who wish to walk to all the local conveniences including, cafes, restaurants, the local iga supermarket, library, medical centre, and more.

Please contact the agent for a private viewing as this property is a must see and will impress the most fastidious buyers.

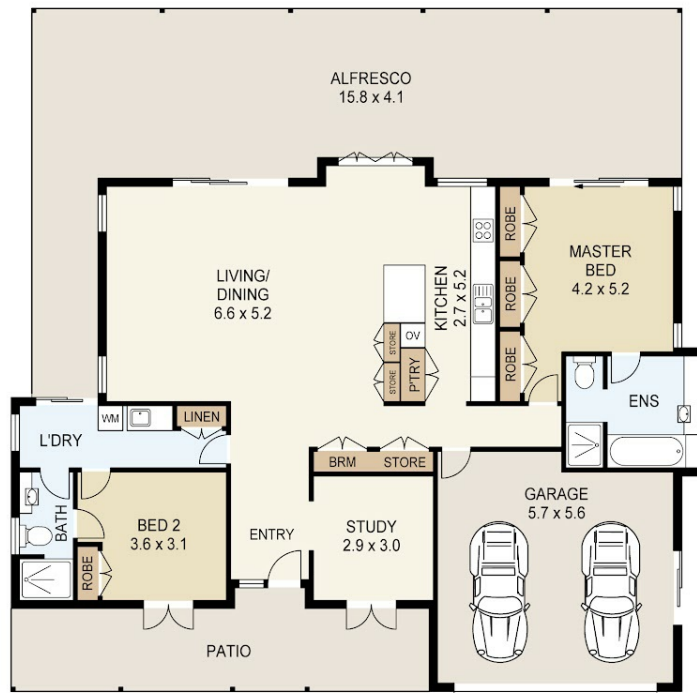
2 BED | 2 BATH | 2 CAR

PRICE:
\$970,000

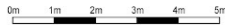
OPEN FOR INSPECTION:
N/A



Karin Smith
0403012639
karin.smith@atrealty.com.au
www.atrealty.com.au



23 GRIFFITH STREET, TAMBORINE MOUNTAIN



SCALE UNIT IS IN METRES

All measurements are approximate and for illustration purposes only. It should not be considered 100% accurate. Interested parties should rely on their own enquiries.



Disclaimer: Please note this floor plan is for marketing purposes and is to be used as a guide only. All dimensions are estimates only and may not be exact measurements.