



**SOLD**

## FANTASTIC FAMILY LIVING IN MANGO HILL

### FANTASTIC FAMILY LIVING IN MANGO HILL

The Mark White Team are excited to show YOU this lovely, low-maintenance home in such a prime position in Mango Hill.

This quality built 6 year old terrace home is in a great location and only a couple of minutes' walk to the local shops train station, parks, schools and day care and walk and bikeways.

The close proximity to Public transport includes Mango Hill East Train station and North Lakes Westfield shopping centre and of course the fabulous Redcliffe Peninsular beaches and restaurants

The fully fenced backyard allows plenty of room for the children to run around, and has two entry gates, with side access to park a trailer or other toys. Great breezes flow through, with the lake nearby.

Your new home offers a perfect lifestyle and would also suit first home buyers, investors and owner-occupiers.

#### Additional Features include:

- Master bedroom with walk in robe, air conditioner and en suite
- 3 bedrooms with built in wardrobes and ceiling fans
- Open plan Lounge, and Dining areas flow to Covered Outdoor Entertainment Area
- Gourmet kitchen including quality stainless steel appliances and stone bench
- Air conditioning
- Remote control double garage
- Separate laundry and toilet downstairs
- Fully fenced & side access for trailer or boat etc
- No body corp.
- Low Maintenance
- NBN ready
- Close to great public and private Schools, Childcare centre, Walk to IGA, surrounding shops and Train Station. Handy to the Bruce Highway

**4 BED | 2 BATH | 2 CAR**

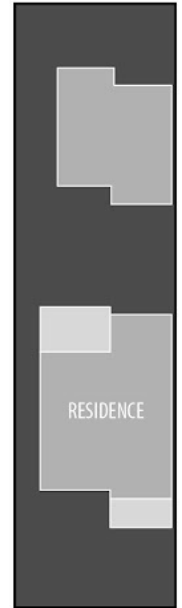
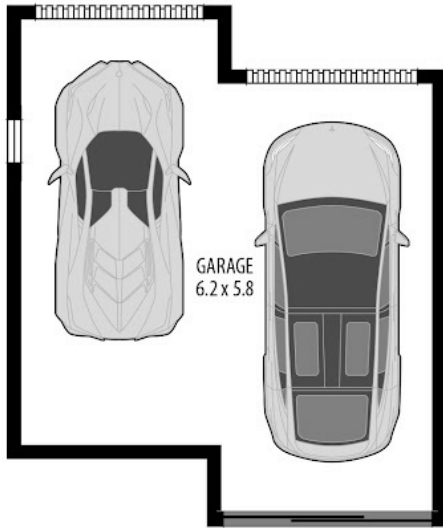
**PRICE:**  
\$633,500

**OPEN FOR INSPECTION:**  
N/A

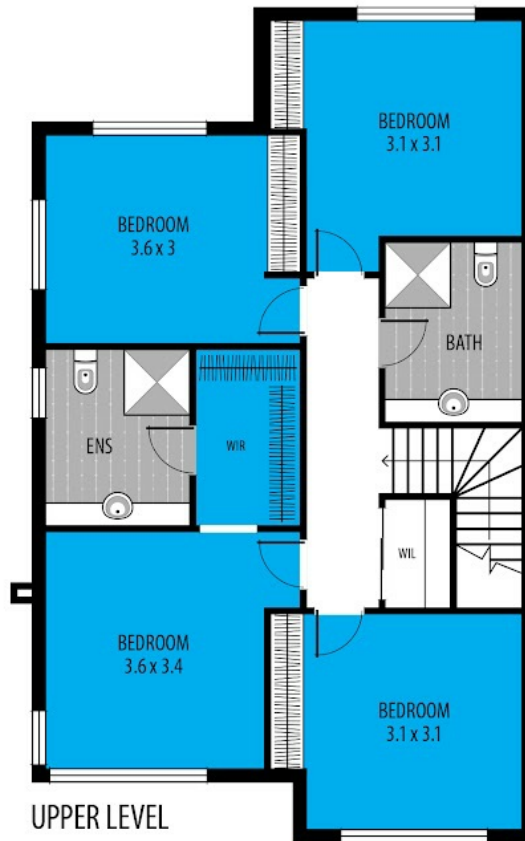
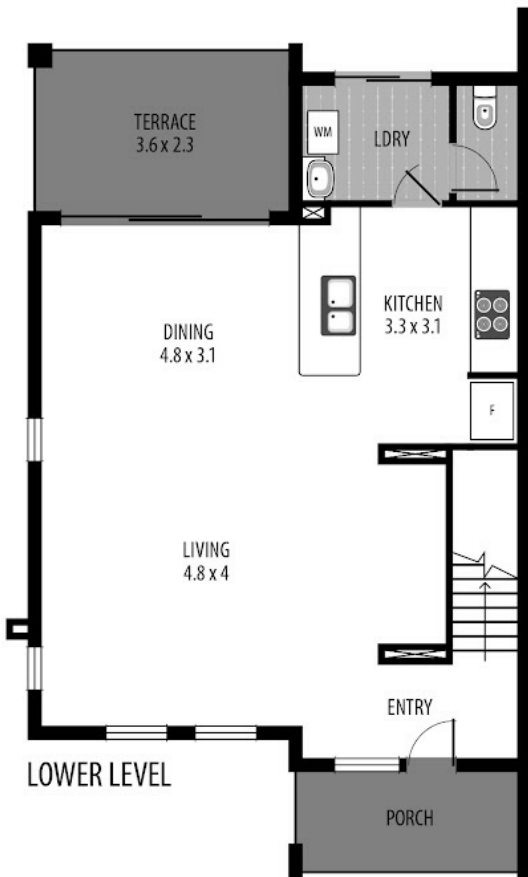


**Darryl White**  
**0429696044**  
darrylwhite@atrealty.com.au  
[www.atrealty.com.au](http://www.atrealty.com.au)

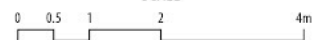
SITE PLAN  
(not to scale)



NAPIER AVE



SCALE



Disclaimer: Please note this floor plan is for marketing purposes and is to be used as a guide only. All dimensions are estimates only and may not be exact measurements.

MARK WHITE @realty

DISCLAIMER: ALL DIMENSIONS ARE APPROXIMATE ONLY AND NO GUARANTEE IS GIVEN IN RESPECT TO ITS ACCURACY. ANY PERSON VIEWING THIS INFORMATION SHOULD MAKE THEIR OWN INQUIRIES AND ONLY RELY ON THOSE INQUIRIES.

darrylwhite@atrealty.com.au  
www.atrealty.com.au