



FOR SALE

929SQM WITH ALL THE TRIMMINGS!

This well thought out, modern home is set high within a wonderfully established neighbourhood close to Drouin central and nearby parks, set on approximately 929sqm, the owners have taken great measures to ensure that this home is truly enjoyable to live in.

Soaring views across neighbouring parkland and greenbelt ensures the front aspect of the home takes advantage of its placement on the very desirable, high side of Kensington Square. Built for ease of living the home features 4 Bedrooms, 2 Living Rooms Plus a Cinema Room and Office. Double car Garage with rear roller door to access the back of the property in addition to the side access.

Inside space has been intelligently sectioned with a perfect kid's wing including bedrooms, bathroom and living room all separated by a door from the main open plan living and meals area. The Master bedroom includes a huge walk-in robe, double vanity ensuite and best of all, a private courtyard! Care has been taken to maximise the homes liveability including but not limited to, built in reading lights, wall mounted USB ports, external roller shutters and extensive CCTV system.

The open plan living area flows out through triple stacker sliding doors into the light and airy pergola that includes built-in gas outlet and television antenna for absolute entertainment. The yard is low maintenance with established foliage and professional retaining walls making the most of privacy and space. Additional garden shedding is cleverly positioned just below the fenced and manicured rear lawn.

Additional features include:

Quality new oven and rangehood

New flooring

Ducted heating

6.6KW Solar system

This home is in a great neighbourhood, close to town and absolutely everything has been taken care of. All you need to do is enjoy it!

4 BED | 2 BATH | 2 CAR

PRICE:

Contact Agent

OPEN FOR INSPECTION:

N/A

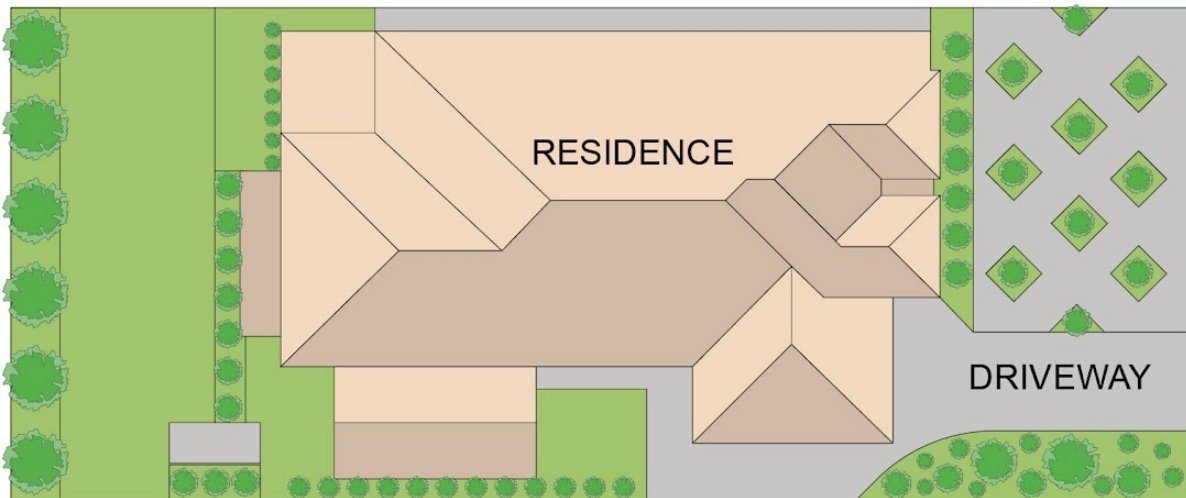


Mel Ahearn

0409183763

mahearn@atrealty.com.au

atrealtypropertysalesgippsland.com.au



17 KENSINGTON DRIVE, DROUIN

Disclaimer: Floorplan is for illustration only, prospective purchasers are advised to make their own enquiries.



Disclaimer: Please note this floor plan is for marketing purposes and is to be used as a guide only. All dimensions are estimates only and may not be exact measurements.