



SOLD

SOLD! SUPERB "KINROSS ESTATE" HOME!

SOLD!

Ladies and gentlemen, we are genuinely excited to welcome you to this fantastic family residence!

Situated on a 434m² block in Thornlands' exclusive 'Kinross Estate' is this premium modern home.

Exuding quality and class, the home is only 3 years old and includes high-spec finishes throughout.

A host of top-tier schools including Bayview State, Carmel College and Thornlands State are nearby.

And the home is beautifully presented and equipped with an array of appealing features, including:

- * 4 spacious built-in bedrooms including large main
- * 2 bathrooms including an ensuite in the main bed
- * Ducted air-conditioning throughout to keep it cool
- * Spacious family & dining + separate lounge room
- * Sleek kitchen, stone benches, island, gas cooking
- * Outdoor entertainment area with elevated aspect
- * Plenty of backyard space for kids and pets to play
- * Manicured & low-maintenance gardens & grounds
- * NBN and Foxtel available + a garden shed as well
- * 5.7m x 6.1m double lockup remote-control garage
- * Only 35 mins to Brisbane CBD + 45 to Gold Coast
- * Only a few minutes to the Bayside's best beaches!

Folks, homes of this calibre, quality and location are selling FAST so you'll need to be quick.

Don't miss out! Call now, buy today & enjoy your future! Contact Ben Tafolo for a price guide.

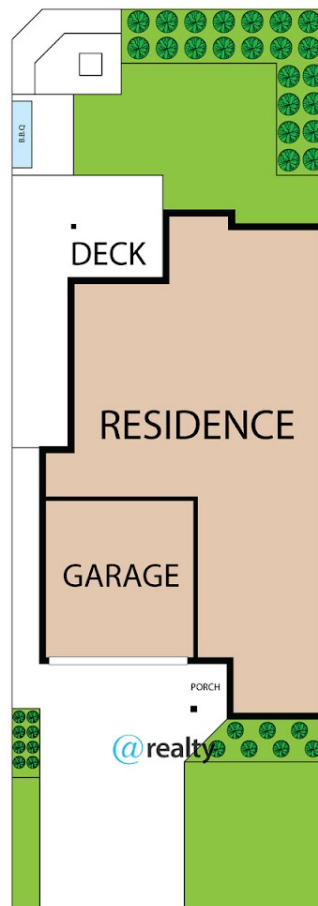
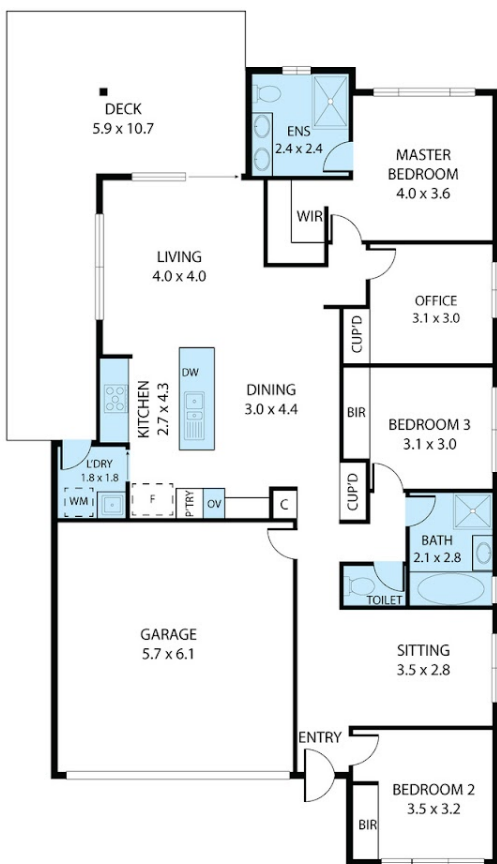
4 BED | 2 BATH | 2 CAR

PRICE:
\$830,000

OPEN FOR INSPECTION:
N/A



Ben Tafolo
0419260719
tafolo@atrealty.com.au
tafolorealty.com.au



23 Leven Street, Thornlands 4164

Whilst every attempt has been made to ensure the accuracy of the floor plan contained here, measurements of doors, windows, rooms and any other items are approximate and no responsibility is taken for any error, omission, or misstatement. This plan is for illustrative purposes only and should be used as such by any prospective purchaser.

Disclaimer: Please note this floor plan is for marketing purposes and is to be used as a guide only. All dimensions are estimates only and may not be exact measurements.