



SOLD

MASSIVE 346M2 ENTERTAINER'S DREAM BACKING DIRECTLY ONTO TRANQUIL PARKLANDS!!

If you could dream of a picture perfect opportunity to plant the family flag & start your exciting next chapter, would it be in a massive 2 level home offering a full 346m2 of family living only 30mins from the CBD?? Would it be in a home that offered amazing large family separation with 3 living spaces + 5 bedrooms & equipped with a to die for expansive master suite?? Would it be a home that offered an amazing new family lifestyle opportunity with a function sized pool and backing directly onto tranquil parklands all ready for you and the kids to set off on your next afternoon adventure?? Would it be in a home set in an ultra convenient location only 500m to Marketplace shopping and close to a selection of highly regarded schools??

Now you can make your dreams happen!!...You only live once!! The keys are waiting!!

Features include;

* Absolute entertainer's dream complete with a family sized pool & a full length entertaining deck all backing directly onto tranquil & private parklands!

- * A home that ticks every box!
- * Proud & commanding street presence
- * Family friendly & whisper quiet location
- * A home that offers a rare and amazing long term family living potential
- * Vacant and all ready for you and the family to just move in, unpack & enjoy!!

- * Sprawling 346m2 home with 3 separate living areas + a huge parent's retreat of a master suite!
- * Fantastic flow, size & separation for the growing family – an absolute must to put at the very top of your inspection list!
- * Ultra convenient gate at the rear fence allowing direct access for the kids to run amok at the park while you watch them from your entertaining area

- * Massive separate main living & dining spaces
- * Additional generous media room / 2nd family living

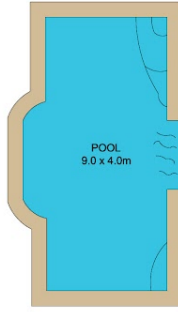
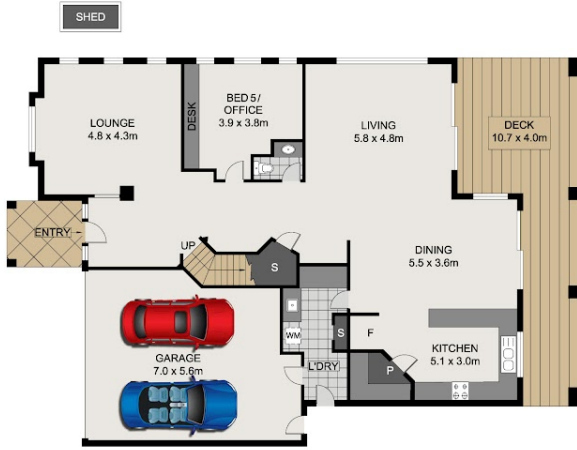
5 BED | 2 BATH | 2 CAR

PRICE:
\$990,000

OPEN FOR INSPECTION:
N/A



Patrick D'Arrigo
0447381869
pdarrigo@atrealty.com.au
www.atrealty.com.au



GROUND FLOOR

FIRST FLOOR



0 1 2 3m

Scale in metres, indicative only. Dimensions are approximate. All information contained herein is gathered from sources we believe to be reliable. However, we cannot guarantee its accuracy and interested persons should rely on their own enquiries.

INT : 272.34m²
 EXT : 36.11m²
 GARAGE/SHED : 36.96m²
 TOTAL : 345.41m²

16 Norland Street, Warner

Disclaimer: Please note this floor plan is for marketing purposes and is to be used as a guide only. All dimensions are estimates only and may not be exact measurements.