



SOLD

PRIVATE ACREAGE WITH DUAL LIVING

This unique and character filled home offers a very relaxing and peaceful setting, allowing you to enjoy the country lifestyle you've been searching for.

This is a 5 acre property of which approx 3 acres is fully fenced and relatively flat, while the remaining 2 acres is natural bushland and home to abundant wildlife.

The main level of the home consists of a nicely appointed open plan kitchen with a huge island bench and split level dining and living options, two bedrooms, study and the family bathroom.

The living area with its multiple glass sliding doors allow plenty of light in, opening onto the expansive back veranda, the perfect place to sit and relax at the end of the day or bbq get-together with family and friends.

The wooden staircase on the main level leads you up to the generously sized master bedroom, with large built in robe, ensuite and private spacious deck from where you can see the lights of Brisbane.

The lower level of the home has just been renovated and is perfect for dual living, offering two good sized bedrooms, spacious kitchen and living area, and a full bathroom.

It also has a separate access and parking.

This fabulous home is situated in a no through road in a quiet area of Tamborine, and is located within the catchment area for the award winning Tamborine Mountain Primary and High Schools, with the school bus pick up and drop off at the end of the street.

Main living level:

Split level dining and living options

Large glass sliding doors from main living and kitchen with views of the bushland

Well appointed kitchen with large island bench

Dishwasher, gas cooktop, and plenty of cupboard and pantry space

Two good sized bedrooms with built in robes

Family bathroom with both a shower and bath

Study

Timber flooring throughout

Slow combustion fire

Fans throughout

Upstairs level:

Large master bedroom with air-conditioning and ceiling fan

Ensuite and large built in wardrobe

5 BED | 3 BATH | 3 CAR

PRICE:

\$1,050,000

OPEN FOR INSPECTION:

N/A

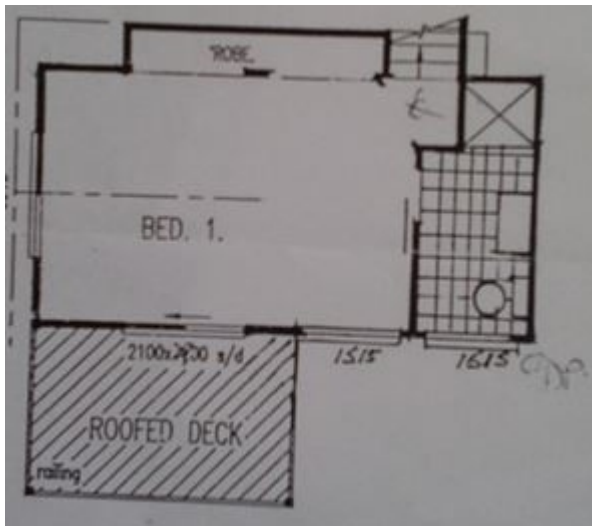


Debra Opie

0409210362

debraopie@atrealty.com.au

www.atrealty.com.au



Disclaimer: Please note this floor plan is for marketing purposes and is to be used as a guide only. All dimensions are estimates only and may not be exact measurements.