



SOLD

CONTRACT FALLEN OVER ! PRICE REDUCED TO SELL NOW ! DON'T WAIT ! THIS WILL SELL FAST !

FANTASTIC HINTERLAND & BROADWATER VIEWS FROM TOP FLOOR - FULLY FURNISHED 'ATRIUM RESORT' APARTMENT

You'll love the views from this Top - 6th floor, 2 bedroom, 2 bathroom, 2 car park apartment. This light filled apartment features an open plan living/dining area with direct access out to the large wraparound West facing balcony for the indoor/outdoor lifestyle that the Gold Coast is all about. Ideal for entertaining - just sit back, relax with a glass of champagne and enjoy your Hinterland and sunset views. The modern white kitchen is fully equipped with white appliances and tiled splash backs.

The Master bedroom has views to The Hinterland and The Broadwater and has direct access to a 2nd private balcony to enjoy your early morning coffee and the sunrise. Double mirror fronted, built-in wardrobes, ceiling fans and an en-suite bathroom with windows for added cross ventilation. Bedroom 2 is bright and light with fan and built in robes.

The perfect apartment for home or investment. Stay when it suits you and holiday let when you want to or live in or rent out permanently - the choice is yours. The apartment comes fully furnished so you can savour the opportunity to live the holiday lifestyle straight away and enjoy all the benefits of owning an investment on this popular waterfront location.

Apartment Features Include:

- Fully equipped kitchen including all appliances
- Master bedroom + Ensuite
- Bedroom 2 - 2 x single beds
- Family bathroom with large Spa bath
- European laundry
- 2 x Large entertainers balconies
- Air-conditioning to main living area, fans in both bedrooms
- 2 secure underground Parking spaces - Tandem

2 BED | 2 BATH | 2 CAR

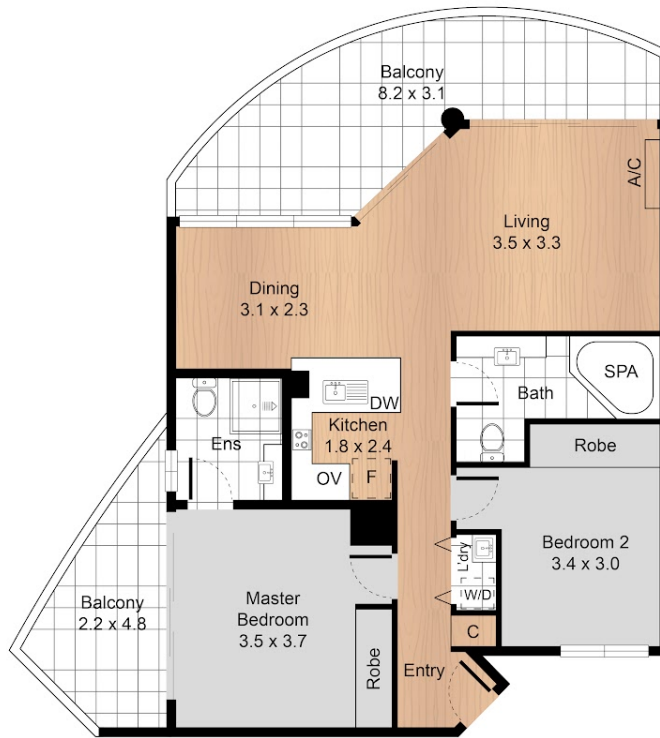
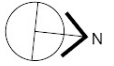
PRICE:
\$499,000

OPEN FOR INSPECTION:
N/A



Francine Setchell
0408143464
francine@atrealty.com.au
www.atrealty.com.au

FLOOR PLAN



**Unit 6A, 510 Marine Parade,
Biggera Waters QLD 4216**

 2 Bed  2 Bath

Internal : 71m²
External: 22m²



All information contained herein is gathered from our 3D scanned tours via Matterport. Whilst the 3D scanning technology is very accurate we cannot guarantee its accuracy and interested parties should rely on their own enquiries.

Disclaimer: Please note this floor plan is for marketing purposes and is to be used as a guide only. All dimensions are estimates only and may not be exact measurements.

Francine Setchell
0408143464
francine@atrealty.com.au
www.atrealty.com.au

