

9/83 BEERWAH PDE, BEERWAH, QLD, 4519



**SOLD**

## SPACIOUS, SECURE TOWNHOUSE LIVING

Located in the very smart Casa Mia complex offers Spacious living with three bedrooms and three bathrooms.

Security is offered with the coded gate, and you enter either via your front door or remote control lock up garage. Only 10 buildings in this well maintained complex. Inground swimming pool for the exclusive use of the owners and their guests.

Enter either from your front door into the tiled lounge or through the double car garage. Living on the ground floor with the spacious private courtyard towards the rear of the property, three discrete segments to the courtyard, which will lend itself to landscaping to suit your personal styling. Perfect for a second living area and BBQ as well as a pet friendly enclosure. Pets are by permission of the body corp but appear to be welcome.

Upstairs for living. You alight the stairs to a bedroom foyer area which leads to the spacious master bedroom, with ensuite and separate walk-in robe. The positioning perfect for a young family or possible office area for the increasingly popular working from home situation.

Beerwah has a thriving business center, and this property is positioned well to access, shops, schools, and the rail to Brisbane

Close By Facilities:

- Beerwah Railway Station 650m
- Beerwah State High School 800m
- Beerwah Aldi 900m
- Beerwah Woolworths 1.4km
- Beerwah Sports Ground 1.5k
- Beerwah State School 3.2k

Because of the secure gate, inspections are by appointment.

**3 BED | 3 BATH | 2 CAR**

**PRICE:**  
\$550,000

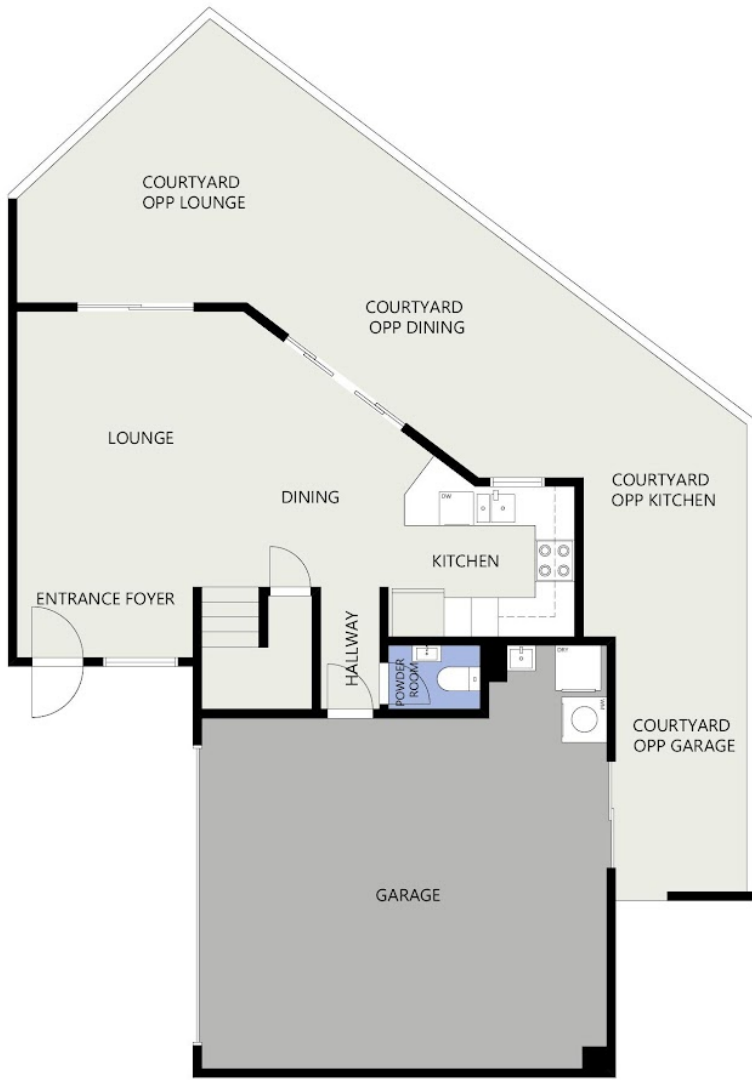
**OPEN FOR INSPECTION:**  
N/A



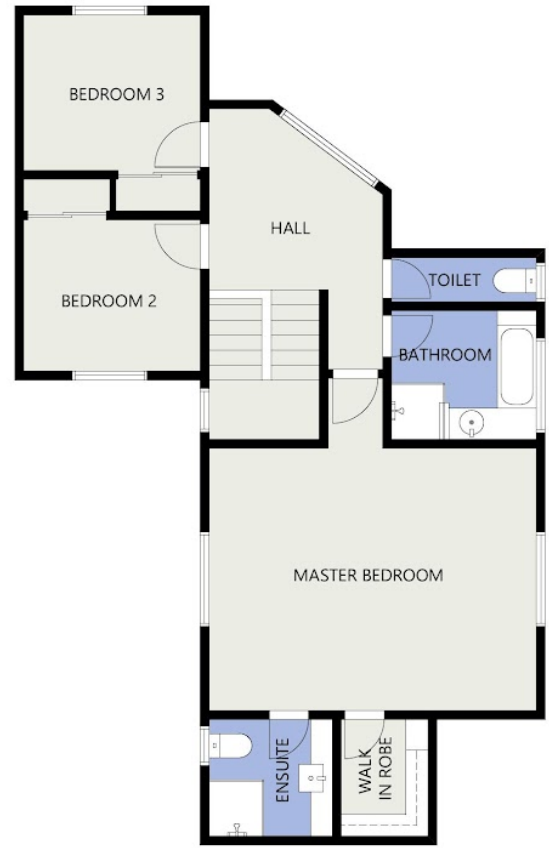
**Ray Scarfe**  
**0414943269**

ray.scarfe@atrealty.com.au

[www.atrealty.com.au](http://www.atrealty.com.au)



[ ]Ground floor



[ ]First floor



Unit 9, 83 Beerwah Pde,  
Beerwah Qld 4519

Floor plan is provided as indicative layout only. Measurements are not available, floor plan is not to scale. No guarantees



Disclaimer: Please note this floor plan is for marketing purposes and is to be used as a guide only. All dimensions are estimates only and may not be exact measurements.