



# FOR SALE

## UNDER CONTRACT - OPEN HOUSE CANCELLED!

On the market for the first time in over 50 years, this lovingly-maintained 1960s home with pool and garage features a flowing flexible floorplan with room to update for a contemporary lifestyle in this peaceful cul-de-sac location. Set in a family-friendly residential precinct, it's just around the corner from parks, local shops, buses, and minutes to primary & high schools, Carlingford Court mall, and Epping business & rail.

The blonde brick and tile residence offers plenty of space for family living and entertaining with five double bedrooms, a light-filled lounge with a stone feature in the living area, separate dining, casual living, and an eat-in kitchen opening to a sun-soaked deck. The front gardens have a semi-circular driveway to LUG, and the East-facing rear garden includes a fully-fenced pool & lawn area with access to a lower level rumpus room or studio with laundry and WC.

Bright and airy with fresh paint, high ceilings, wide picture windows, timber, and slate-tiled floors, it's ready to move straight in with options to renovate, reconfigure or redevelop (STCA) on the 758.8 sqm block to create your dream family future.

Disclaimer: @realty believes that this information is correct but it does not warrant or guarantee its accuracy. Certain information has been obtained from external sources. All interested parties should make and rely upon their own inquiries in order to determine whether or not this information is in fact accurate. We do not accept any responsibility to any person for its accuracy and do no more than pass it on. Figures may be subject to change without notice.

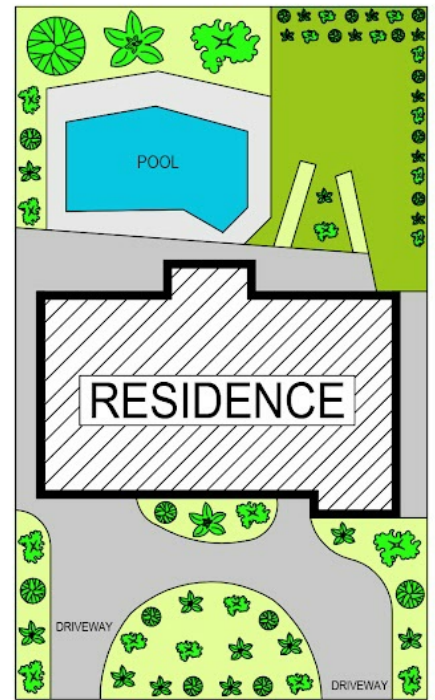
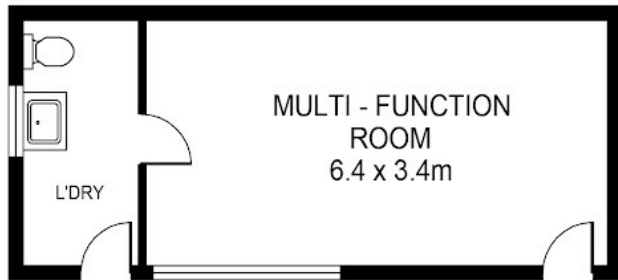
5 BED | 2 BATH | 4 CAR

PRICE:  
Offers Invited

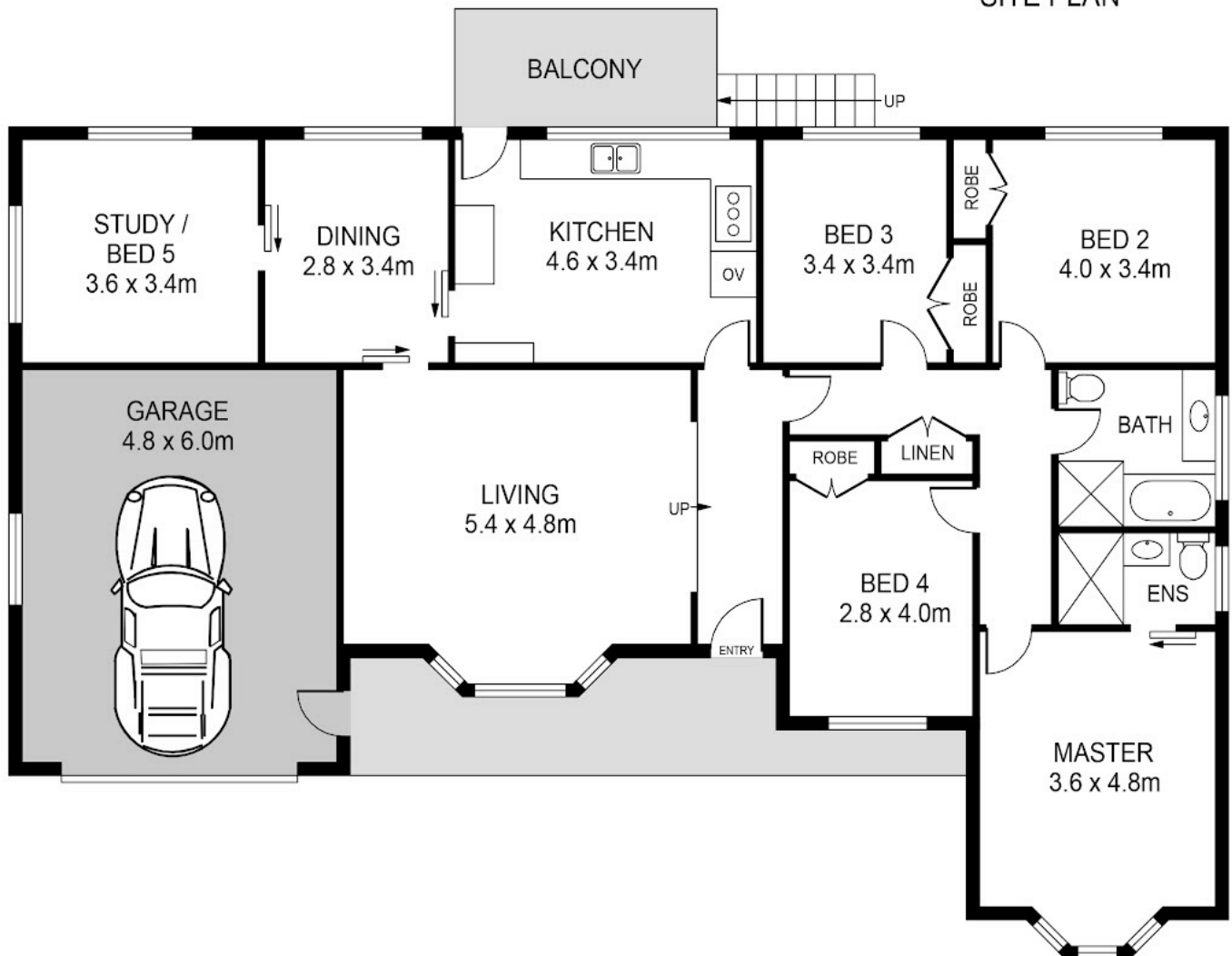
OPEN FOR INSPECTION:  
N/A



**Ning Widjaja**  
0416197919  
ning@atrealty.com.au  
[www.atrealty.com.au](http://www.atrealty.com.au)



SITE PLAN



Disclaimer: Please note this floor plan is for marketing purposes and is to be used as a guide only. All dimensions are estimates only and may not be exact measurements.

DISCLAIMER:

PLANS SHOWN ARE FOR MARKETING PURPOSES ONLY, ALL DIMENSIONS ARE APPROXIMATE AND NOT TO SCALE. THEY ARE SUBJECT TO ERRORS AND INACCURACIES AND NO LIABILITY WILL BE ACCEPTED. INTERESTED PARTIES SHOULD MAKE THEIR OWN INQUIRIES.

Ning Widjaja

0416197919

ning@atrealty.com.au

[www.atrealty.com.au](http://www.atrealty.com.au)

