



SOLD

**VACANT AND READY TO MOVE STRAIGHT IN !
SO QUIET - TUCKED AWAY AT THE REAR OF
THE COMPLEX.**

Only 16 Townhouses in the secure Broni Estate.

Centrally located, low maintenance, Mediterranean style 3 bedroom, 2.5 bathroom townhouse, offering great value for an owner occupier or investors alike.

The ground floor has an East facing kitchen with granite bench-tops and an open plan layout. The dual aspect living/dining area has patio doors to the North and West so is lovely and bright and opens out to the private courtyard garden with space for a BBQ and outdoor entertaining.

Upstairs has an oversized Master bedroom with A/C, large walk-in robe and a generous ensuite with spa bath, separate shower and stone bench top. Bedroom 2 has Juliet balcony, double built-in robes and direct access to a 2-way bathroom. Bedroom 3 has double built-in mirrored robes and both have ceiling fans. The landing offers space for a study or teenage retreat.

The gated complex offers security as well as a pool and BBQ area with gardens maintained by great on-site managers.

Everything you could need is close by - Woolworths, cafes and restaurants across the road, and a short stroll to Ashmore Primary School. Gold Coast's beaches, Southport CBD, Griffith University, Gold Coast Hospital, Pindara and Gold Coast Private hospitals are just a short drive away.

Property Features:

- * Open plan kitchen/lounge/dining
- * Downstairs powder room and laundry
- * Reverse cycle split system A/C and ceiling fans
- * Shared pool and BBQ area
- * Gated and secure complex
- * Double car garage with internal access - plus extra car space

3 BED | 3 BATH | 3 CAR

PRICE:
\$620,000

OPEN FOR INSPECTION:
N/A

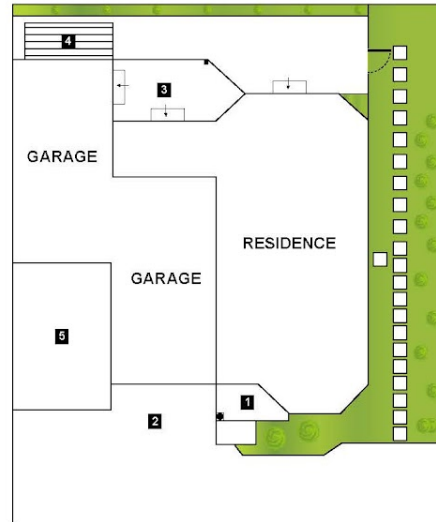
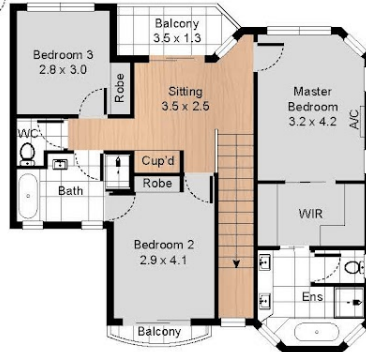


Francine Setchell
0408143464
francine@atrealty.com.au
www.atrealty.com.au

GROUND FLOOR

FIRST FLOOR

SITE PLAN



LEGEND

- 1. Porch
- 2. Driveway
- 3. Courtyard
- 4. Clothes Line
- 5. Car Parking

**Unit 6, 141 Cotlew Street,
Ashmore QLD 4214**

3 Car 3 Bed 2.5 Bath

Internal: 169m²
External: 34m²



All information contained herein is gathered from our 3D scanned tours via Matterport. Whilst the 3D scanning technology is very accurate we cannot guarantee its accuracy and interested parties should rely on their own enquiries.

Disclaimer: Please note this floor plan is for marketing purposes and is to be used as a guide only. All dimensions are estimates only and may not be exact measurements.

