



SOLD

FABULOUS LOCATION WITH AMPLE WALK WAYS THROUGH THE LUSH PARKS AND ALONG THE WATERWAYS!

Brightwater at Mountain Creek offers modern relaxed living ... clean and green environment ... charming local village for easy shopping – grabbing a coffee with friends while being close to quality schools ... 5 quality schools within 3 kms ... and access to many and varied sporting facilities and motorway.

Your chance - high demand for quality low set brick homes meandering through the waterways - call Kath to organise your time to view - don't dally be quick!!

You will love this modern, beautifully presented craftsman built home 6 years young, in a quiet crescent.

Every room is spacious, this home is in immaculate condition with air conditioning.

Featuring

- low set 3 bedroom/2 bathroom/2 car residence
- remote pane lift garage door
- air conditioning
- blinds throughout - tiled living areas with carpeted bedrooms
- ceiling fans in bedrooms & main living
- NBN connection
- insulation to roofing area and bonded blanket
- 3 spacious bedrooms - 3 with built-ins
- master bedroom - walk-in robe & ensuite
- main bathroom with bath and separate shower
- separate toilet and good laundry
- spacious open plan living, dining and kitchen
- easy access pantry - extra drawers & room for appliances
- excellent stone bench space for kitchen preparation
- living area opens to roofed patio and garden.
- garden shed at the rear
- lush green lawn and easy care gardens

SPACIOUSNESS & PEACEFUL SURROUNDINGS – STROLL ALONG THE WATERWAYS.

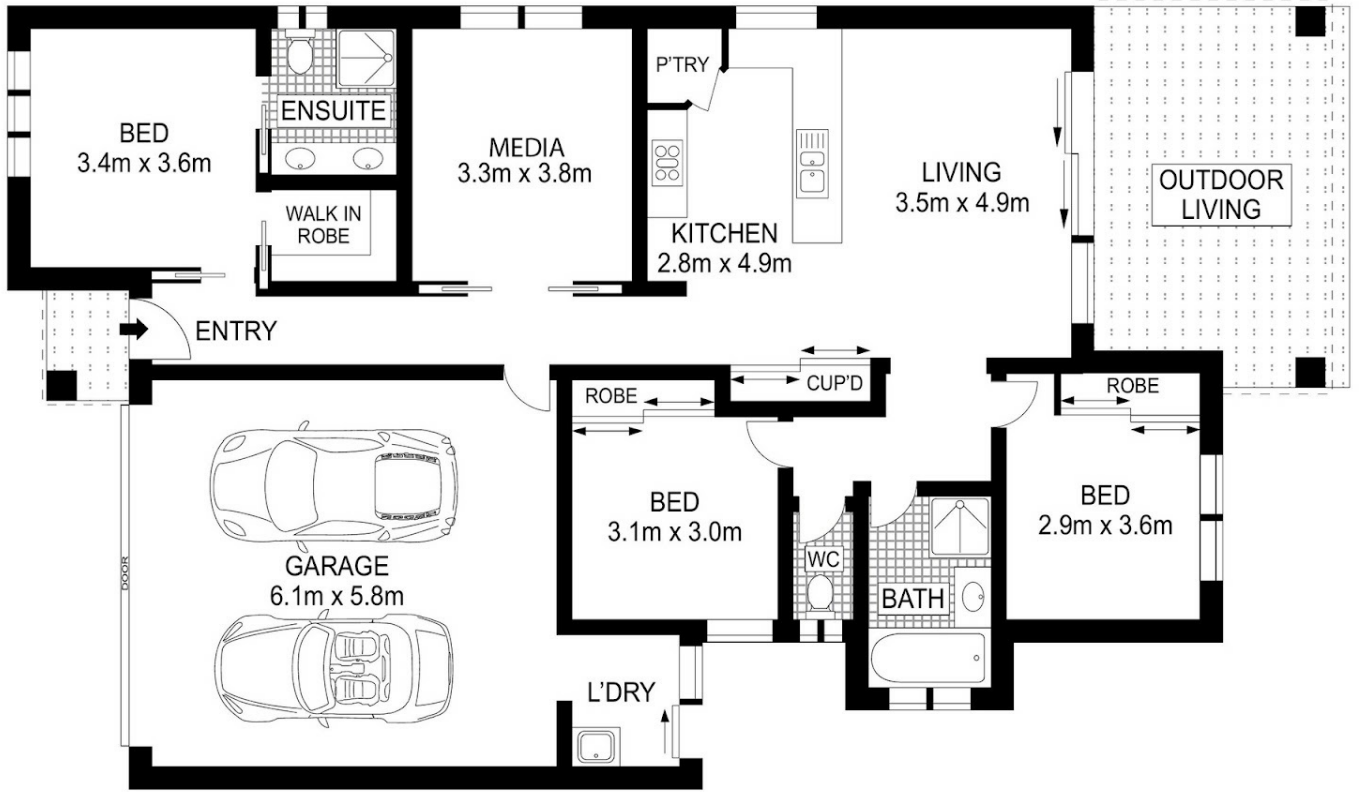
3 BED | 2 BATH | 2 CAR

PRICE:
\$785,000

OPEN FOR INSPECTION:
N/A



Kath Malmstedt
0418193312
kathmalmstedt@atrealty.com.au
www.atrealty.com.au



INT: 158 m²
EXT: 21 m²

Scale in metres. Indicative only. Dimensions are approximate. All information contained herein is gathered from sources we believe to be reliable. However, we cannot guarantee its accuracy and interested persons should rely on their own enquiries.

26 Great Keppel Crescent, Mountain Creek



Disclaimer: Please note this floor plan is for marketing purposes and is to be used as a guide only. All dimensions are estimates only and may not be exact measurements.

Kath Malmstedt
0418193312
kathmalmstedt@atrealty.com.au
www.atrealty.com.au

