

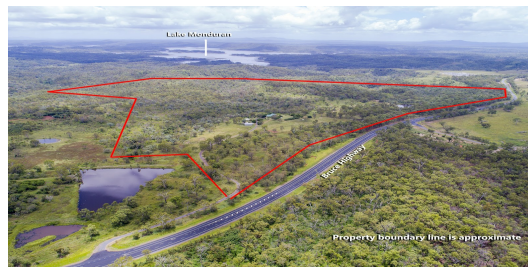


# Sold

5  | 3  | 6 

36618 BRUCE HIGHWAY, TAKILBERAN, QLD, 4671



## "REDRIDGE" BEAUTIFUL FAMILY HOME ON 338 LIFESTYLE ACRES

If you have been looking for that beautiful dream home, in a very central location on the QLD coast, than look no further. This fully renovated classic Federation Queenslander is surrounded by 338 acres ready for a new family to create memories. The charming homestead comprises of 5x spacious bedrooms 3x bathrooms with two large entertainment decks over looking the beautiful manicured gardens and fruit trees.

With Lake Monduran boat ramp just minutes from this property, Barramundi & Bass fishing is at your doorstep. Under an hour to the beach, located on the Bruce Highway, 19km from Gin Gin, this property really does offer the best of both worlds. The main home offers dual living potential with two homes joined by 80 metres of covered deck. Both of the homes boast polished floors and have been recently renovated, ready for you to move straight in. There is also a separate accommodation unit for guests or a caretaker. This property offers great potential for a B&B or glamping business (STCA). Water will never be an issue, with a drinkable bore and 2 dams for stock or growing some fruit and veggies.

Special Features include -

- 5x spacious bedrooms all fitted with ceiling fans, fully screened.
- 3x modern bathrooms with individual brass fittings & more
- Modern & functional Kitchen, fitted with 2 pac cabinetry & stainless steel appliances throughout.
- Large gas cooktop with electric oven
- Polished hardwood floors throughout

PRICE:  
\$1,320,000

OPEN FOR INSPECTION:  
N/A



## Ty Dan // 0437226831

ty@widebayregionalestate.com.au // www.widebayregionalestate.com.au