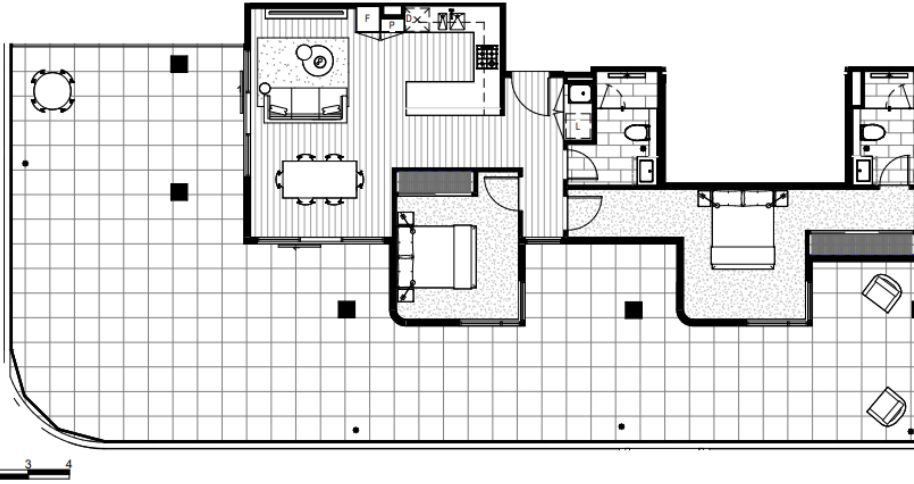


S I E R R A

Hawthorn



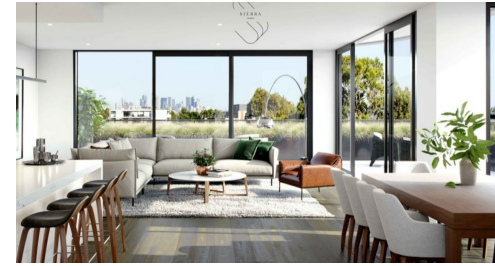
Apartment 516B

Bedroom	2	Carpark	1
Bathroom	2	Internal Area	82sqm
Powder Room	0	External Area	120sqm
Study	0	Total Area	202sqm

Floor 5



Disclaimer: On the request of JD Group, air-conditioner units located on balconies are not shown on marketing drawings. Purchasers to review contract of sale for air-conditioner condenser unit size and locations. Please note that the architectural plans were produced prior to completion of construction and are illustrative only. Changes may be made during construction. Dimensions, fix layouts, finishes and specifications are subject to change without notice in accordance with the provisions of the Contract of Sale. Any furniture specified is not included with any sale and should not be taken to indicate the final position of power points, TV connection points and the like. Purchasers must rely on their own enquiries. Plans and buildheads necessary for services and structure are not depicted.



FOR SALE

HAWTHORN SIERRA - NEW APARTMENTS

Positioned in the heart of Melbourne's most prestigious suburbs Hawthorn!

The unique 'S' shaped!

The bold architectural statement goes beyond aesthetics to create a tremendous sense of space!

Hotel style amenities : 22m swimming pool, gymnasium, sauna, steam room and rooftop terrace which vast views of the Melbourne city skylines.

Transport options, restaurants, cafes and boutiques at your door step.

2 BED | 2 BATH | 1 CAR

PRICE:

\$1,200,000

OPEN FOR INSPECTION:

N/A



Roger Nissanka

0406271004

roger@atrealty.com.au

rogers-realestate.com.au