



FOR SALE

RELISH THE HIGH LIFE IN THIS PRESTIGIOUS FAMILY HOME WITH SWEEPING VIEWS.

Welcome to 4 Hillary Circuit, Pacific Pines. Without a doubt, this is one of Pacific Pines most impressive property's to come to market.

Situated in an elevated and highly-sought after pocket of Pacific Pines, this architecturally designed family home is tailor made for families seeking a sprawling, luxurious and complete abode.

Set on a generous 1128m², this home offers a lifestyle that is second to none in one of the northern Gold Coast's most desirable suburbs.

Beyond the statement oversized oak timber front door is an impressive entry foyer - beautifully tiled with soaring ceilings throughout and a sumptuous timber staircase leading to the first floor, leading out to the enclosed entertaining area which offers breathtaking 180 degree skyline views, the perfect spot to unwind and entertain with friends.

Five bedrooms with the potential for a sixth all stunningly appointed, with an opulent master retreat enjoying access to a private ensuite and walk-in wardrobe.

Additional Property Features:

- Gourmet kitchen complete with stone bench tops, SMEG appliances and plenty of storage.
- 5 bedrooms plus large study or 6th bedroom.
- 2 bathrooms plus powder room.
- 4 separate living zones.
- Complete home cinema.
- Rumpus room/ home office.
- Large 12x4m resort-style saltwater swimming pool.
- Ducted air conditioning.
- Double garage with separate workshop with parking for 3 cars.
- Huge upstairs entertaining area.
- New electrical, New roof with solar panels.
- Large home of grand scale 365m².

5 BED | 2 BATH | 3 CAR

PRICE:

Offers Above \$1,380,000

OPEN FOR INSPECTION:

N/A

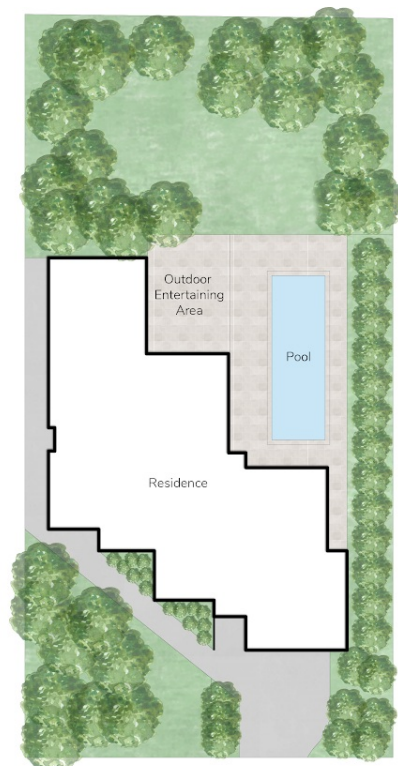


Jordan Marshall

0452225644

jordanmarshall@atrealty.com.au

www.atrealty.com.au



4 HILLARY CIRCUIT, PACIFIC PINES

This floor plan is for marketing purposes only. Dimensions and layout are approximate. Mountfort Media gives no guarantee or warranty over the accuracy of this plan.


 INT: 329 sqm
 EXT: 36 sqm
 TOTAL: 365 sqm

Disclaimer: Please note this floor plan is for marketing purposes and is to be used as a guide only. All dimensions are estimates only and may not be exact measurements.