



## FOR SALE

### LARGE THREE BEDROOM TOWNHOUSE FOR SALE -DON'T MISSED THIS OPPORTUNITY.

Lakeside on Varsity is one of the most sought after complexes in Varsity Lakes with its amazing position across from Lake Orr and next to Varsity Primary School.

#### Property Features

- Main bedroom boasts ensuite, built in cupboards and ceiling fan
- Two good sized bedrooms both with built in cupboards
- Spacious main bathroom with bath tub
- Open plan living and dining
- Well appointed modern kitchen with ample storage and bench space
- Air conditioned living and dining
- Single automatic lock up garage with internal access
- Fully fenced private back yard

#### Complex Features

- Sparkling in ground swimming pool, spa and 2 BBQ areas
- Plenty of visitor parking
- Well maintained gardens and lawns
- Security gated with onsite management
- Complex access off Christine Avenue and Bridgewater Drive
- Pet friendly complex upon application

Annual Rates per year : \$1,950 approx.

Annual Water per quarter: \$450 approx.

Body Corp: \$95 p/w approx.

Currently rented for \$540.00 p/w

Lease end : 15/08/2022

Lakeside on Varsity is one of the most highly sought after complexes in Varsity Lakes. This home is perfectly located with everything at your doorstep. Just across the road you have Aldi, coffee shop, hairdresser and Varsity College Primary. Only a short stroll to the beautiful walking tracks of Lake Orr, Bond University, Varsity College Secondary and Varsity Lakes Train Station. Only 5 minutes drive to Robina Town Centre, Cbus Super Stadium and only 10 minutes to the

3 BED | 2 BATH | 2 CAR

PRICE:  
639,000+

OPEN FOR INSPECTION:  
N/A

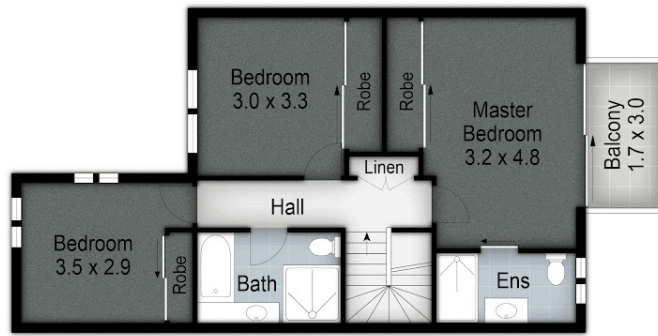


**Agnes Chan**

**0421666977**

[agnes@atrealty.com.au](mailto:agnes@atrealty.com.au)

[www.atrealty.com.au](http://www.atrealty.com.au)



70/302 Christine Avenue, Varsity Lakes

Internal: 148 m<sup>2</sup> | External: 15 m<sup>2</sup> | Approx Total: 163 m<sup>2</sup>

Agnes Chan  
0421 666 977

@realty

Plans shown are only indicative of layout. Dimensions are approximate.

Disclaimer: Please note this floor plan is for marketing purposes and is to be used as a guide only. All dimensions are estimates only and may not be exact measurements.

Agnes Chan  
0421666977  
agnes@atrealty.com.au  
[www.atrealty.com.au](http://www.atrealty.com.au)

@realty