



**SOLD**

## FAMILY HOME PLUS RETREAT/GRANNY FLAT – LIVE IN, RENT OUT OR BOTH!

This 835m<sup>2</sup> flat block of land contains the main house plus a retreat / granny flat and generous 6m x 6m shed/workshop while leaving ample space for children or pets to enjoy!

Main house – Heavily updated, 1971 built, family sized home with 3 bedrooms and two living areas. A secure, gated entry leads to the decked porch overlooking the picturesque lawn and front garden. The main house has built in robes to all bedrooms providing plenty of storage while the kitchen features stainless steel appliances, new dishwasher, 900mm oven with gas cooktop, plenty of counter space and a pantry.

The sunken lounge, with vaulted ceiling, provides a cosy and inviting space to enjoy the warmth of the gas fire while enjoying a good movie. NBN is already in place to allow streaming from your favourite provider. Additional living space is provided by the large enclosed sunroom perfectly suited to a rumpus or games room.

A fully updated bathroom and European styled laundry complete the wet areas of the home. Ducted evaporative air conditioning throughout compliments the other creature comforts of this family home with plenty of parking available in the double length carport.

The self-contained retreat/granny flat offers a single bedroom, combined bath/toilet/laundry together with kitchen, lounge area & includes reverse cycle, split system, air conditioning for year-round comfort.

Located within walking distance to the beach, public transport, local parks & playgrounds, Seaford Central shopping centre and schools this property is definitely family friendly!

Previously rented at \$490 per week – this property could be a solid earner in this tough rental climate.

A frontage of 18.59m offers potential future development options STCC.

With so many options, this family home will not last long!

4 BED | 2 BATH | 2 CAR

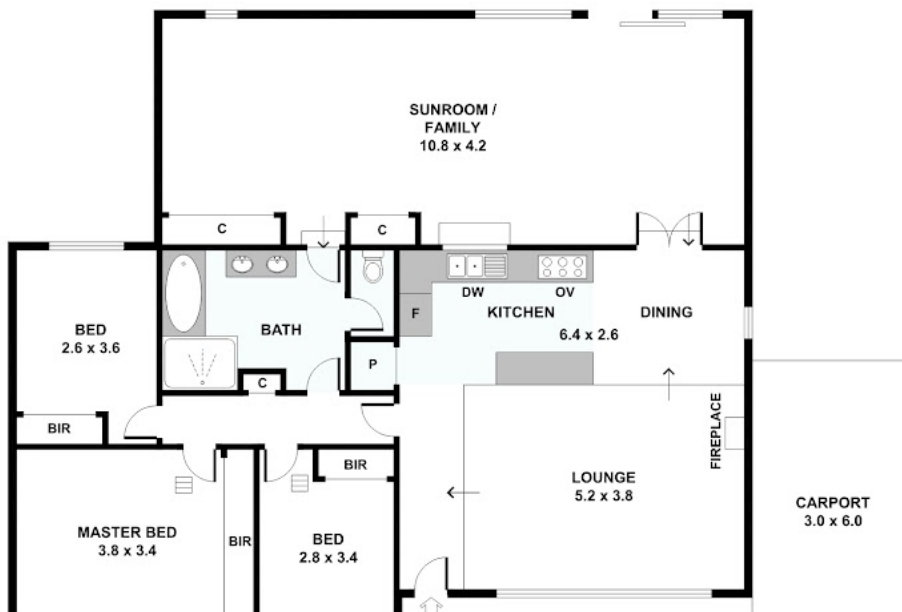
PRICE:  
\$607,500

OPEN FOR INSPECTION:  
N/A



**Mark Davies**  
**0403160447**  
markdaves@atrealty.com.au  
[www.atrealty.com.au](http://www.atrealty.com.au)  
RLA: 269823

# 5 Martha Street, Seaford



Disclaimer: Please note this floor plan is for marketing purposes and is to be used as a guide only. All dimensions are estimates only and may not be exact measurements.