



FOR SALE

SOLD! LARGE HOME ON 2 LOTS NEAR GOLF COURSE!

SOLD!

Ladies and gentlemen, we are excited to present to you this outstanding lifestyle opportunity!

Situated on a large and level 1,012m² block with 2 separate lots is this spacious, high-quality home.

The gardens and grounds are low-maintenance, immaculately presented and fully fenced and gated.

The proportions of the home are very large throughout, and it incorporates a host of great features:

- * Spacious and separate lounge, dining and meals areas
- * A huge master bedroom with walk-in, air-con + ensuite
- * 2 other very large built-in bedrooms + a separate office
- * A sizeable 'eat-in' kitchen in the centre of the residence
- * Wide & shaded verandahs that wrap the front of house
- * Large 2-car garage/workshop + a drive-through canopy
- * High ceilings and loads of space throughout the home
- * Elevated, private and whisper-quiet cul-de-sac location
- * 2 minute walk (or a 9-iron!) to Redland Bay Golf Course
- * So close to the water and to local parks / walking trails
- * Scope to raise to 2 levels and potentially see the water
- * 2 lots means that 2 new homes could be constructed
- * Great lifestyle or renovation or development potential
- * Only 40 min to Brisbane CBD or 50 min to Gold Coast
- * Just minutes to Redland Bay's best boating / fishing!

Folks, homes of this size, location, calibre and quality are very rare and are highly sought-after.

So don't miss out! Call now, buy today and enjoy your future. Contact Ben for price and viewing.

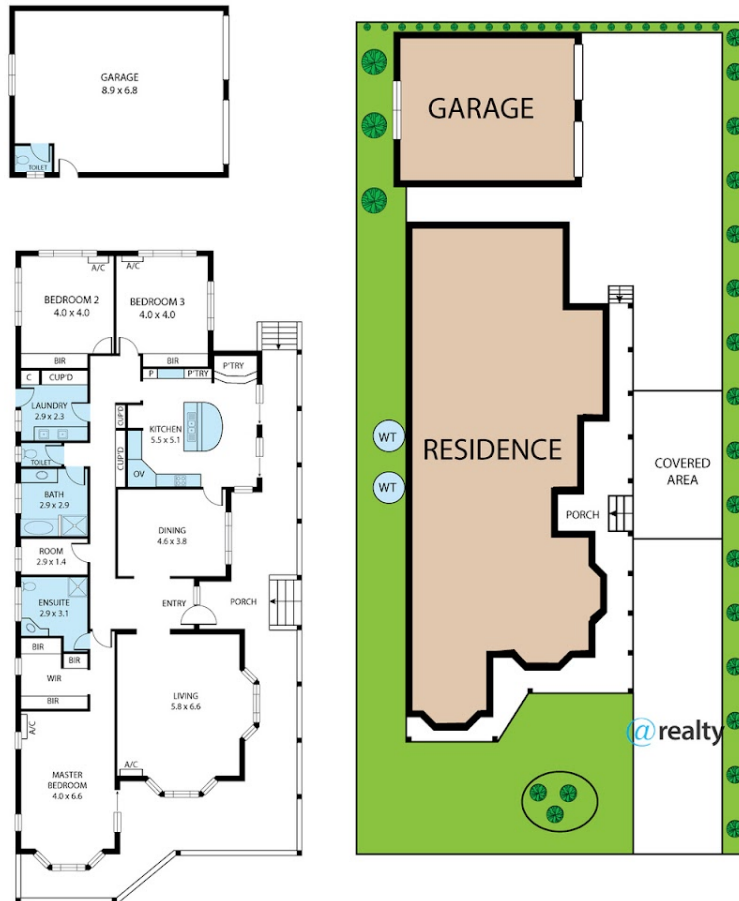
3 BED | 2 BATH | 4 CAR

PRICE:
SOLD!

OPEN FOR INSPECTION:
N/A



Ben Tafolo
0419260719
tafolo@atrealty.com.au
teamtafolo.com.au



11-13 Cane Street, Redland Bay 4165

Whilst every attempt has been made to ensure the accuracy of the floor plan contained here, measurements of doors, windows, rooms and any other items are approximate and no responsibility is taken for any error, omission, or misstatement. This plan is for illustrative purposes only and should be used as such by any prospective purchaser.

Disclaimer: Please note this floor plan is for marketing purposes and is to be used as a guide only. All dimensions are estimates only and may not be exact measurements.