



SOLD

LOCATION LOCATION - DON'T WORRY ABOUT THE CAR WHEN YOU LIVE HERE !!

This beautiful partially renovated apartment is located at the mouth of the Tweed River with views over Leticia Spit, Cook Island, and Durnbah Beach. From the moment you walk in you will be drawn to the views of the Ocean, where you are often lucky enough to watch whales breaching or the dolphins teaching their calves.

This highly sought after building that can never be built out is waiting for an astute buyer to come along and call it home.

KEY FEATURES:

- Expansive open plan living, dining, and kitchen
- Master bedroom with walk in robes, and ensuite
- Second bedroom with built in robes
- main bathroom & separate laundry
- Wrap around balcony
- Lift service to each floor that can only be accessed with security
- Secure basement for (1) vehicle

FACILITY FEATURES:

- Large swimming pool with heated Spa
- 2 Saunas - toilets - showers
- Full size tennis court
- BBQ area with kitchen facilities
- On site Managers
- Immaculate grounds
- Reception area
- Security Entrance with video feed direct to the apartment

DETAILS:

- Body Corporate \$151.40 per week (includes water usage, building insurance, all maintenance around the building)
- Rates \$634.66per quarter

2 BED | 2 BATH | 1 CAR

PRICE:
\$1,450,000

OPEN FOR INSPECTION:
N/A

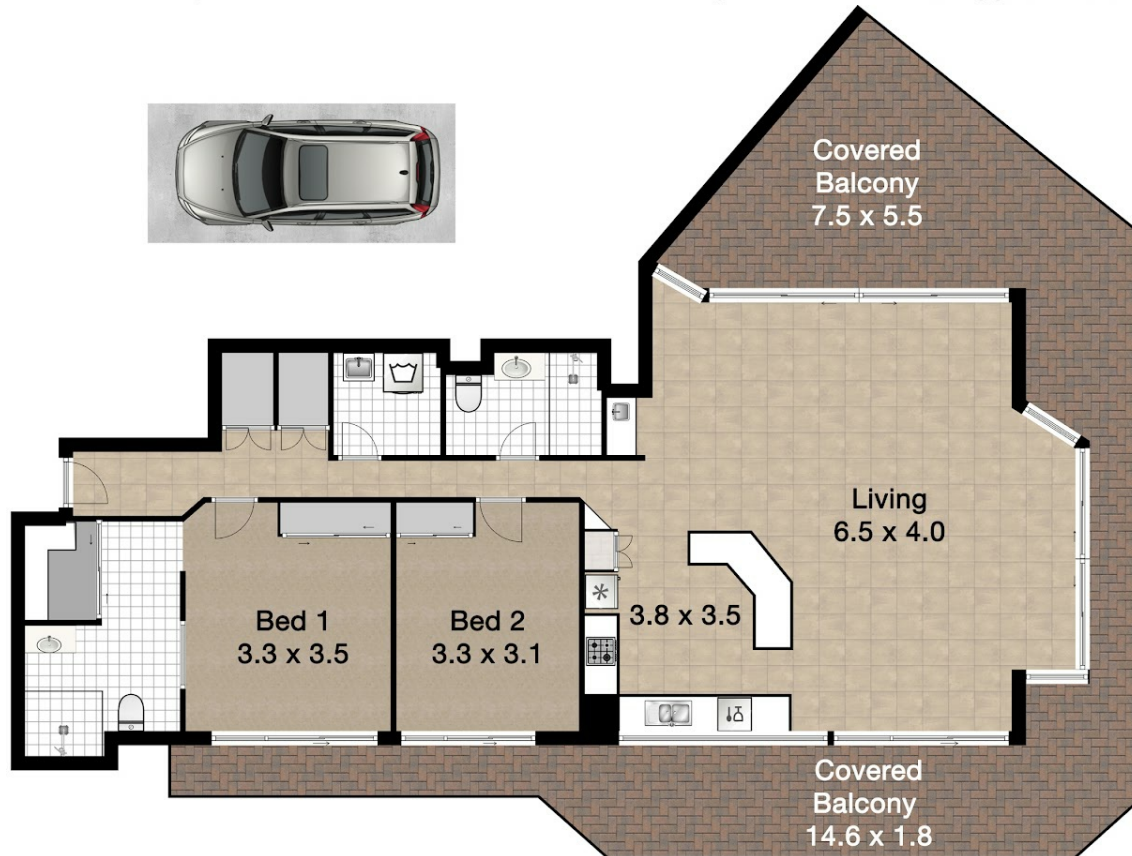


Sharon Smythe
0412195500
sharonsmythe@atrealty.com.au
www.atrealty.com.au

Unit 503 - 53 Bay St, Tweed Heads



2 Bed - 2 Bath - 1 Carparks - Internal Floor Area 129m² - Balcony Area 45m² - Total Approximate Floor Area 174m²



Whilst every attempt has been made to ensure the accuracy of the floor plan, measurements of doors, windows, rooms and any other items are approximate and no responsibility is taken for any error, omission or misstatement. This plan is for illustrative purposes only and should be used as such by any prospective purchaser.

Disclaimer: Please note this floor plan is for marketing purposes and is to be used as a guide only. All dimensions are estimates only and may not be exact measurements.