



SOLD

THIS FAMILY HOME IS YOUR OPPORTUNITY TO ENTER THE GROWING QLD MARKET!

Proudly presenting this superb family home - immaculately maintained on an elevated, fully fenced 600m² block in a popular pocket of Petrie close to quality schools, parks, and shops.

Entering this stunning family home you will fall in love with everything it has to offer! Boasting 4 large bedrooms, 2 bathrooms, 2 car garage and a thoughtfully designed open plan layout leading to your very own private patio.

If you're into a peaceful, leafy lifestyle we have found the home for you! Enjoy waking up to the calming sounds of nature from this elevated and peaceful setting with uninterrupted views of the neighbouring nature reserve.

Potential rental income: \$550 - \$580 pw

PROPERTY FEATURES:

- 600m² elevated block
- Large master bedroom featuring BIR, air conditioning & ensuite
- 3 additional bedrooms with BIR & fans
- Modern kitchen featuring stone benches, dishwasher & ample storage
- Open plan living & dining featuring air conditioning
- Separate laundry
- Large patio area
- Double Lock Up Garage
- Dog friendly fully fenced yard
- Low maintenance landscaping.
- & so much more...

LOCATION:

- 14 mins to Bruce Highway
- 5 mins to Petrie train station
- 4 mins to Petrie Woolworths & assorted shops
- 5 mins to USC Moreton Bay campus

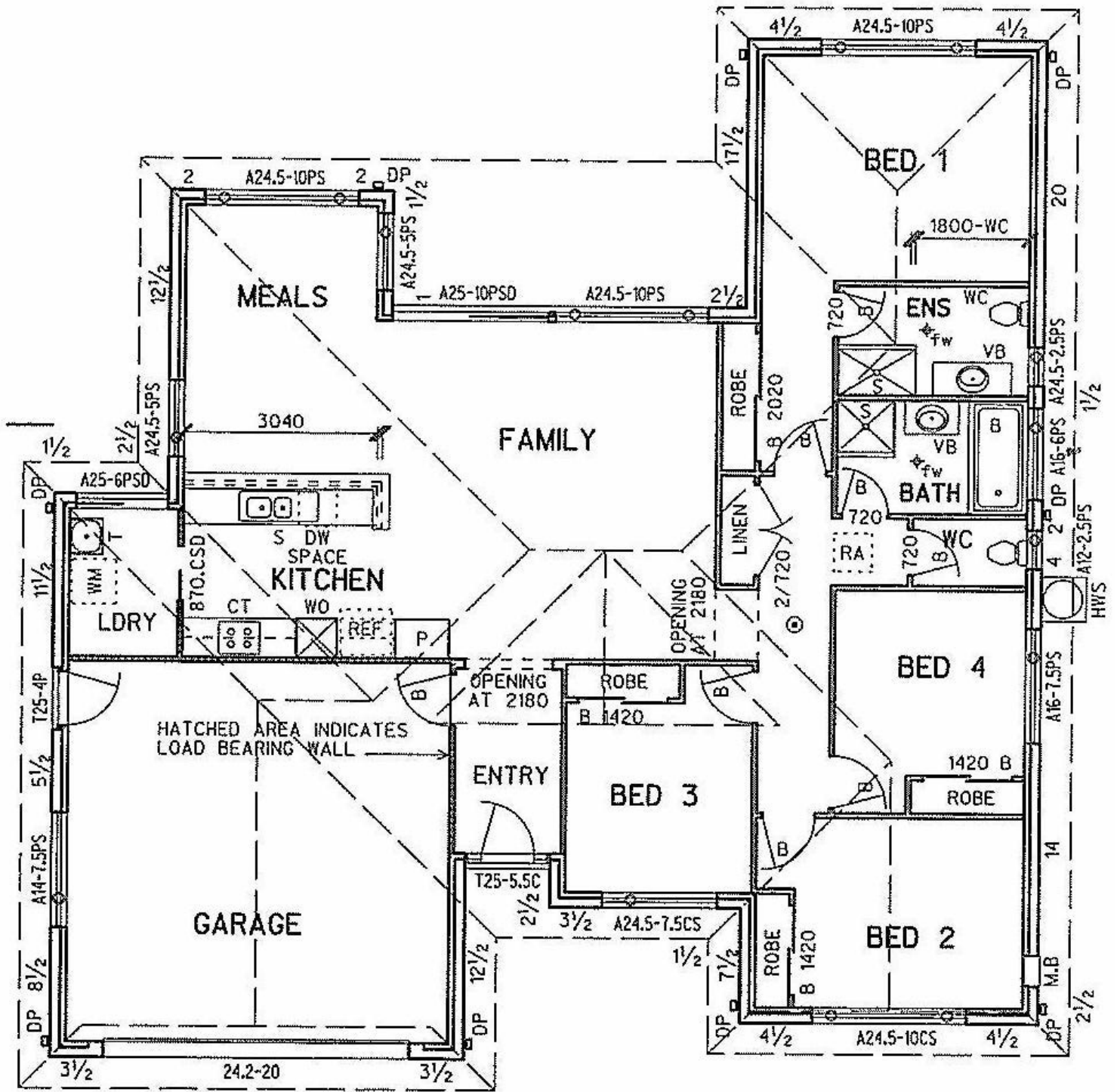
4 BED | 2 BATH | 2 CAR

PRICE:
\$750,000

OPEN FOR INSPECTION:
N/A



Mitchell Younger
0488458887
mitchell.younger@atrealty.com.au
www.atrealty.com.au



Disclaimer: Please note this floor plan is for marketing purposes and is to be used as a guide only. All dimensions are estimates only and may not be exact measurements.