



SOLD

FAMILY HOME - BIG BLOCK - HUGE POOL - READY TO MOVE STRAIGHT IN!!

Is this the biggest private pool you have ever seen? We sure think it is!

This 3 bedroom (plus study/parents retreat), 1 bathroom home has been freshly painted and carpeted in neutral decor - ready for you to move straight in. The bathroom is newly renovated along with a separate toilet and laundry. The kitchen is large with plentiful storage and bench space.

The 1161m² block is in an elevated position overlooking neighboring parklands and only 1.2 klms to the Windaroo Gold Club.

The rear of the property consists of a covered alfresco area, seamlessly bringing the outdoors in. The pool, fire pit and entertaining area need to be seen to be believed - ready for entertaining all year long!

Side access, double lockable carport, and plenty of room for the boat, caravan and cars off road.

Location is key with this property. Windaroo is on the Brisbane/Gold Coast Corridor - approx 30 minutes commute either way to the Brisbane CBD or the Gold Coast beaches. There are private and public schools in the area. Public transport is very handy for those wanting to commute - express services to the Gold Coast and Brisbane are available regularly. For golfing enthusiasts - your only a swing away from the Windaroo Lakes Golf Course.

Features:

- * Quality Family Home
- * 3 generous bedrooms with built in robes
- * Parents retreat/study off main bedroom
- * freshly renovated bathroom with modern decor
- * Large living area
- * Tiled dining area
- * Large kitchen with plentiful storage
- * Ceiling Fans

3 BED | 1 BATH | 2 CAR

PRICE:
\$699,000

OPEN FOR INSPECTION:
N/A



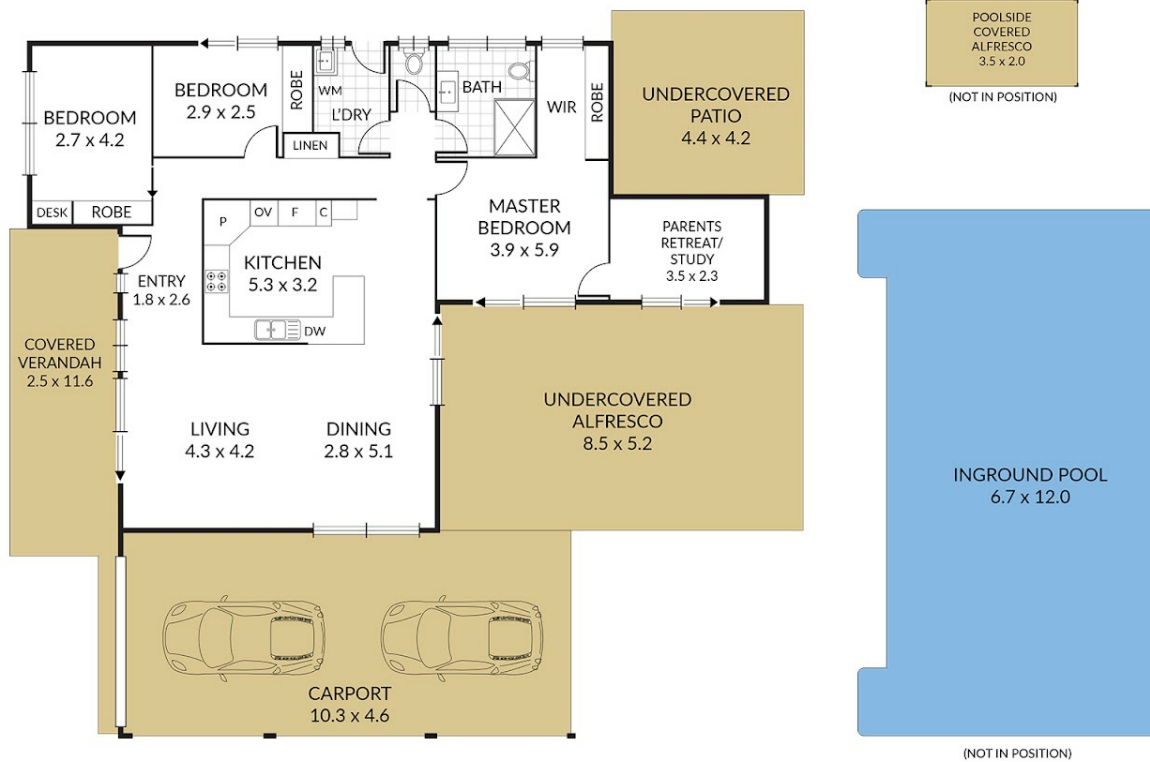
Stephen Cook
0466845145
stevecook@atrealty.com.au
www.atrealty.com.au

Internal 188m² External 170m² Total 358m²

57 Carl Heck Boulevard, **Windaroo**



3 x 1 x 2 x



NOTE: Every precaution has been taken to verify the accuracy of the above details. However, prospective purchasers are advised to make their own enquiries.

Disclaimer: Please note this floor plan is for marketing purposes and is to be used as a guide only. All dimensions are estimates only and may not be exact measurements.

Stephen Cook
0466845145
stevecook@atrealty.com.au
www.atrealty.com.au

