



SOLD

UNDER CONTRACT VACANT POSSESSION - PERFECT NORTH/EAST ASPECT - BEAUTIFUL WIDE VIEWS TO THE BROADWATER & POOL

This contemporary & spacious corner apartment is located on the 2nd floor. Wrap around windows on 3 sides makes this apartment, both light & bright. Floor-to-ceiling windows in the large living and dining area lead directly out to North/East facing wrap-around balcony with stunning views of the Broadwater. Glass balustrades maintain the views while the louvered stacking doors give the owners year round use of this great entertaining space while still providing plenty of privacy and protection from the elements.

This apartment is the very essence of waterfront Gold Coast living, only metres to the Broadwater. This boutique building of only 57 apartments has been built to the highest standards

- 99m2 internal plus 33m2 balcony - Total 133m2 living space.
- Master bedroom - large mirrored wardrobe & private North facing balcony.
- Large second bedroom - full wall of mirrored wardrobes.
- Generous & bright en-suite with twin basins, big shower & windows for lots of natural light and ventilation.
- Bedroom 3 - could be used as a study or MPR
- Fully equipped kitchen - quality stainless steel appliances, stone benches & mains gas cooking.
- Spacious open plan living area with Carrara tiled floors
- Ducted personal control air-conditioning
- European laundry
- 2 secure, side-by-side basement parking spaces & separate visitor car parking
- Pet friendly building

Building Facilities include

- Fully equipped private gymnasium
- 25m lap and recreational pool
- Heated spa
- Outdoor poolside BBQ & entertainment terrace

3 BED | 2 BATH | 2 CAR

PRICE:
\$985,000

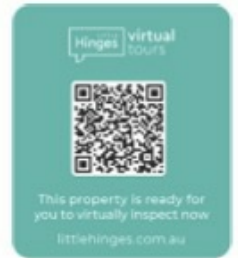
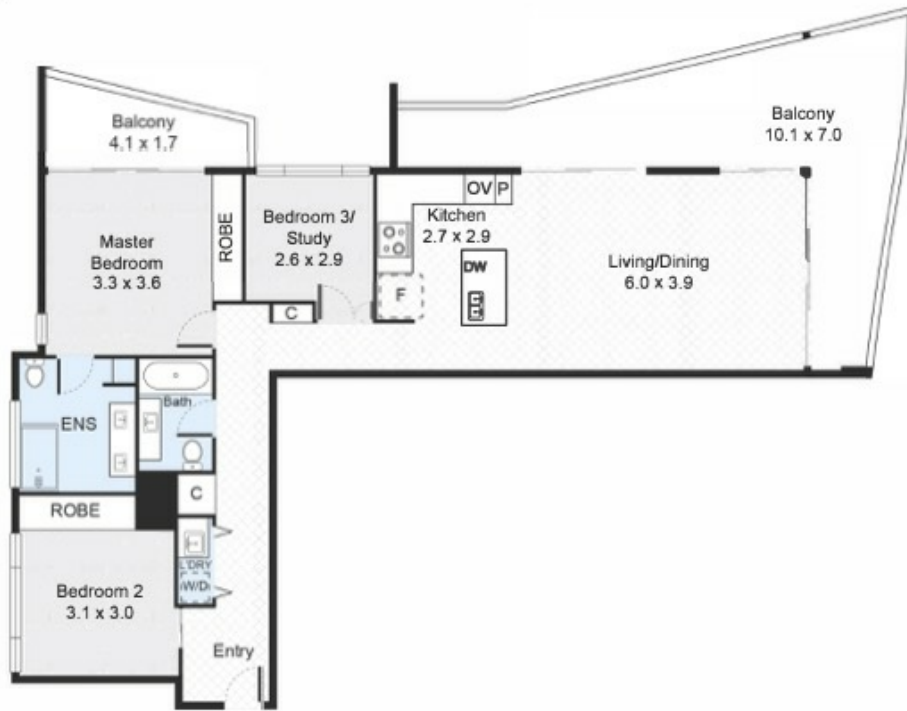
OPEN FOR INSPECTION:
N/A



Francine Setchell
0408143464
francine@atrealty.com.au
www.atrealty.com.au

Unit 1202, 438 Marine Parade, Biggera Waters

3 Bed 2 Bath



FLOOR PLAN



All information contained herein is gathered from our 3D scanned tours via Matterport. Whilst the 3D scanning technology is very accurate we cannot guarantee its accuracy and interested parties should rely on their own enquiries.

Disclaimer: Please note this floor plan is for marketing purposes and is to be used as a guide only. All dimensions are estimates only and may not be exact measurements.

Francine Setchell
0408143464
francine@atrealty.com.au
www.atrealty.com.au

