



FOR SALE

TIME TO RELAX AND PUT YOUR FEET UP

- * SOLID STONE HOME WITH TILE ROOF AND ADJOINING 2 CAR GARAGE
- * DELIGHTFULLY REFRESHED AND BACK FOR A NEW LIFE
- * LARGE BEDROOMS ARE A FEATURE WITH POTENTIAL TO RECONFIGURE LOUNGE INTO A THIRD
- * KITCHEN DINING/FAMILY ROOM BRIGHT AND SUNNY WITH WOOD HEATER FOR THOSE COLDER MOMENTS
- * ONLY MINUTES FROM THE RIVER, THE HISTORIC LOCAL HOTEL AND WHAT THE LOWER GLENELG NATIONAL PARK HAS TO OFFER
- * BLOCK SIZE 661m²
- * FOR YOUR PRIVATE INSPECTION CONTACT GARRY HARDY 0488 055 924 in conjunction with Allen Smith Arealty

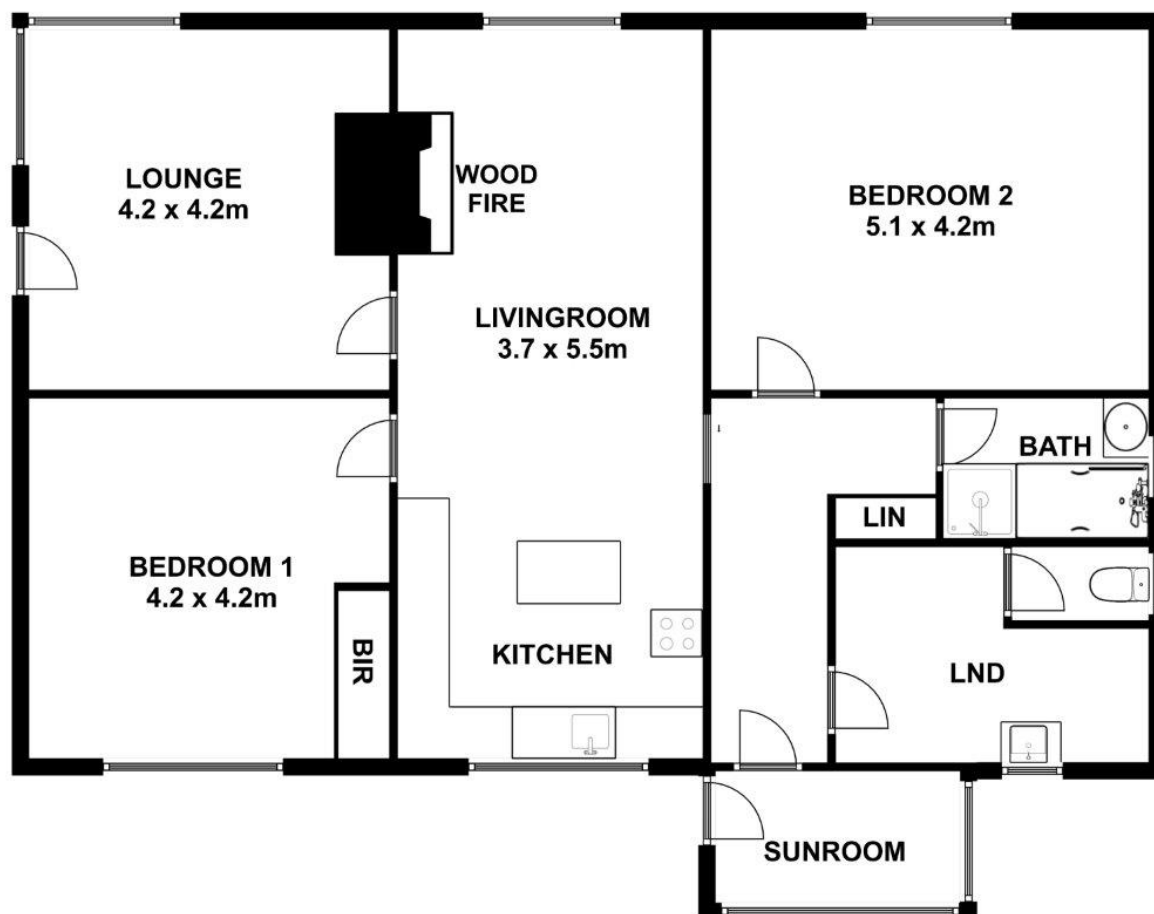
2 BED | 1 BATH | 2 CAR

PRICE:
\$400,000

OPEN FOR INSPECTION:
N/A



Allen Smith
0419869854
allen.smith@atrealty.com.au
www.atrealty.com.au
RLA: 269823



This drawing is for illustration purpose only. All measurements are approximate only and information intended to be relied upon should be independently verified.

Disclaimer: Please note this floor plan is for marketing purposes and is to be used as a guide only. All dimensions are estimates only and may not be exact measurements.