



# FOR SALE

**SOLD BY JAMES THOMPSON 0429 157157 &  
LEANNE HURLEY 0417 655002**

Situated within the highly sought after and prestigious Robin Hill Estate, this luxury family home offers great space and stunning vistas.

The home benefits from a fabulous expansive open plan layout with easy indoor-outdoor flow and multiple living spaces. The central gourmet kitchen benefits from top of the range appliances, separate oven and steamer, gas cooktop plus electric, dishwasher and large pantry, Turkish marble 40 mil benches and large island bench. The large informal living space flows effortlessly through the stacker doors to the excellent wrap-around tiled alfresco space overlooking the horse arena and stables and enjoying the stunning elevated views back to Bathurst and to the mountains.

The master suite features a walk-through wardrobe, spacious fully fitted en-suite. The additional bedrooms are well appointed and extremely spacious, all with fitted robes and study desks.

On an easy and low maintenance level 4.1 acre block you can enjoy stunning mountain vistas from all of your outdoor alfresco areas. This is a perfect home for those seeking a luxury escape in an ultra-convenient location.

Features Include but not limited to:

**BASEMENT LEVEL:**

\* Games/bar area, with theatre room

**FIRST FLOOR:**

\* Entry foyer

\* Few steps down to 3 spacious bedrooms, stylish main bathroom, spacious laundry, huge sports/gym room with stacker doors to the ground level alfresco area with BBQ, huge games/theatre room also with stacker doors to the alfresco area.

**7 BED | 4 BATH | 4 CAR**

**PRICE:**

**\$1,800,000 - \$1,950,000**

**OPEN FOR INSPECTION:**

**N/A**



**Toni and James Thompson**

**0429157157**

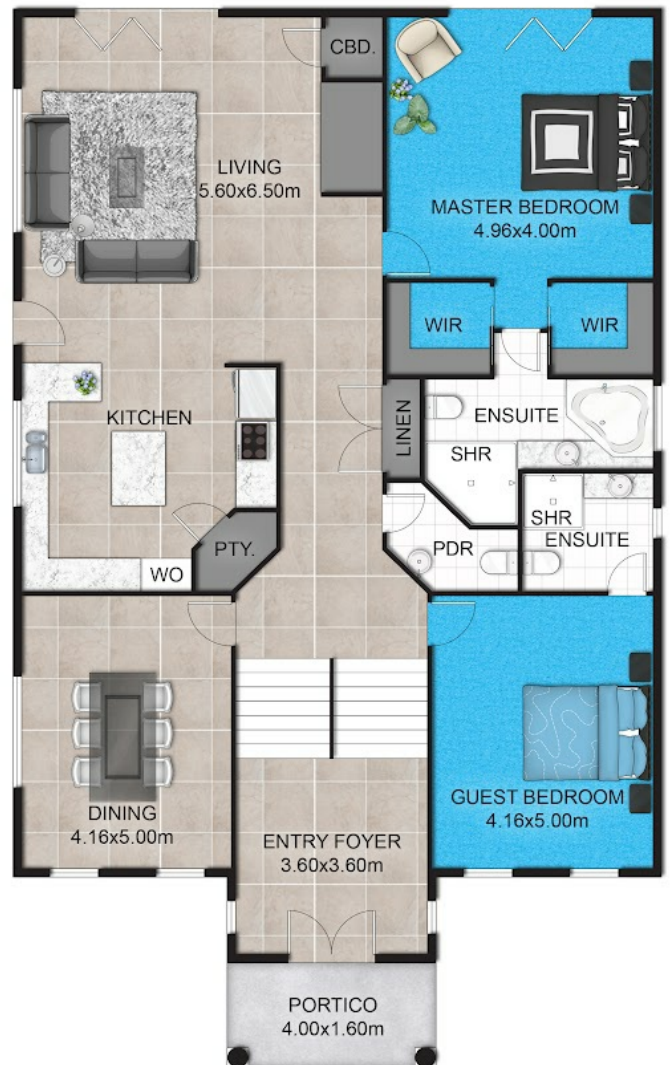
thompson@atrealty.com.au

[www.atrealty.com.au](http://www.atrealty.com.au)





**GROUND FLOOR PLAN**



**FIRST FLOOR PLAN**

Disclaimer: Please note this floor plan is for marketing purposes and is to be used as a guide only. All dimensions are estimates only and may not be exact measurements.

This floor plan including furniture, fixture measurements and dimensions are approximate and for illustrative purposes only.  
 @Realty gives no guarantee, warranty or representation as to the accuracy and layout.  
 All enquiries must be directed to the agent, vendor or party representing this floor plan.