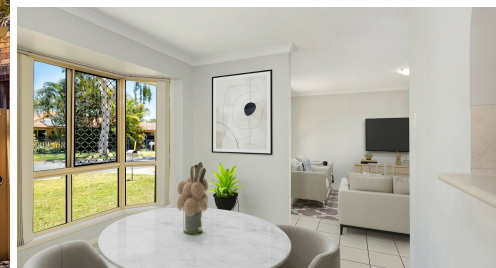


16 DIALBA CRESCENT TINGALPA



FOR SALE

ENTRY LEVEL PRICE. MUST BE SOLD. OPEN HOME CANCELLED!

Ready to enjoy with scope to add some modern upgrades if desired, it is a perfect opportunity for professionals, investors and first home-buyers alike looking to enter the market. Conveniently placed just moments to Tingalpa's local shops, amenities and a number of schools.

- Well-presented clean and neat interiors
- Dedicated kitchen with tiled splashback, gas cooking, ample bench space
- Tile floor living and carpeted bedrooms
- Spacious open plan living with defined functional dining area
- Neat bathroom featuring separate bath/shower
- Three great size bedrooms, both carpeted and with sliding robes
- Laundry with separate toilet
- Ceiling fans and air con to living area
- Security screens and vertical blinds
- Single lock up garage, access through to rear yard
- Excellent opportunity to enter the property market or add to your portfolio
- Fully fenced low maintenance flat yard
- Easy access to M1 with buses and trains providing an easy work commute

3 BED | 1 BATH | 1 CAR

PRICE:
\$650K plus

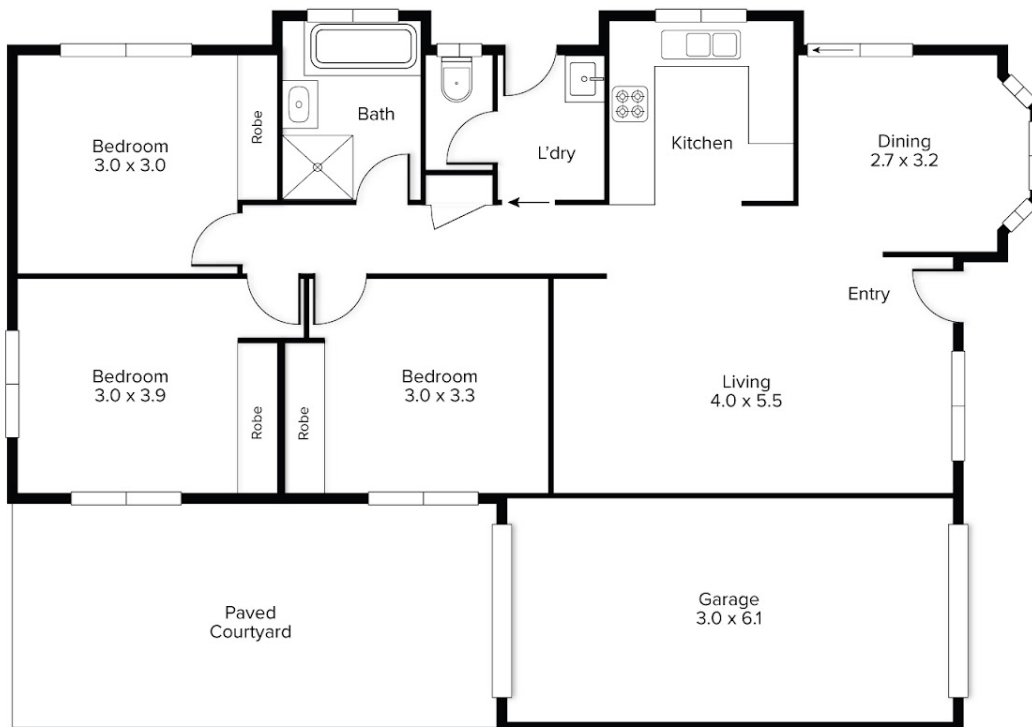
OPEN FOR INSPECTION:
N/A



Angela Cholakos
0414866770
angelacholakos@atrealty.com.au
www.atrealty.com.au

16 Dialba Crescent, Tingalpa

 x 3  x 1  x 1



Internal: 82m²
Garage: 18m²
Total: 100m²

Conditions of use: All floor plan measurements, positions and angles are approximate and for illustrative purposes only. Hausable makes no guarantee as to the accuracy of any measurements, symbols or textures as the intent of this floor plan is to indicate the approximate layout of the property only, and must not be relied upon for any other purpose, whatsoever. While every attempt at accuracy is made, potential buyers must seek their own independent professional measurements to determine the homes suitability before purchase. Hausable accepts no responsibility or liability for any loss, however arising, from the use of this floorplan. This floor plan must not be reused, or resold for any reason without prior written consent from Hausable Pty Ltd.

Disclaimer: Please note this floor plan is for marketing purposes and is to be used as a guide only. All dimensions are estimates only and may not be exact measurements.