

4/1 CALABRO WAY BURLEIGH HEADS



FOR LEASE

WAREHOUSE STUDIO/ COMMERCIAL KITCHEN SPACES IN BURLEIGH! 119 SQM

Trendy and Fresh "Calabro Way Warehouse Spaces" are ideally situated in Burleigh Gardens Industrial Estate, on the corner of Calabro and Ern Harley Drive in a prominent elevated location with a nice Northern aspect with easy access to the M1 and centrally located.

Architecturally designed, these spaces offer an ideal opportunity to showcase your business ..

Lease Term 3 years
Options 3 years
Rental \$250 psm plus outgoings plus GST
Outgoings \$ 68 psm plus GST

The premise is food equipped with grease trap, gas to premise.

0 BED | 0 BATH | 0 CAR

PRICE:

\$0

OPEN FOR INSPECTION:

N/A

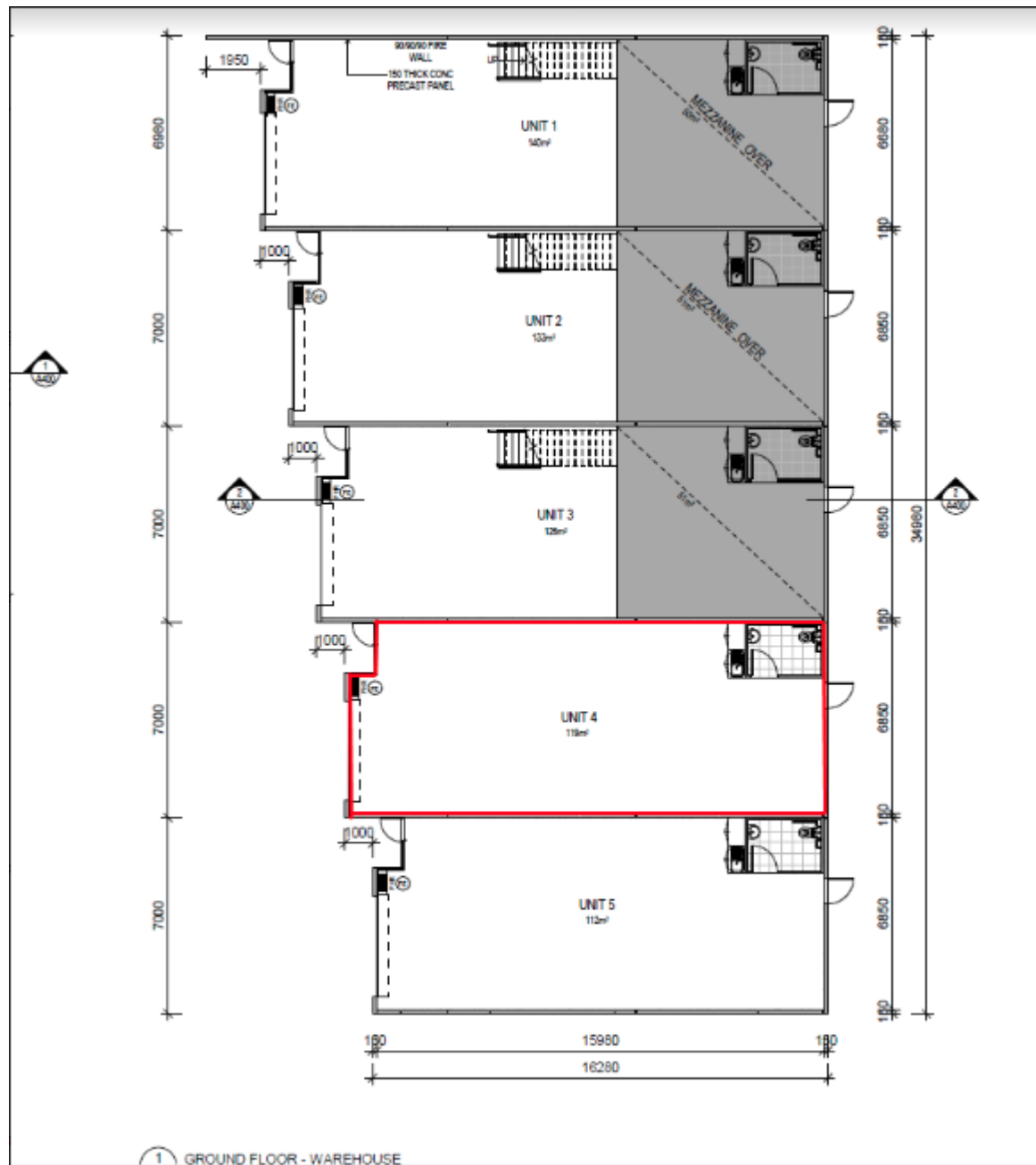


@realty National Head Office

1300299377

headofficerentals@atrealty.com.au

www.atrealty.com.au



Disclaimer: Please note this floor plan is for marketing purposes and is to be used as a guide only. All dimensions are estimates only and may not be exact measurements.