



SOLD

START LIVING YOUR DREAM!!

This beautifully presented 4 bedroom home is not one to be missed. Situated in the heart of Pittsworth on a large 1295m2 block, it is within a short 5 minute walk to local primary schools and shops. The town of Pittsworth is located in the heart of the Darling Downs in a rural community surrounded by various agricultural industries. It is approximately 40km west of Toowoomba, with a daily bus run that travels to schools and shopping centres. The town is within a 2-3 hour drive to Brisbane, the Sunshine Coast and the Gold Coast.

This home has been recently renovated with a spacious downstairs kitchen, dining and living area and stylish bathroom. This very low maintenance home boasts four bedrooms with built-ins, upstairs tv room and an open plan sunroom room that could be used as an office or sitting room. The newly renovated kitchen has ample storage and bench space, a large fridge/freezer compartment and a dishwasher. The updated bathroom is stunning, featuring a separate shower and bathtub and a very stylish vanity with a tiled floor. If you enjoy entertaining, you will love the dining area at the rear of the house, which has sliding door access to the enormous backyard. There is a 3.52kw solar system on the house with eight solar panels, which will save your electricity bill. This large block has a colourbond fence on three sides with an outdoor spa, children's cubby house and a double lock-up colorbond garage.

Features include:

- Fully Screened
- Rainwater tank
- New bathroom
- Separate Laundry
- Established Gardens
- 3.52kw solar system
- Two car colorbond garage
- Reverse cycle air conditioner
- Interconnecting smoke alarms
- Modern kitchen with dishwasher
- 4 generous bedrooms with built-in wardrobes
- Main bathroom with separate bathtub and shower

This home is empty and ready to be lived in with no work to be done. If you are looking for a spacious country home in the heart of the Darling downs, this is the one for you.

4 BED | 1 BATH | 2 CAR

PRICE:
\$383,000

OPEN FOR INSPECTION:
N/A



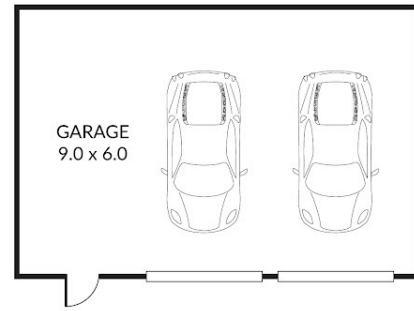
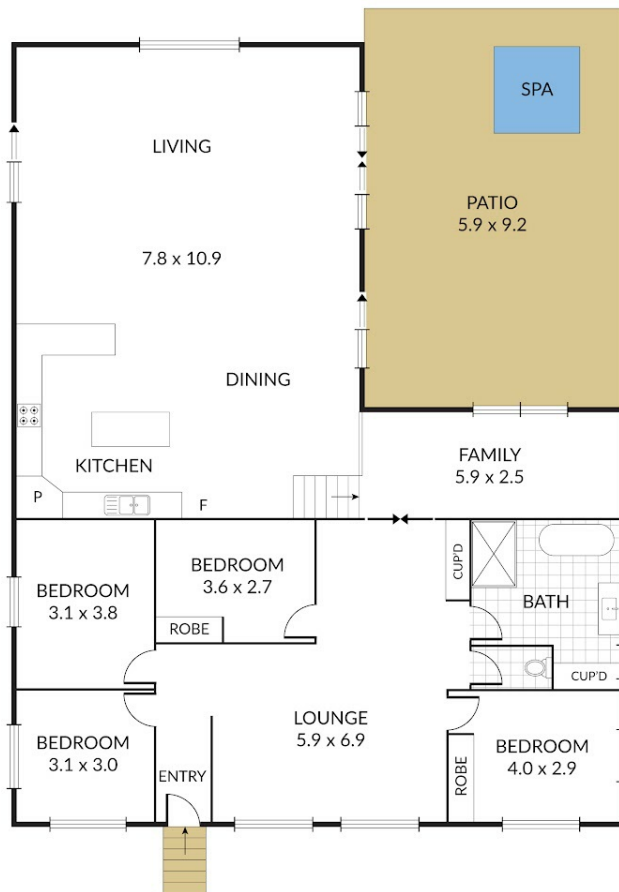
Robert Cox
0422841777
robertcox@atrealty.com.au
Tyme Real Estate

Internal 245m² External 54m² Total 299m²

6 Thomas Street, **Pittsworth**



4 x 1 x 2 x



NOTE: Every precaution has been taken to verify the accuracy of the above details. However, prospective purchasers are advised to make their own enquiries.

Disclaimer: Please note this floor plan is for marketing purposes and is to be used as a guide only. All dimensions are estimates only and may not be exact measurements.

Robert Cox
0422841777
robertcox@atrealty.com.au
Tyme Real Estate

