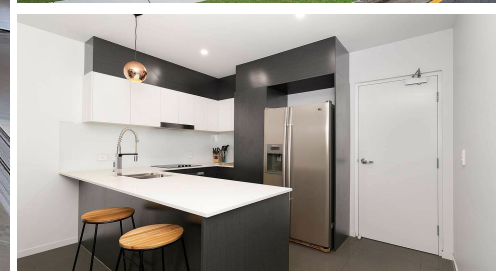
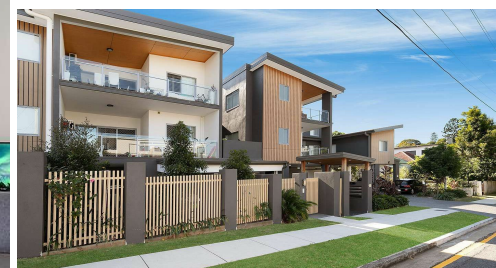
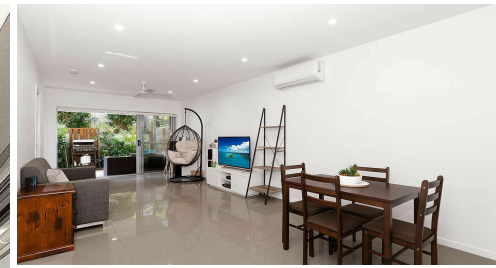


9/16 SELBORNE STREET, MOUNT GRAVATT EAST, QLD, 4122



SOLD

BIGGER THAN THE REST, QUIETER THAN THE REST: BEST APARTMENT IN THE BLOCK. OWNER HAD FIRST CHOICE AND PICKED THE BEST ONE!

Ready Set Enjoyment & Convenience! Secure Modern Courtyard Apartment
An exceptional apartment offering a spacious, modern home or outstanding investment opportunity in the inner south's leading trending restaurant and coffee precinct. This stylish apartment is in a quiet, tucked away and leafy street with excellent public transport a short stroll on Logan Road. With lift access from the basement carpark this townhouse like apartment on the end of the complex has only one neighbour and ideal if you wish to avoid stairs completely. The development was crafted by a renown, local developer who has created quality living with an exceptional standard of finish and build. You will enjoy a spacious entertainment terrace and wrap around courtyard with room for your own garden, or immerse yourself in Mt Gravatt & Stones Corner's many village vibrant food experiences, brewhouses and social waterholes where you too will know the convenience of inner-city Brisbane living. Just 4 kms or 30min public transport ride to Griffith University, Nathan Campus it is a great rental property if your circumstance change in the future.

500m walk to the massive Mt Gravatt Shopping Centre
Brisbane City 10km
4 kms to Griffith University Nathan Campus & QEII Hospital
Many quality private & public schools surround
Metres to Logan Road multiple transport options &
Greenslopes & Mansfield Village life buzz & dining precincts
5 km to Greenslopes Private Hospital
10 km to Brisbane City
23 mins drive to the Brisbane airport.
Pets accepted upon Body Corporate approval
Rent appraisal \$540- \$560/week
Rates \$430/ qtr
Low Body Corp \$833/qtr (\$3,332/ year)

2 BED | 2 BATH | 1 CAR

PRICE:
\$525,000

OPEN FOR INSPECTION:
N/A



Kim Martin
0414341063
kimmartinproperty@atrealty.com.au
www.atrealty.com.au

9-16 Selborne Street



Approximate Gross Internal Area
72.1 sq m / 776 sq ft
External Area = 33.6 sqm / 362 sq ft

Disclaimer: Please note this floor plan is for marketing purposes and is to be used as a guide only. All dimensions are estimates only and may not be exact measurements.