



FOR SALE

LARGE RED BRICK COLONIAL STYLE HOME.

With a bull nose front, this red brick colonial-style home oozes character and charm. Offering 3 large bedrooms plus a 4th bed/study, nearly 3 meter high ceilings, large lounge room, generous dining and huge kitchen which opens up to a covered outdoor entertaining area, a fully fenced block and the added bonus of a large three-car carport, this exceptional home is well sought after by both families and tenants alike.

The added bonuses include air conditioning and a park with a playground and bike track on the opposite side of the road. This means the property has limited neighbors with great street appeal on a large corner block.

Plenty of room for improvement and the opportunity to add value with Logan City Council zoning for attached or detached secondary dwellings, with the room to do it.

Located on the border of Crestmead and Heritage Park this area has been booming recently and the vacancy rate nearly sits at zero with occupancy at 100%. Best suited to large families or work-from-home requirements. Is also an absolute dream home for pets.

Inspections are a must call Mark on 0417199875

More benefits to this family home!
4 good size bedrooms main with en-suite
Large lounge with A/C and carpet,
kitchen/dining combined
bathroom with walk-in shower
Covered entertainment area
3 car carport garage with toilet and
Separate laundry

Fenced 650 m2 Block with garden shed
Close to schools, local shops, and public transport.
Please call Mark Perera for further information on 0417199875

Disclaimer: The information provided has been obtained in good faith and is to be used as a guide only. @realty nor the acting agent/s provide any guarantees, undertakings or warnings as to the accuracy, completeness or up-to-date nature of the information provided by the Vendor or

4 BED | 2 BATH | 3 CAR

PRICE:

Expressions of interest

OPEN FOR INSPECTION:

N/A

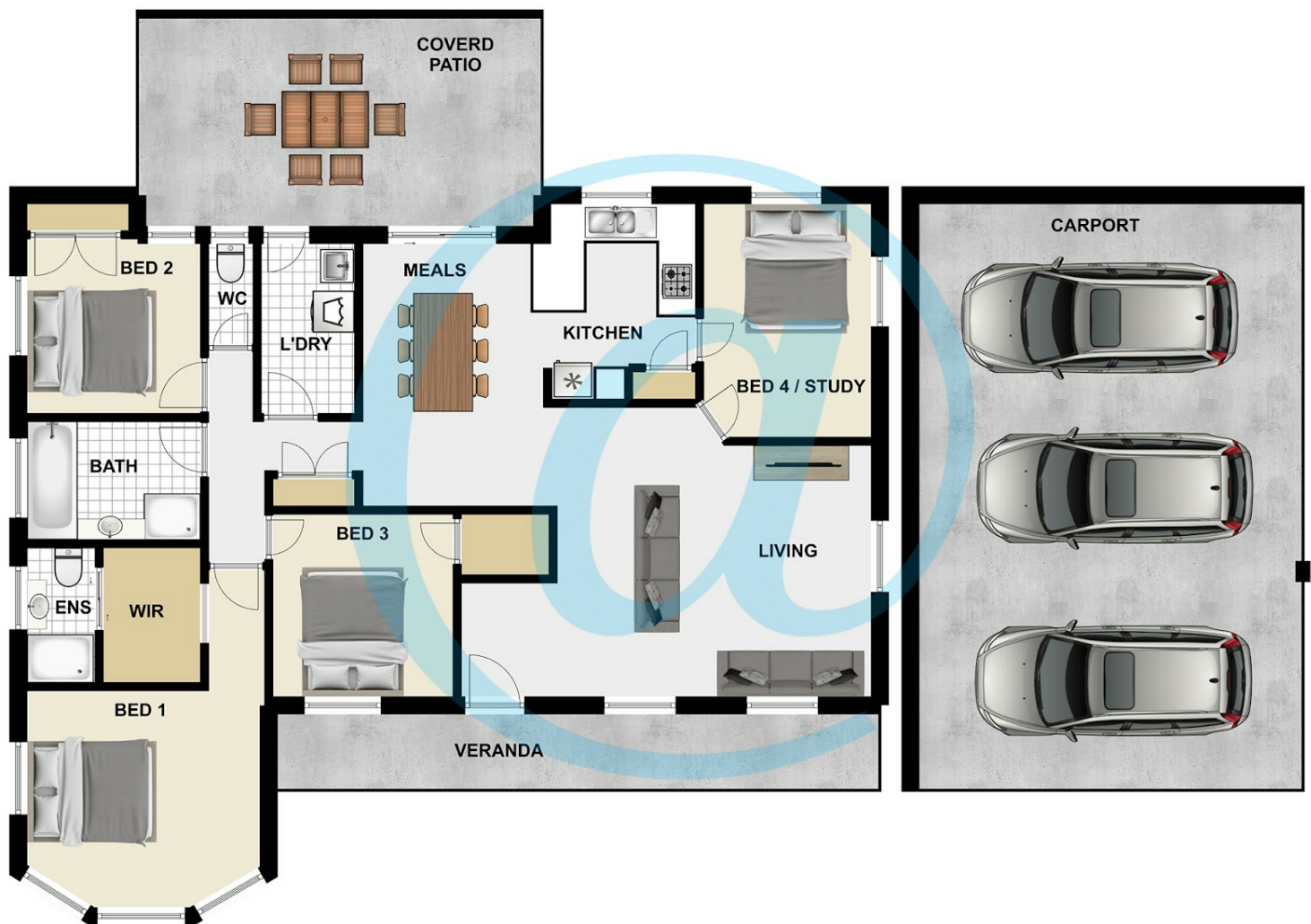


Mark Perera

0417199875

markperera@atrealty.com.au

www.atrealty.com.au



Disclaimer: Please note this floor plan is for marketing purposes and is to be used as a guide only. All dimensions are estimates only and may not be exact measurements.