



FOR SALE

REDUCED!!! LEVEL LIVING, CLOSE TO TOWN

Located in a quiet cul-de-sac close to town and surrounded by other quality homes, this lovely four-bedroom home is well worth an inspection.

Constructed of brick and tile, this home offers style and easy care all on a large level block.

The open plan design incorporates a modern and spacious kitchen with dishwasher, quality appliances and a large walk-in pantry with direct access to the private, covered rear entertaining area featuring beautiful flagstone paving.

Plenty of space around the hub of the kitchen for dining, lounge and living areas...

This excellent floor plan situates 3 of the bedrooms at the front of the home with a large family bathroom and separate toilet.

The master bedroom is private and at the rear of the home with a huge walk-in robe and ensuite.

A very private rear yard that is fully fenced and landscaped – plenty of room for children and/or pets.

So many features to this lovely home including reverse cycle air-conditioning, wood fire, double lock up garage with one remote door and internal access.

Call Narelle Harper 0435 054 625 or Craig Bellamy 0412 080 287 for you private inspection today!

We make no representation or warranty as the accuracy, reliability or completeness of the information relating to the property. Some information has been obtained from third parties and has not been independently verified. Accordingly, no warranty, representation or undertaking, whether express or implied, is made and no responsibility is accepted by us as to the accuracy of any part of this, or any further information supplied by or on behalf our behalf, whether orally or in writing.

NOTE: we are a local Nambucca Valley Real Estate that has its Head Office in Sydney.

4 BED | 2 BATH | 2 CAR

PRICE:
\$750,000

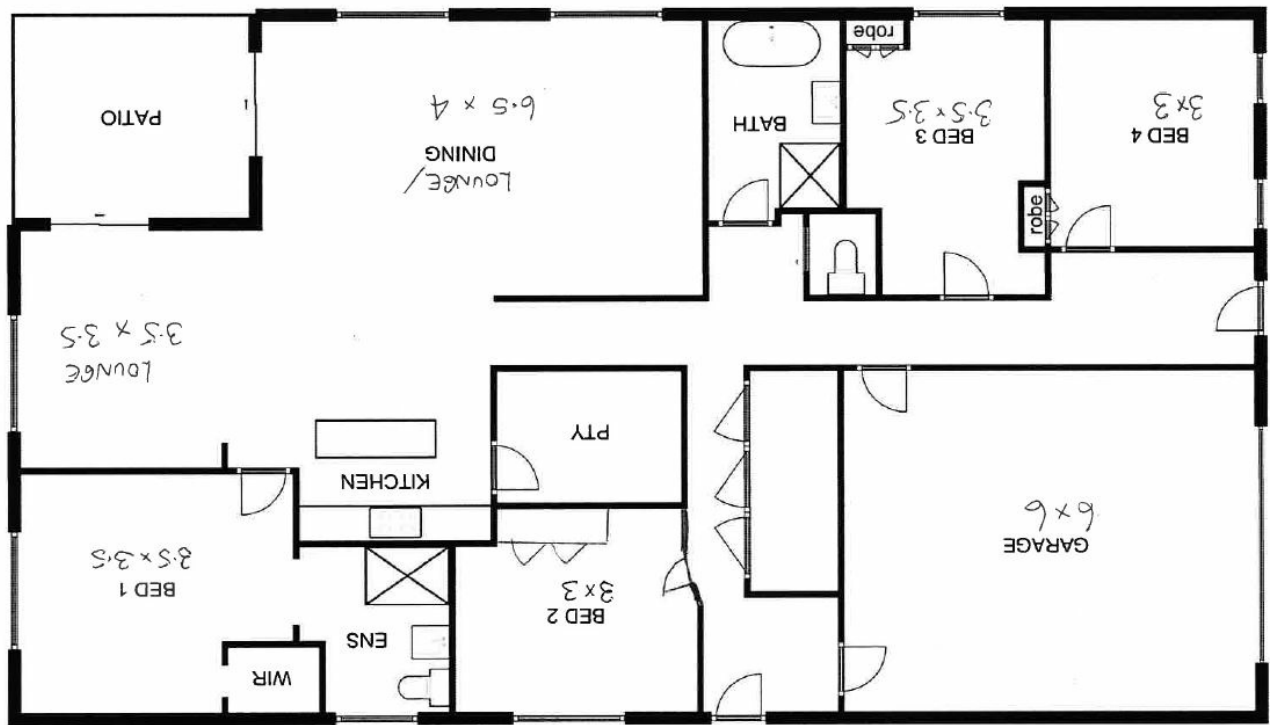
OPEN FOR INSPECTION:
N/A



Narelle Harper
0435054625
narelleharper@atrealty.com.au
www.atrealty.com.au

20 THORNBILL GLEN, NAMBUCCA HEADS

This floor plan is not to scale. Areas and dimensions are approximate and therefore plan should only be used for illustrative purposes.



Disclaimer: Please note this floor plan is for marketing purposes and is to be used as a guide only. All dimensions are estimates only and may not be exact measurements.