

FOR SALE

IMMACULATE 5-YEAR-OLD CONTEMPORARY STROUD HOME ON A FLAT USABLE 1997M² BLOCK IN A SOUGHT-AFTER ACREAGE AREA.

Save yourself the time building a new home, this is a fabulous design and is perfect for the growing family.

This home has such a beautiful feel from the moment you step in inside with its easy flow design. The living/kitchen/dining areas are centrally located, separating the master bedroom from another wing consisting of 3 spacious bedrooms, main bathroom and separate toilet. The décor of the home is light and bright with clean lines enhanced by the beautiful oak floating timber flooring which flows seamlessly throughout and into the very well-appointed kitchen with all the modern day conveniences.

Large doors open out onto the spacious alfresco area, bringing the outside in and making it a great extra living space for entertaining whilst looking over your very spacious flat, usable block. There is also plenty of room for the kids to run and play.

The design of this home is perfect for the growing family or with a bit of ingenuity, turn the home into dual living by closing off either end from one another with a communal living/kitchen/dining area in the middle. The options are endless!

Let's not forget the large 12m x 9m shed with power connected and a partially built room inside. This is the perfect workshop, storage area or just a fun place to tinker around in. Everyone loves a shed!

This property is sure to impress the most fastidious buyer and is located on beautiful Lahey Road, surrounded by other high end acreage properties.

INTERNAL

- Open plan living/Kitchen/Dining area
- Separate living area
- Separate media room
- Oak timber floating flooring throughout
- High ceilings
- Master bedroom with spacious built-in wardrobe
- Ensuite with twin vanities and separate toilet
- Spacious 2nd, 3rd and 4th bedrooms with large built-in wardrobes.

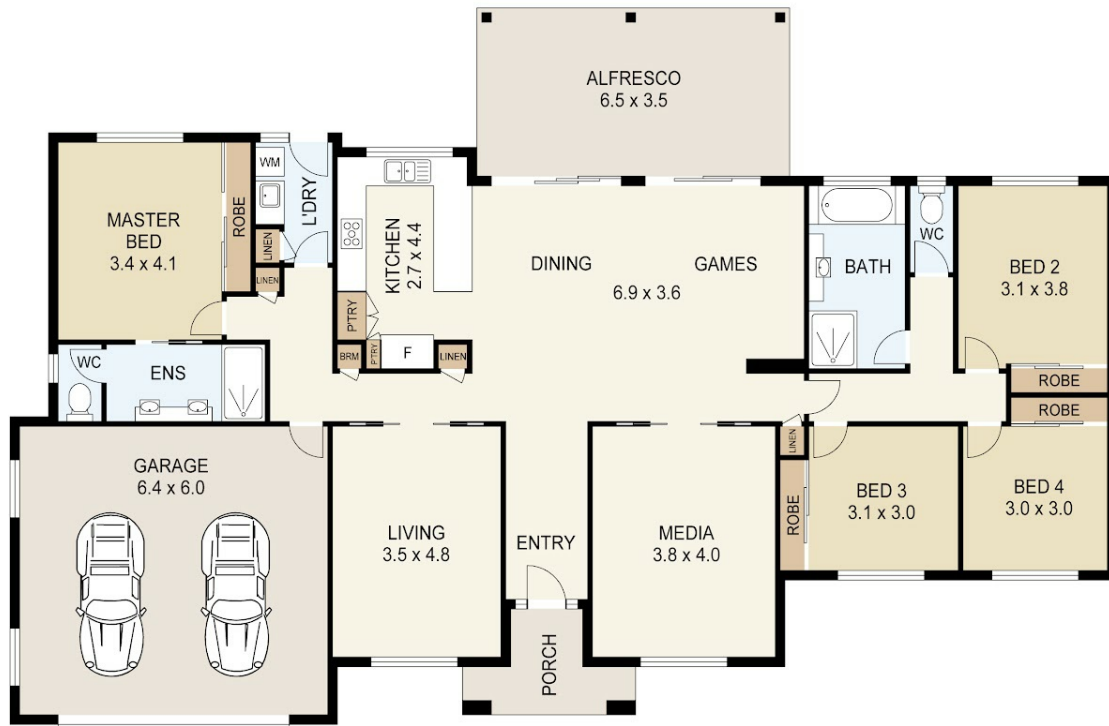
4 BED | 2 BATH | 2 CAR

PRICE:
\$1,250,000

OPEN FOR INSPECTION:
N/A



Karin Smith
0403012639
karin.smith@atrealty.com.au
www.atrealty.com.au



Floor Plan

62 LAHEY ROAD, TAMBORINE MOUNTAIN

0m 1m 2m 3m 4m 5m

SCALE UNIT IS IN METRES

All measurements are approximate and for illustration purposes only. It should not be considered 100% accurate. Interested parties should rely on their own enquiries.

Disclaimer: Please note this floor plan is for marketing purposes and is to be used as a guide only. All dimensions are estimates only and may not be exact measurements.