

1141 MOUNT MEE ROAD, MOUNT MEE, QLD, 4521



SOLD

FRESH AIR RURAL RETREAT

Situated in Mount Mee, an hour north of Brisbane and moments from the beautiful D'Aguiar National Park, this wonderful and unique family home has been much loved by its current owners for more than 20 years. Set back from the road and afforded extra privacy by fencing and hedges, you'll love the peace and quiet on offer in this laid-back locale.

The ground floor living, dining, and family spaces offer large, open rooms with neutral décor, plenty of natural light, and practical flooring that is easy to maintain. Double doors from the dining room and family room flow out to the patio, ideal for outdoor dining or entertaining friends. The huge kitchen is appointed with a double oven, gas cooking, a dishwasher, and copious cabinets and shelving. Enjoy it as it is or bring it up to date to create a space that is truly your own.

Accommodation comprises three generously sized bedrooms on the upper level, all with gleaming wooden floors and lots of light. The home is serviced by a bathroom on each level.

This property is situated on an expansive block, offering a tremendous amount of outdoor space. Children and pets will love having a safe and quiet space to play outdoors. The grassed yard is level and well-maintained, and large enough to add a pool if you wish.

Other notable features of this home include:

- Upstairs sunroom with storage space
- Covered carport for two vehicles
- Garden shed
- Internal laundry on the lower level
- 2 x 30,000L water tanks and septic sewer system

A tiny town with its population in the hundreds, Mount Mee is a beautiful rural location with a climate to rival the Blue Mountains of NSW. You'll be surrounded by incredible scenery and moments from trails, mountains, and fabulous green spaces. For families with children, the small and friendly Mount Mee State School serves the town. You will also be not far to the main road, connecting you to the city and any amenities you may need in nearby towns.

A dream location for those looking to get away from it all, a visit is highly recommended to fully appreciate this quirky home and its lovely location.

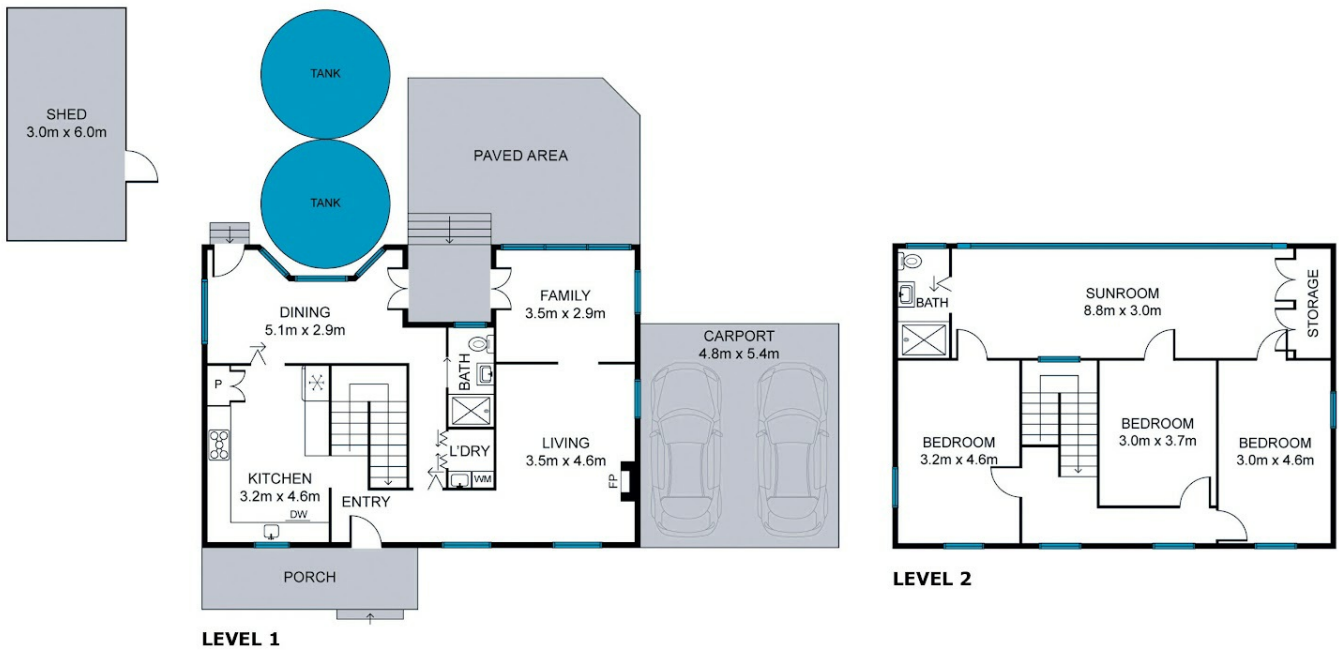
3 BED | 2 BATH | 2 CAR

PRICE:
\$530,000

OPEN FOR INSPECTION:
N/A



Ziggy Bale
0438782882
ziggybale@atrealty.com.au
www.atrealty.com.au



Whilst every attempt has been made to ensure the accuracy of the floor plan contained here, measurements of doors, windows and rooms are approximate and no responsibility is taken for any error, omission or mis-statement. These plans are for representation purposes only.

INTERNAL: 158m² | EXTERNAL: 80m² | TOTAL: 238m²

Disclaimer: Please note this floor plan is for marketing purposes and is to be used as a guide only. All dimensions are estimates only and may not be exact measurements.