

SOLD

ON THE FRONT DIRECTLY OPPOSITE MOOLOOLABA BEACH

Opportunity should be knocking loudly for this 4th level two bedroom apartment right on the front of the popular 'Landmark' building, ideally located right opposite the 'flags' on Mooloolaba's main beach. These north east facing two bedroom apartments in the building are very tightly held, offering full 180 degree views of the ocean, beach & coastline north to Noosa & directly across the bay to Pt. Cartwright. With the council's multi-million dollar complete revitalisation of Mooloolaba's foreshore currently underway coupled with the apartment's realistic pricing & surprisingly moderate body corporate fees, you should be tempted to act fast.

- * Fully furnished North-east facing 2 Bedroom Ensuite Apartment.
- * Absolute 'unbuildoutable' Views of the Ocean, Beach & Waves.
- * Prime Location Directly Opposite Mooloolaba Beach
- * Low Body Corporate & Solid Financials
- * Fantastic Facilities incl. Rock Pool & Spa, Fully Equipped Gymnasium & BBQ Rooftop Area

Contact Michael anytime to arrange a private inspection.

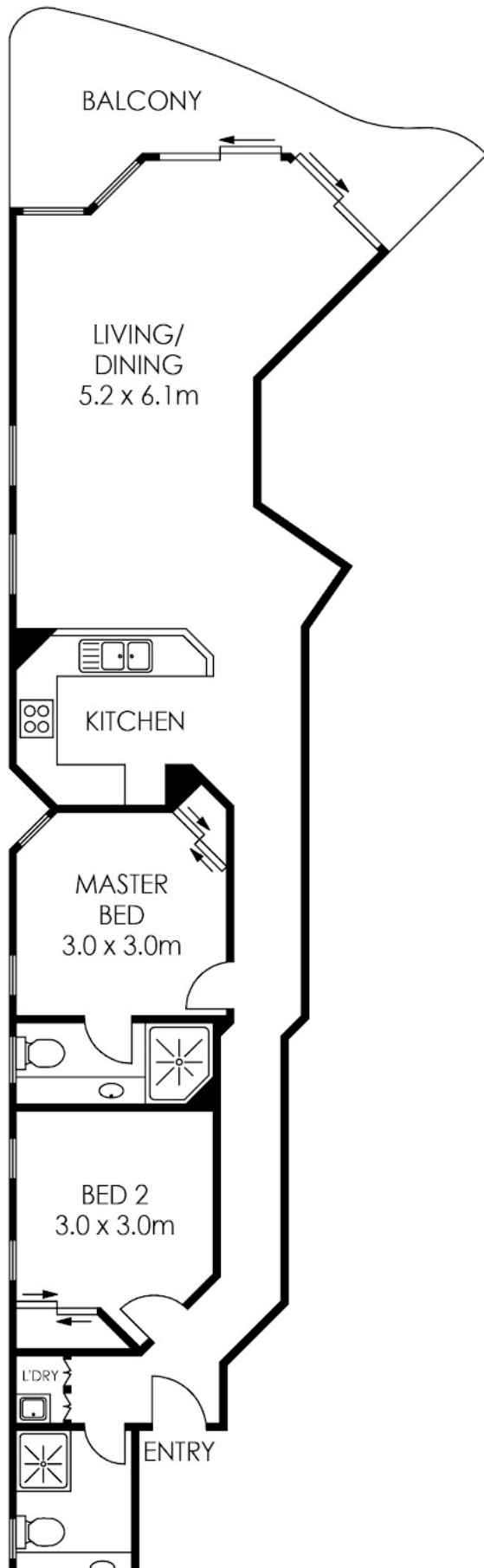
2 BED | 2 BATH | 1 CAR

PRICE:
\$1,200,000

OPEN FOR INSPECTION:
N/A



Michael Cornilsen
0414233026
michaelc@atrealty.com.au
www.atrealty.com.au



Disclaimer: Please note this floor plan is for marketing purposes and is to be used as a guide only. All dimensions are estimates only and may not be exact measurements.

ARTIST IMPRESSION ONLY: While every attempt has been made to ensure the accuracy of this floor plan's areas and measurements of doors, windows, rooms and all other items are approximate and no responsibility is taken for any inaccuracy or omission. This plan is for illustrative purposes only and should only be used as such by any prospective purchaser. www.fratterphoto.com

Michael Cornilsen
0414233026

michaelc@atrealty.com.au

www.atrealty.com.au

INTERNAL : 77m²
EXTERNAL : 30m²
TOTAL : 107m²

