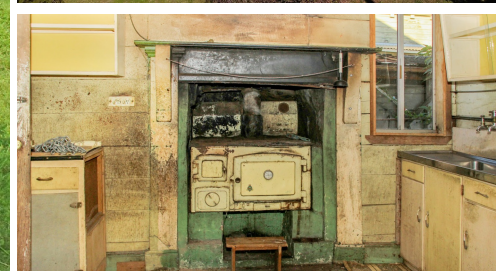


31 BUNDOCK STREET, KYOGLE, NSW, 2474



SOLD

ORIGINAL RED CEDAR COTTAGE

This 3-bedroom dwelling is believed to contain the only known physical remnants of the former 1860s Kyogle Homestead settlement (previously known as Fairy Mount). The homestead remnant is associated with the historic development of Kyogle and was one of the first five stations in the Kyogle area. This cottage is noted in history as being part of that original homestead.

The cottage sits on an approximately 764msq block with back access from Bundock Street, and is set on Homestead Hill with beautiful views looking to the north of Kyogle.

Some of the originals of this home include –

Original brick chimney and stove.

Red Cedar frame

Red Cedar internal lining boards in most rooms

Veranda with timber shingle roofing covered with iron

Concrete wash tubs

Timber buildings of this age are very rare in Kyogle and have significant Heritage value. If you are looking for your own piece of Kyogle history you are invited to come along and view this property.

Phone Lynda – 0497 395 093 or David – 0428 322 517 lifetime locals to the area.

Disclaimer: The above information has not been verified. We advise you to confirm the accuracy of details before entering into a contract. Croker Realty cannot be held responsible for any inaccurate details supplied here. Buyer/s must do their own due diligence regarding drawings, floor plans, council approval and measurements etc. these have not been verified by Croker Realty

3 BED | 2 BATH | 1 CAR

PRICE:
\$240,000

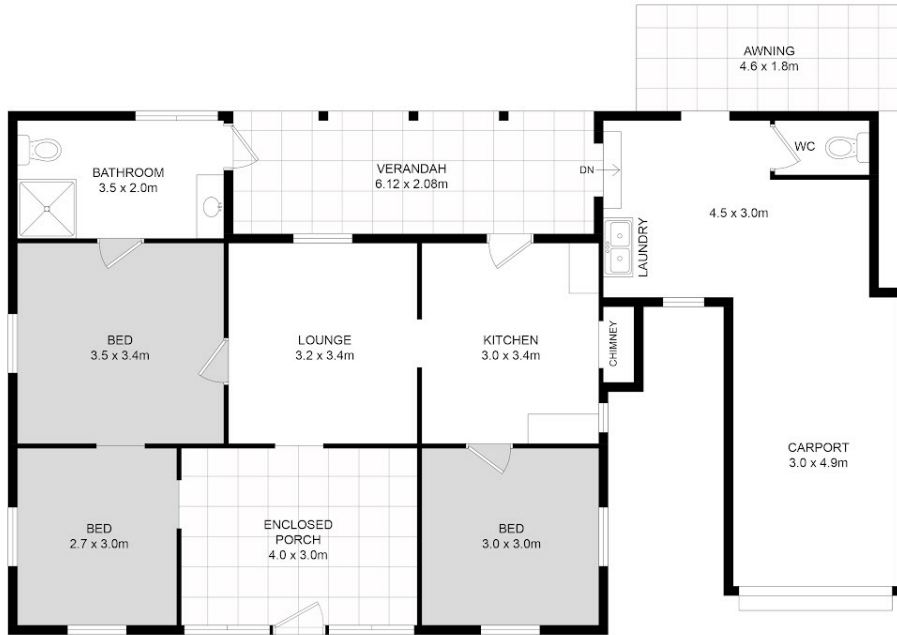
OPEN FOR INSPECTION:
N/A



Lynda Croker
0497395093

lyndacroker@atrealty.com.au

Croker Realty



FLOOR PLAN

This floor plan including furniture, fixture measurements and dimensions are approximate and for illustrative purposes only. BoxBrownie.com gives no guarantee, warranty or representation as to the accuracy and layout. All enquiries must be directed to the agent, vendor or party representing this floor plan.



31 Bundock St, Kyogle 2474

Disclaimer: Please note this floor plan is for marketing purposes and is to be used as a guide only. All dimensions are estimates only and may not be exact measurements.